

# CERTIFICATE OF LOCATION OF GOVERNMENT CORNER

SOUTH QUARTER Corner of Section 35, Township 41, Range 22, 4TH P.M.

STATE OF MINNESOTA, County of KANABEC

At the corner location shown on the sketch:

In March 2005 found this monument and established G.P.S. coordinates on the position.

Kanabec County U.S. Survey Feet Coordinates  
NAD 1983, HARN 1996 Adjustment  
Obtained by RTK GPS Observation

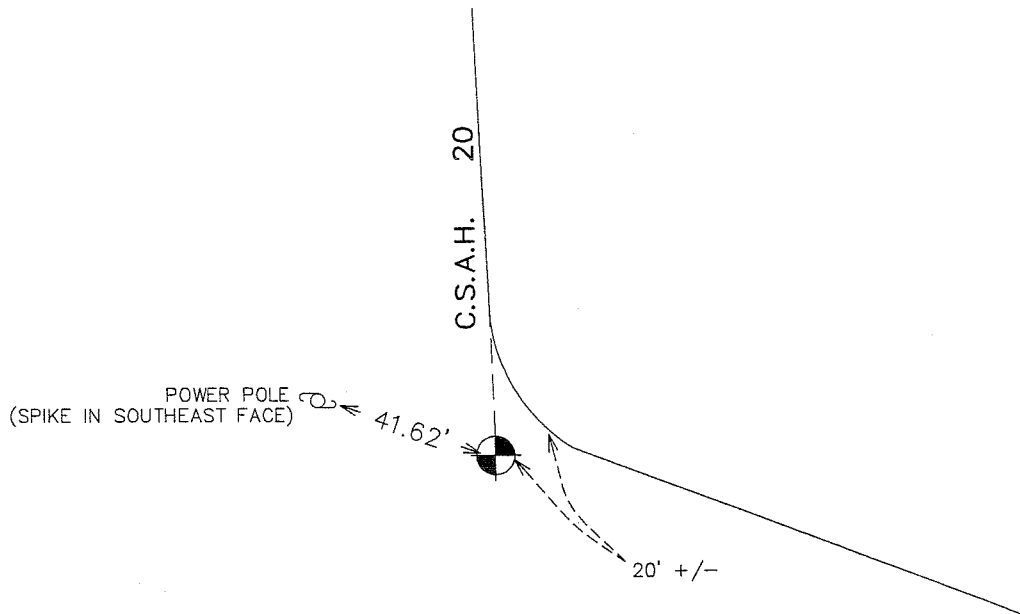
Northing= 191665.71

Easting= 452513.58

Note: NAD 1983, HARN 1996 Adjustment  
coordinates are NOT compatible with  
NAD 1983 coordinates

Note: 1 Meter=3937/1200 U.S. Survey Feet

## SKETCH OF REFERENCE TIES FROM TIE SHEET 743



Statement of evidence relative to this corner location is on back of page.

I hereby certify that this document and the data contained herein was prepared by me or under my direct supervision.

Ernest Blud  
Signature

1-23-2006  
Date

Registration No. Minn No 9808

Land Surveyor,  Professional Engineer  
 County Surveyor,  County Engineer

## OFFICE OF THE COUNTY RECORDER

County of \_\_\_\_\_

I hereby certify that this document was filed in the County Recorder's office at \_\_\_\_\_ M. on the

\_\_\_\_\_ day of \_\_\_\_\_ A.D., 20\_\_

County Recorder \_\_\_\_\_

BY \_\_\_\_\_ Deputy

DOCUMENT NO. \_\_\_\_\_

**STATEMENT OF EVIDENCE**

ALL OF THE ORIGINAL BEARING TREES ARE NOW GONE.

THERE IS NO RESURVEY DATA ON FILE FOR THIS CORNER.

THERE IS AN EXISTING COUNTY HIGHWAY ALONG THE NORTH-SOUTH QUARTER LINE OF SECTION 35, TOWNSHIP 41, RANGE 22.

IN JANUARY OF 1986, M.B. RUDE RAN A SURVEY ALONG THE TOWNSHIP LINE TO LOCATE THE EXISTING MONUMENTS, LINES OF OCCUPATION AND TO SEARCH THE AREA.

NO EXCAVATION WAS MADE AT THIS CORNER BECAUSE IT FALLS ON THE SHOULDER OF THE ROAD AND ALL EVIDENCE WAS DESTROYED IN CONSTRUCTION.

M.B. RUDE ACCEPTED THE CENTER LINE OF THE COUNTY HIGHWAY NORTH EXTENDED SOUTH AS THE PERPETUATED EAST-WEST LOCATION AND SET THIS CORNER ON A LINE BETWEEN THE SOUTHEAST CORNER OF SECTION 31 TOWNSHIP 41, RANGE 21, AND THE SOUTHEAST CORNER OF SECTION 33, TOWNSHIP 41 RANGE 22.

IN MARCH 2005 E.G. RUD AND SONS FOUND THIS MONUMENT AND ESTABLISHED G.P.S. COORDINATES ON THIS POSITION USING G.P.S. EQUIPMENT.