

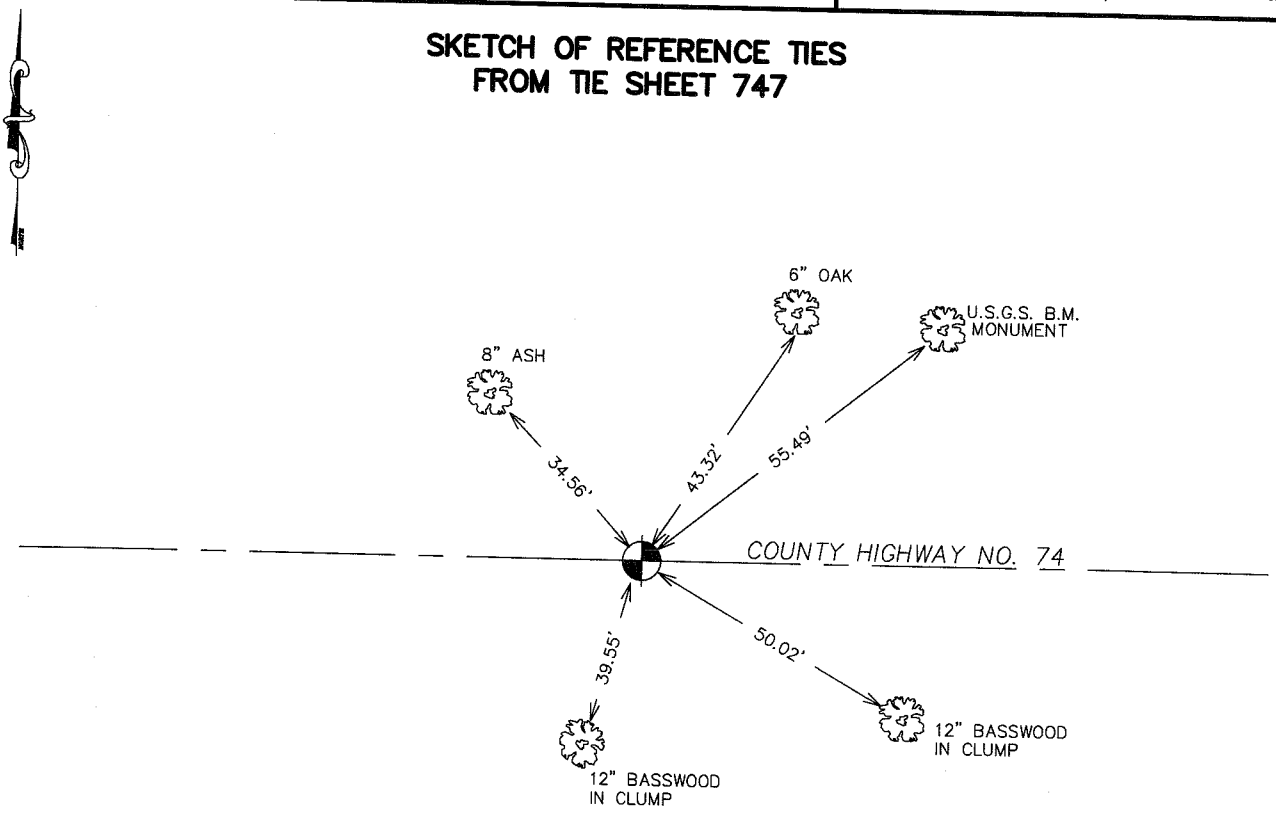
# CERTIFICATE OF LOCATION OF GOVERNMENT CORNER

SOUTH QUARTER Corner of Section 33, Township 41, Range 22, 4TH P.M.  
STATE OF MINNESOTA, County of KANABEC

At the corner location shown on the sketch:  
In March 2005 found this monument  
and established G.P.S. coordinates on the position.

Kanabec County U.S. Survey Feet Coordinates  
NAD 1983, HARN 1996 Adjustment  
Obtained by RTK GPS Observation  
Northing= 191629.42  
Easting= 441944.56  
Note: NAD 1983, HARN 1996 Adjustment  
coordinates are NOT compatible with  
NAD 1983 coordinates  
Note: 1 Meter=3937/1200 U.S. Survey Feet

## SKETCH OF REFERENCE TIES FROM TIE SHEET 747



TIES ARE TO SPIKE IN  
BLAZE IN NEAR FACE

Statement of evidence relative to this corner location is on back of page.

I hereby certify that this document and the data  
contained herein was prepared by me or under  
my direct supervision.

Ernest J. Rub 11-15-05  
Signature Date

Registration No. Minn No 9808

Land Surveyor,  Professional Engineer  
 County Surveyor,  County Engineer

### OFFICE OF THE COUNTY RECORDER

County of \_\_\_\_\_

I hereby certify that this document was filed in  
the County Recorder's office at \_\_\_\_\_ M. on the  
\_\_\_\_\_ day of \_\_\_\_\_ A.D., 20\_\_\_\_

County Recorder \_\_\_\_\_  
BY \_\_\_\_\_ Deputy

DOCUMENT NO. \_\_\_\_\_

**STATEMENT OF EVIDENCE**

**ALL OF THE ORIGINAL BEARING TREES ARE NOW GONE.**

**THERE IS A TOWN ROAD ORDER ON FILE DATED DECEMBER 1910, SURVEYED BY S.P. MARLETTE, THAT ESTABLISHES A TOWN ROAD ALONG THE TOWNSHIP LINE FROM THE SOUTHWEST CORNER OF SECTION 32, TOWNSHIP 41, RANGE 22, TO THE NORTHEAST CORNER OF SECTION 6, TOWNSHIP 40, RANGE 22.**

**IN JANUARY 1986, M.B. RUDE RAN A SURVEY ALONG THE TOWNSHIP LINE TO LOCATE THE EXISTING LINES OF OCCUPATION AND TO SEARCH THE AREA.**

**THERE IS AN EXISTING COUNTY ROAD ALONG THE SOUTH LINE OF SECTION 33.**

**IN JUNE OF 1986, AN EXCAVATION WAS MADE WITH THE BACKHOE AT THE PROPORTIONAL MEASUREMENT LOCATION FOR THIS CORNER. NO EVIDENCE WAS FOUND IN THE EXCAVATION.**

**THIS CORNER WAS SET ON LINE AND PROPORTIONAL MEASUREMENT BETWEEN THE SOUTHWEST AND SOUTHEAST CORNERS OF SECTION 33, TOWNSHIP 41 RANGE 22.**

**IN MARCH 2005 E.G. RUD AND SONS FOUND THIS MONUMENT AND ESTABLISHED KANABEC COUNTY COORDINATES ON THIS POSITION USING G.P.S. EQUIPMENT.**