

CERTIFICATE OF LOCATION OF GOVERNMENT CORNER

SOUTHEAST Corner of Section 32, Township 41, Range 22, 4TH P.M.

STATE OF MINNESOTA, County of KANABEC

At the corner location shown on the sketch:
In March 2005 found this monument
and established G.P.S. coordinates on the position.

Kanabec County U.S. Survey Feet Coordinates
NAD 1983, HARN 1996 Adjustment
Obtained by RTK GPS Observation

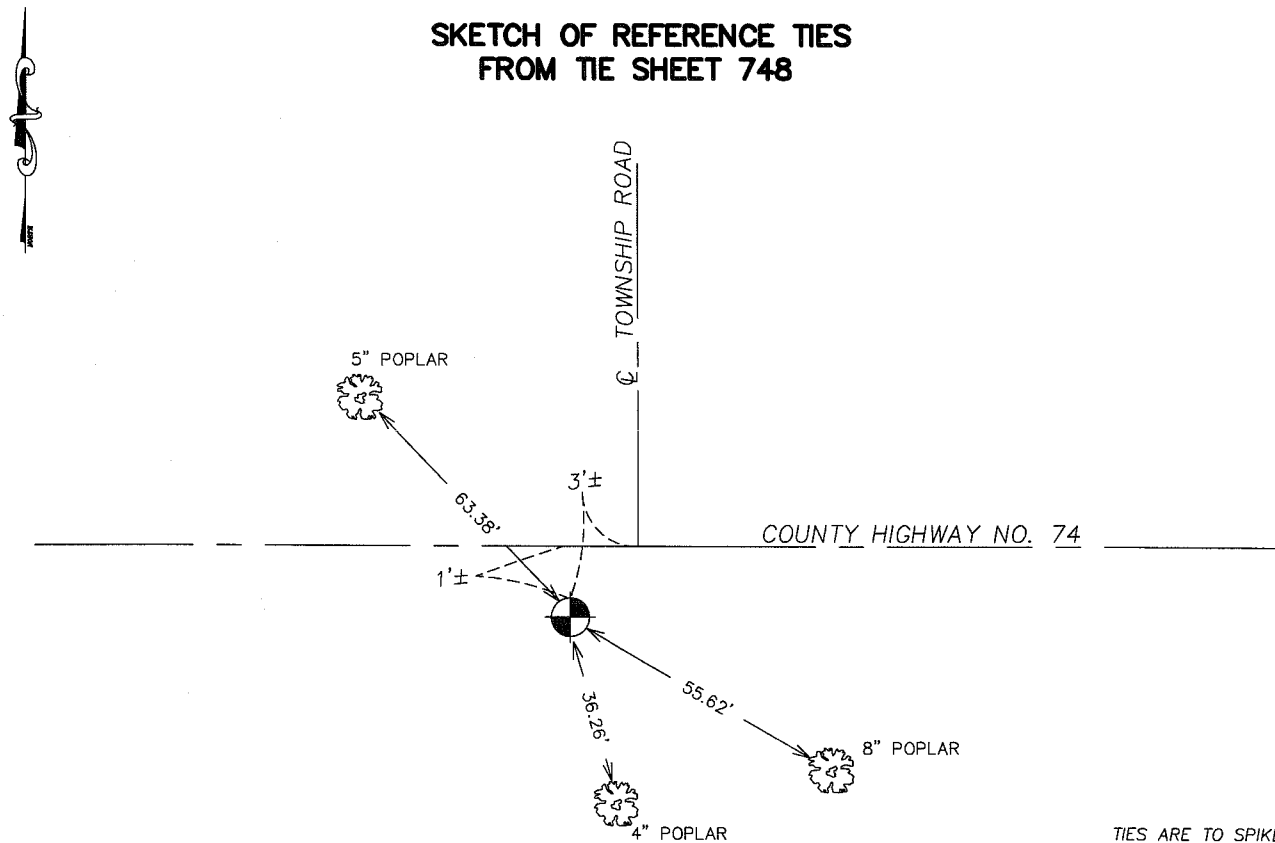
Northing= 191626.73

Easting= 439301.79

Note: NAD 1983, HARN 1996 Adjustment
coordinates are NOT compatible with
NAD 1983 coordinates

Note: 1 Meter=3937/1200 U.S. Survey Feet

SKETCH OF REFERENCE TIES FROM TIE SHEET 748



TIES ARE TO SPIKE IN
BLAZE IN NEAR FACE

Statement of evidence relative to this corner location is on back of page.

I hereby certify that this document and the data
contained herein was prepared by me or under
my direct supervision.

Ernst J. Rud 11-15-2005
Signature Date

Registration No. Minn No 9808

Land Surveyor, Professional Engineer

County Surveyor, County Engineer

OFFICE OF THE COUNTY RECORDER

County of _____

I hereby certify that this document was filed in
the County Recorder's office at _____ M. on the

_____ day of _____ A.D., 20__

County Recorder _____

BY _____ Deputy

DOCUMENT NO. _____

STATEMENT OF EVIDENCE

ALL OF THE ORIGINAL BEARING TREES ARE NOW GONE.

THERE IS A SURVEY BY JOHN BUCKLEY, DATED AUGUST 26, 1919, ON FILE IN KANABEC COUNTY THAT SHOWS A 5" BY 8" BY 14" SANDSTONE MARKED WITH A "+" WAS SET AT THIS CORNER.

IN NOVEMBER OF 1985, M.B. RUDE RAN A SURVEY ALONG THE SOUTH LINE OF TOWNSHIP 41, RANGE 22, TO LOCATE THE EXISTING MONUMENTS AND LINES OF OCCUPATION AND TO SEARCH THE AREA.

THIS CORNER FALLS IN THE INTERSECTION OF ROADS EAST-WEST AND NORTH.

ON NOVEMBER 14, 1985, AN EXCAVATION WAS MADE WITH THE BACKHOE AT THE CENTER LINE INTERSECTION LOCATION. BUCKLEY'S SANDSTONE MARKED WITH A "+" WAS FOUND IN THE EXCAVATION.

THE SANDSTONE WAS ACCEPTED AS THE PERPETUATED LOCATION OF THE ORIGINAL CORNER AND ON NOVEMBER 20, 1985, A 7/8" BY 24" CAPPED REBAR WAS SET TO MARK THE LOCATION.

IN MARCH 2005 E.G. RUD AND SONS FOUND THIS MONUMENT AND ESTABLISHED KANABEC COUNTY COORDINATES ON THIS POSITION USING G.P.S. EQUIPMENT.