

CERTIFICATE OF LOCATION OF GOVERNMENT CORNER

SOUTH QUARTER Corner of Section 32, Township 41, Range 22, 4TH P.M.

STATE OF MINNESOTA, County of KANABEC

At the corner location shown on the sketch:

SET #7 REBAR WITH ALUMINUM CAP
AND ESTABLISHED KANABEC COUNTY COORDINATES ON ITS LOCATION.

Kanabec County U.S. Survey Feet Coordinates
NAD 1983, HARN 1996 Adjustment
Obtained by RTK GPS Observation

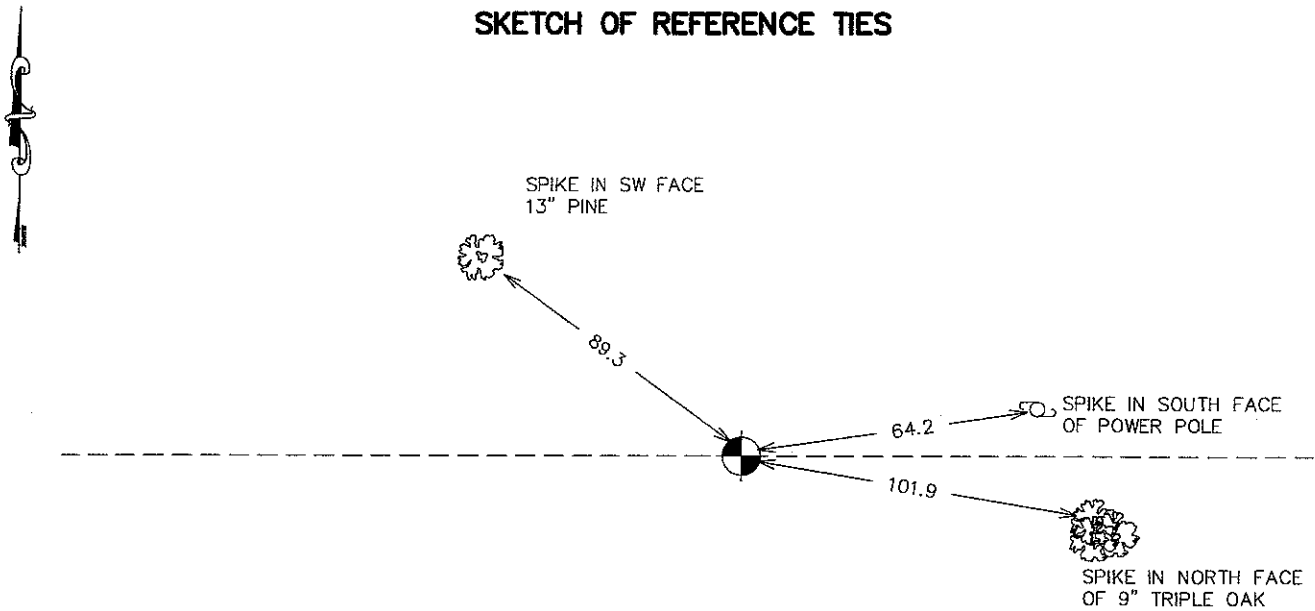
Northing= 191637.51

Easting= 436651.48

Note: NAD 1983, HARN 1996 Adjustment
coordinates are NOT compatible with
NAD 1983 coordinates

Note: 1 Meter=3937/1200 U.S. Survey Feet

SKETCH OF REFERENCE TIES



Statement of evidence relative to this corner location is on back of page.

I hereby certify that this document and the data contained herein was prepared by me or under my direct supervision.

Ernest Alred 8-15-07
Signature Date

Registration No. Minn No 9808

Land Surveyor, Professional Engineer

County Surveyor, County Engineer

OFFICE OF THE COUNTY RECORDER

County of _____

I hereby certify that this document was filed in the County Recorder's office at _____ M. on the _____ day of _____ A.D., 20____

County Recorder _____

BY _____ Deputy

DOCUMENT NO. _____

SOUTH QUARTER CORNER SECTION 32, T41, R22

STATEMENT OF EVIDENCE

THE ORIGINAL CORNER AND BEARING TREES NO LONGER REMAIN. RECORDS OF ANY SUBSEQUENT SURVEYS AT KANABEC COUNTY COULD NOT BE FOUND.

IN JUNE 2006 E.G. RUD MADE A SURVEY AROUND SECTIONS 1, 2, 11 AND 12 TO LOCATE EXISTING MONUMENTATION AND LINES OF OCCUPATION AND TO DETERMINE SEARCH AREAS. THIS CORNER FALLS ON THE CENTERLINE OF AN EAST-WEST TOWNSHIP ROAD. THERE IS A ROAD OPENING FILED AT KANABEC COUNTY AUDITORS OFFICE DATED DECEMBER 20, 1910 BUT NO RECORD OF A SURVEY COULD BE FOUND. THIS CORNER FALLS IN A CUT SECTION OF THE ROAD AND NO EXCAVATION WAS MADE.

A #7 REBAR WITH AN ALUMINUM CAP WAS SET, TIES TAKEN AND KANABEC COUNTY COORDINATES ESTABLISHED USING G.P.S. EQUIPMENT.

The monument was set on line between the NE corner of Sec 1, T40, R23 & the SW corne of Sec 32 at a proportional distance between the SW & SE cor of Sec 32.