

CERTIFICATE OF LOCATION OF GOVERNMENT CORNER

SOUTHEAST Corner of Section 31, Township 41, Range 22, 4TH P.M.
 STATE OF MINNESOTA, County of KANABEC

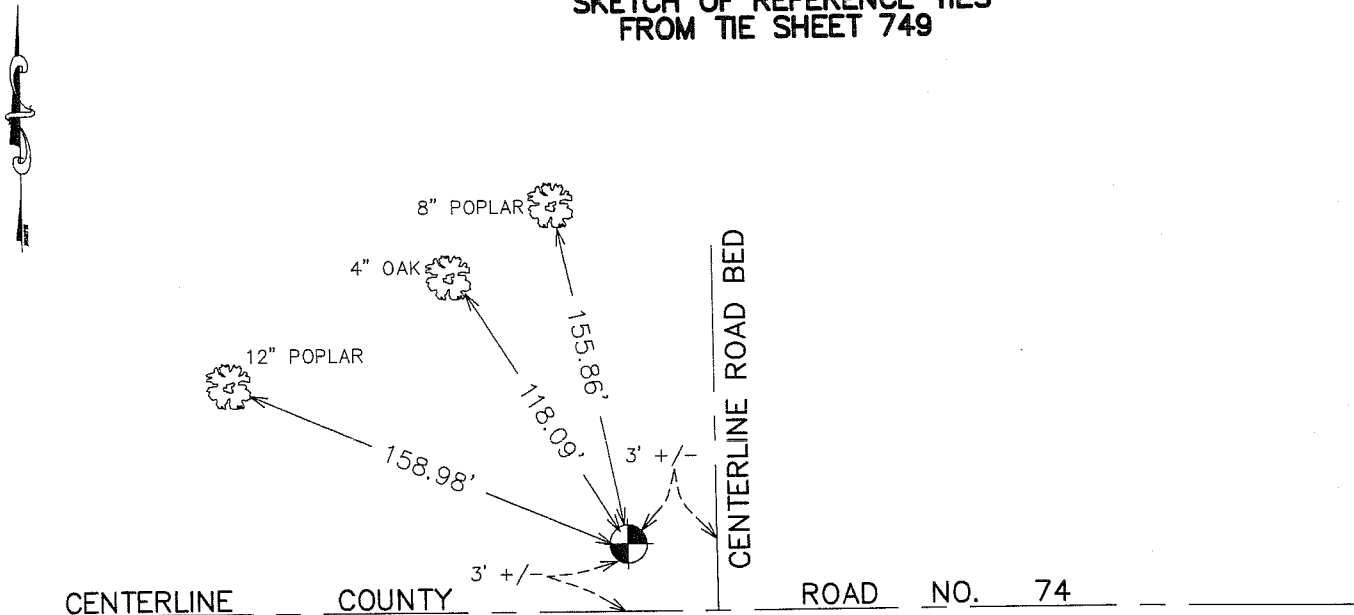
At the corner location shown on the sketch:
 In March 2005 found monument and established gps coordinates

Kanabec County U.S. Survey Feet Coordinates
 NAD 1983, HARN 1996 Adjustment
 Obtained by RTK GPS Observation

Northing= 191648.29
 Easting= 434001.17

Note: NAD 1983, HARN 1996 Adjustment
 coordinates are NOT compatible with
 NAD 1983 coordinates
 Note: 1 Meter=3937/1200 U.S. Survey Feet

SKETCH OF REFERENCE TIES FROM TIE SHEET 749



Statement of evidence relative to this corner location is on back of page.

I hereby certify that this document and the data
 contained herein was prepared by me or under
 my direct supervision.

Ernest Blud
 Signature

1-23-2006
 Date

Registration No. Minn No 9808

- Land Surveyor, Professional Engineer
 County Surveyor, County Engineer

OFFICE OF THE COUNTY RECORDER

County of _____

I hereby certify that this document was filed in
 the County Recorder's office at _____ M. on the
 _____ day of _____ A.D., 20 _____

County Recorder _____
 BY _____ Deputy

DOCUMENT NO. _____

STATEMENT OF EVIDENCE

ALL OF THE ORIGINAL BEARING TREES ARE NOW GONE.

THERE IS A SURVEY ON FILE IN KANABEC COUNTY BY JOHN BUCKLEY, DATED AUGUST 26, 1919, THAT SHOWS A 10" IRON CYLINDER WAS SET AT THIS CORNER.

IN NOVEMBER OF 1985, M.B. RUDE RAN A SURVEY ALONG THE SOUTH LINE OF TOWNSHIP 41, RANGE 22, TO LOCATE THE EXISTING MONUMENTS AND LINES OF OCCUPATION AND TO SEARCH THE AREA.

THIS CORNER FALLS IN AN EXISTING EAST-WEST ROAD AND THE INTERSECTION OF AN OLD ROAD BED NORTH.

ON NOVEMBER 14, 1985 M.B. RUDE MADE AN EXCAVATION ~~WAS MADE~~ WITH THE BACKHOE IN THE INTERSECTION LOCATION. A 10" BY 22" IRON CYLINDER WAS FOUND BELOW THE ROAD SURFACE.

ON NOVEMBER 20, 1985, A 7/8" BY 27" CAPPED REBAR WAS SET IN PLACE OF THE CYLINDER WHICH WAS ACCEPTED AS THE PERPETUATED LOCATION OF THE ORIGINAL CORNER.

IN MARCH 2005 E. G. RUD AND SONS FOUND THIS MONUMENT AND ESTABLISHED KANABEC COUNTY COORDINATES ON THIS POSITION USING G.P.S. EQUIPMENT.