

CERTIFICATE OF LOCATION OF GOVERNMENT CORNER

SOUTH QUARTER Corner of Section 31, Township 41, Range 22, 4TH P.M.

STATE OF MINNESOTA, County of KANABEC

At the corner location shown on the sketch:
In March 2005 found monument and established gps coordinates on.

Kanabec County U.S. Survey Feet Coordinates
NAD 1983, HARN 1996 Adjustment
Obtained by RTK GPS Observation

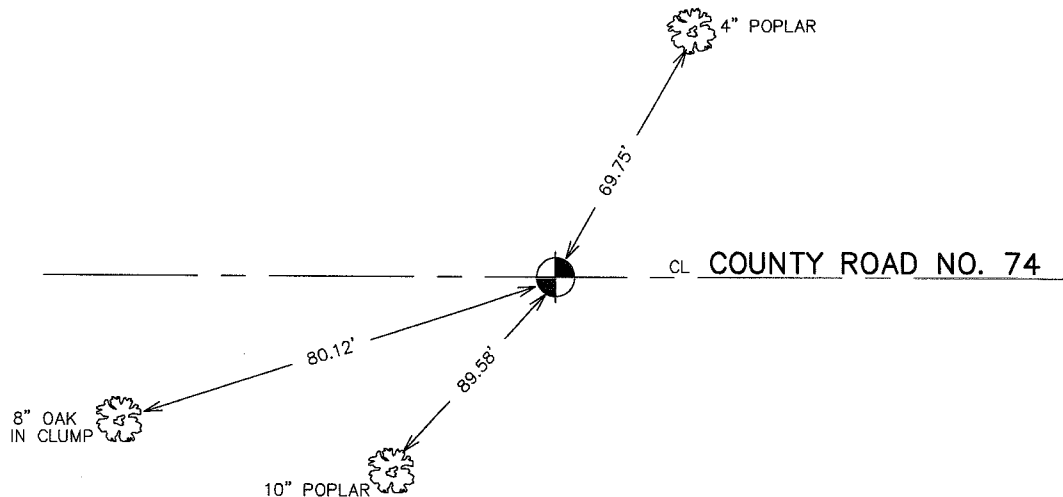
Northing= 191659.88

Easting= 431350.67

Note: NAD 1983, HARN 1996 Adjustment
coordinates are NOT compatible with
NAD 1983 coordinates

Note: 1 Meter=3937/1200 U.S. Survey Feet

SKETCH OF REFERENCE TIES FROM TIE SHEET 925



TIES ARE TO A SPIKE IN BLAZE IN NEAR FACE

Statement of evidence relative to this corner location is on back of page.

I hereby certify that this document and the data contained herein was prepared by me or under my direct supervision.

Ernest J. Rud
Signature

11-15-2005
Date

Registration No. Minn No 9808

- Land Surveyor, Professional Engineer
 County Surveyor, County Engineer

OFFICE OF THE COUNTY RECORDER

County of _____

I hereby certify that this document was filed in the County Recorder's office at _____ M. on the

_____ day of _____ A.D., 20__

County Recorder _____

BY _____ Deputy

DOCUMENT NO. _____

STATEMENT OF EVIDENCE

ALL OF THE ORIGINAL GOVERNMENT BEARING TREES ARE NOW GONE.

THERE IS NO RE-SURVEY DATA ON FILE FOR THIS CORNER.

IN NOVEMBER 1995 M.B. RUDE MADE A SURVEY AROUND SECTION 31, TOWNSHIP 41, RANGE 22, TO LOCATE EXISTING MONUMENTS, LINES OF OCCUPATION AND ESTABLISH SEARCH AREAS. WE MADE A SEARCH WITH A MAGNETIC LOCATOR AND NO EVIDENCE OF THE CORNER WAS FOUND IN THE SEARCH. NO EXCAVATION WAS MADE, BECAUSE ANYTHING SET WOULD HAVE BEEN DESTROYED IN ROAD CONSTRUCTION.

THIS CORNER WAS SET AT THE CENTERLINE ROAD AND AT A PROPORTIONAL MEASUREMENT BETWEEN THE SOUTHEAST CORNER AND THE SOUTHWEST CORNER OF SECTION 31, TOWNSHIP 41 RANGE 22.

IN MARCH 2005 E. G. RUD AND SONS FOUND THIS MONUMENT AND ESTABLISHED KANABEC COUNTY COORDINATES ON THIS POSITION USING G.P.S. EQUIPMENT.