

# CERTIFICATE OF LOCATION OF GOVERNMENT CORNER

SOUTHEAST Corner of Section 36, Township 41, Range 23, 4TH P.M.

STATE OF MINNESOTA, County of KANABEC

At the corner location shown on the sketch:  
IN MARCH 2005 FOUND THIS MONUMENT  
AND ESTABLISHED G.P.S. COORDINATES ON ITS LOCATION.

Kanabec County U.S. Survey Feet Coordinates  
NAD 1983, HARN 1996 Adjustment  
Obtained by RTK GPS Observation

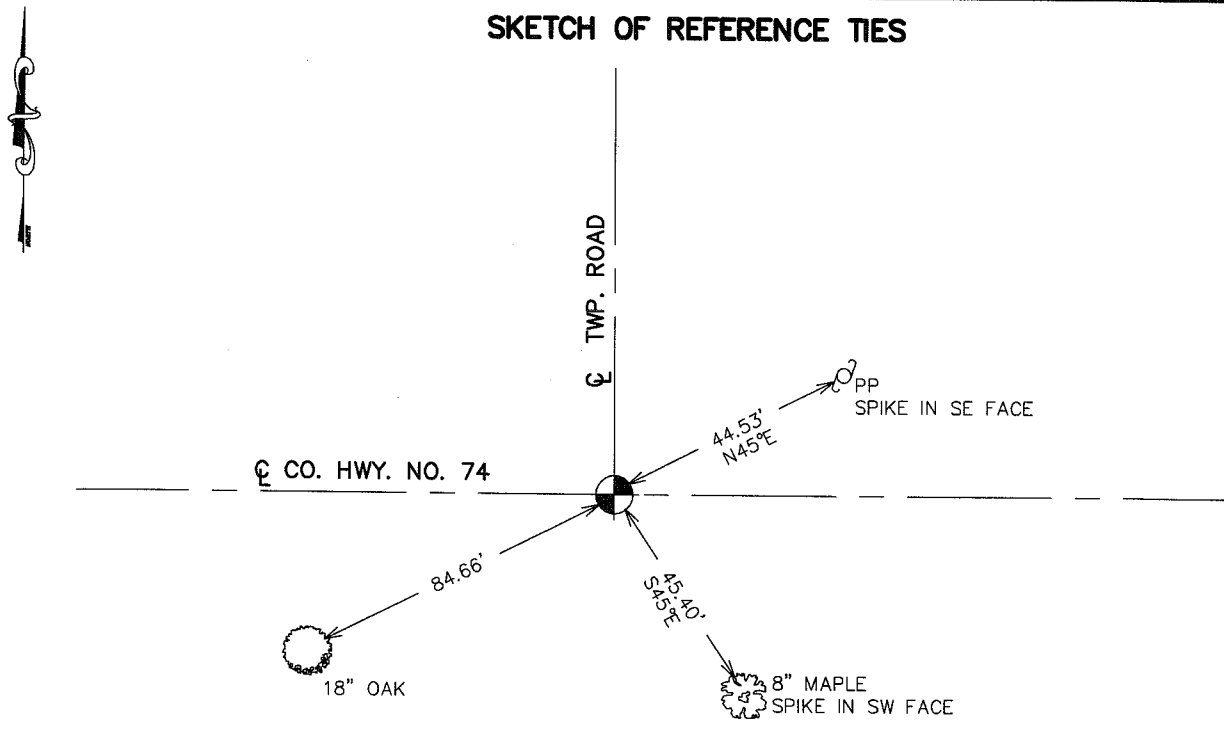
Northing= 191673.38

Easting= 428500.25

Note: NAD 1983, HARN 1996 Adjustment  
coordinates are NOT compatible with  
NAD 1983 coordinates

Note: 1 Meter=3937/1200 U.S. Survey Feet

## SKETCH OF REFERENCE TIES



TIES ARE TO SPIKE IN  
BLAZE IN NEAR FACE

Statement of evidence relative to this corner location is on back of page.

I hereby certify that this document and the data contained herein was prepared by me or under my direct supervision.

Ernest J. Reed 11-18-2005  
Signature Date

Registration No. Minn No 9808

- Land Surveyor,  Professional Engineer
- County Surveyor,  County Engineer

## OFFICE OF THE COUNTY RECORDER

County of \_\_\_\_\_

I hereby certify that this document was filed in the County Recorder's office at \_\_\_\_\_ M. on the

\_\_\_\_\_ day of \_\_\_\_\_ A.D., 20\_\_\_\_

County Recorder \_\_\_\_\_

BY \_\_\_\_\_ Deputy

DOCUMENT NO. \_\_\_\_\_

**STATEMENT OF EVIDENCE**

ALL OF THE ORIGINAL BEARING TREES ARE NOW GONE.

THERE IS NO RESURVEY DATA ON FILE FOR THIS CORNER.

ON AUGUST 20, 1985, M.B. RUDE RAN A SURVEY FROM THE SOUTHEAST CORNER OF SECTION 36, TOWNSHIP 41, RANGE 23 TO THE NORTH LINE OF SECTION 30, TOWNSHIP 41, RANGE 22, TO LOCATE EXISTING MONUMENTS, LINES OF OCCUPATION AND TO SEARCH THE AREA.

THIS CORNER FALLS AT THE INTERSECTION OF ROADS EAST, WEST AND NORTH.

ON AUGUST 20, 1985, AN EXCAVATION WAS MADE WITH A BACKHOE AT THIS LOCATION. THE EXCAVATION WAS 15 FEET SQUARE, 2.5 FEET DEEP. NO EVIDENCE WAS FOUND IN THE EXCAVATION.

THE INTERSECTION OF ROADS WAS ACCEPTED AS THE BEST AVAILABLE EVIDENCE OF THE ORIGINAL CORNER LOCATION.

IN MARCH 2005 E.G. RUD AND SONS FOUND THIS MONUMENT AND ESTABLISHED KANABEC COUNTY COORDINATES ON THIS POSITION USING G.P.S. EQUIPMENT.