

# CERTIFICATE OF LOCATION OF GOVERNMENT CORNER

<sup>W-14</sup>  
E. 1/4 Corner of Section <sup>31</sup> 36, Township 41, Range <sup>22</sup> 23 4<sup>TH</sup> P.M.

STATE OF MINNESOTA, County of KANABEC

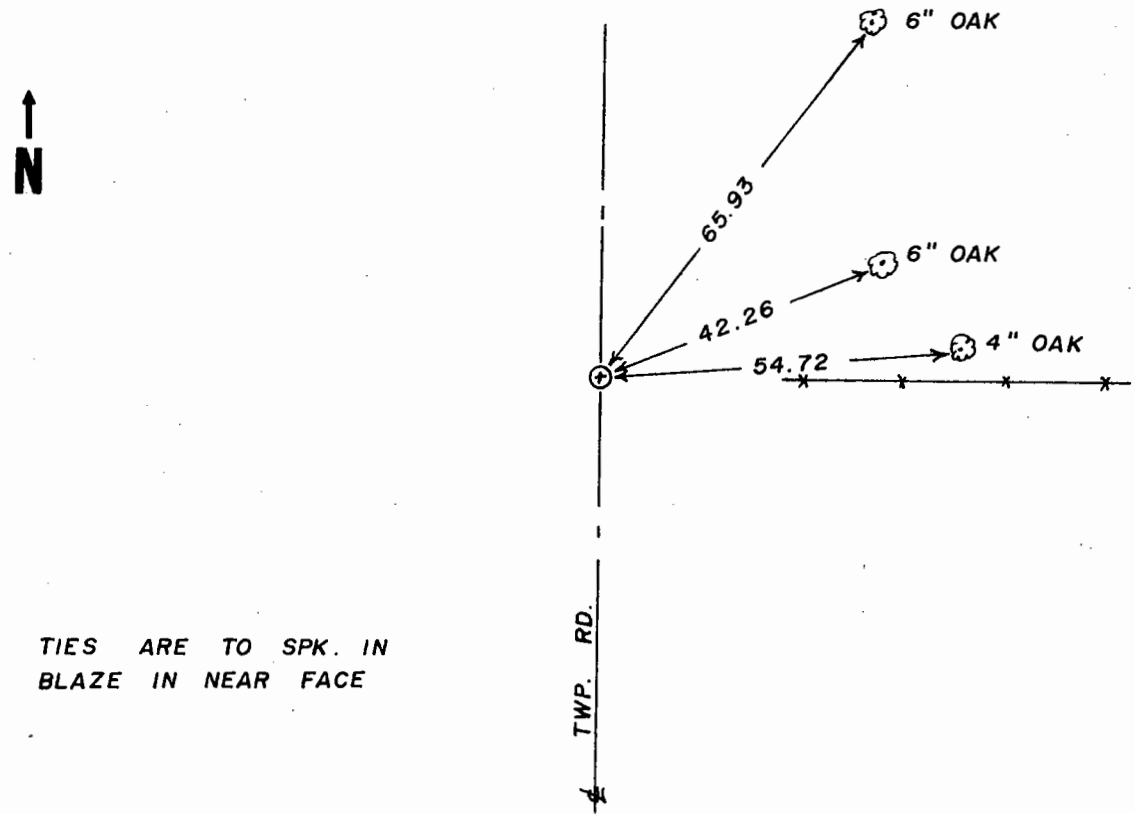
At the corner location shown on the sketch

On ..... found a .....  
Date

left monument as found,  lowered monument,  removed monument (explain)

On 8-21-85 placed a 7/8" x 24" CAPPED REBAR  
Date

### SKETCH OF REFERENCE TIES



TIES ARE TO SPK. IN  
BLAZE IN NEAR FACE

Statement of evidence relative to this corner location is on back of page.

I hereby certify that this document and the data contained herein was prepared by me or under my direct supervision.

*J.M.B. [Signature]* 7-20-85  
Signature Date

Registration No. 8195

Land Surveyor,  County Surveyor,  
 Professional Engineer  County Engineer

### OFFICE OF THE COUNTY RECORDER

County of .....  
I hereby certify that this document was filed in the  
County Recorder's office at .....M. on the  
..... day of .....A.D., 19.....

County Recorder .....  
By ..... Deputy

DOCUMENT NO. ....

50/49

**STATEMENT OF EVIDENCE**

All of the original bearing trees are now gone.

There is no resurvey data on file for this corner.

On August 20, 1985, I ran a survey from the southeast corner of Section 36, Township 41, Range 23, to the north line of Section 30, Township 41, Range 22, to locate existing monuments, lines of occupation and to search the area.

This corner falls on a north-south road and an old fence line east.

On August 20, 1985, we made an excavation with a backhoe at this location. The excavation was 10 feet east and west by 16 feet north and south, 2.5 feet deep. No evidence was found in the excavation.

The center line of the north-south road and the westerly extension of the old fence line east was accepted as the best available evidence of the original corner location. This corner is 2.15 feet west and 3.20 feet south of a line and split between the southeast and northeast corners of Section 36.