

CERTIFICATE OF LOCATION OF GOVERNMENT CORNER

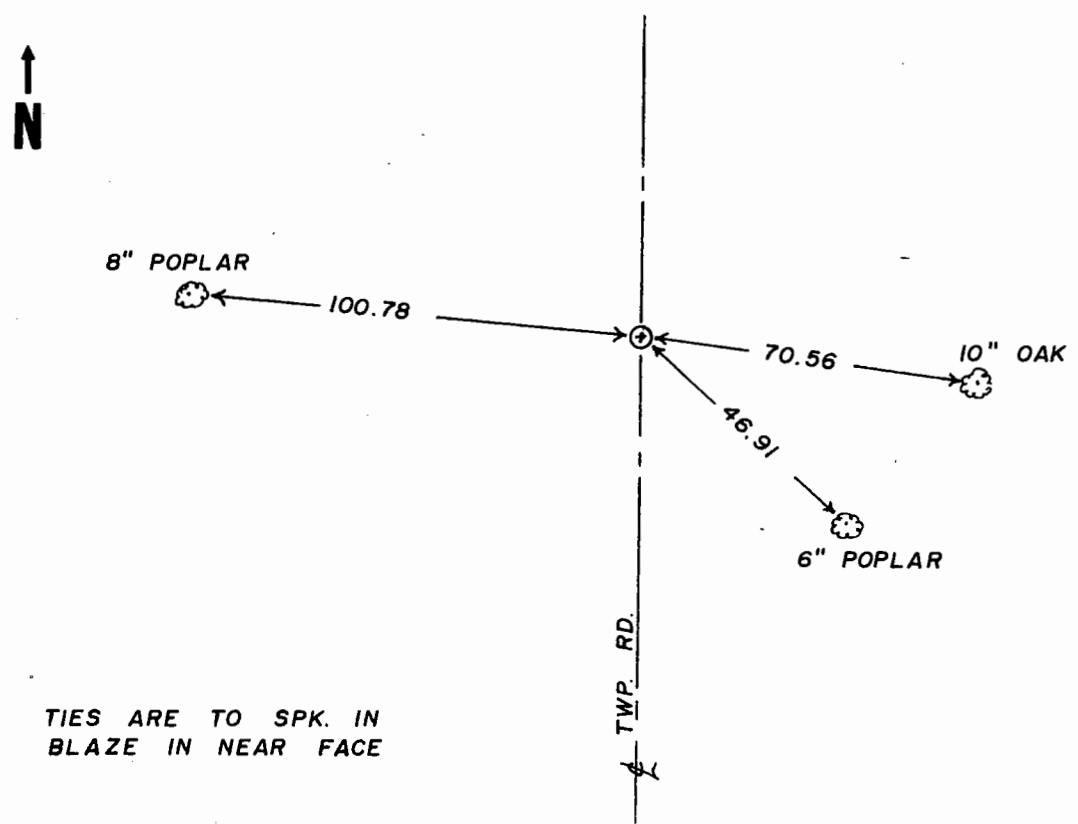
^{NW}
N. E. Corner of Section ³¹ 36, Township 41, Range ²² 23 TH 4 P.M.

STATE OF MINNESOTA, County of KANABEC

At the corner location shown on the sketch

- On found a
Date
- left monument as found, lowered monument, removed monument (explain)
- On 8 - 21 - 85 placed a 7/8" x 24" CAPPED REBAR
Date

SKETCH OF REFERENCE TIES



Statement of evidence relative to this corner location is on back of page.

I hereby certify that this document and the data contained herein was prepared by me or under my direct supervision.

[Signature]
Signature Date 9-20-85

Registration No. 8195

- Land Surveyor, County Surveyor,
- Professional Engineer County Engineer

OFFICE OF THE COUNTY RECORDER

County of

I hereby certify that this document was filed in the County Recorder's office atM. on the day ofA.D., 19.....

County Recorder

By, Deputy

DOCUMENT NO.

STATEMENT OF EVIDENCE

All of the original bearing trees are now gone.

There is no resurvey data on file for this corner.

On August 20, 1985, I ran a survey from the southeast corner of Section 36, Township 41, Range 23 to the north line of Section 30, Township 41, Range 22, to locate existing monuments, lines of occupation and to search the area.

This corner falls at the intersection of a north-south road and rock line at the edge of the fields east and west.

On August 20, 1985, we made an excavation with a backhoe at this location. The excavation was 15 feet square, 3 feet deep, 1 foot into the natural ground. No evidence was found in the excavation.

The intersection of the center line of the north-south road and rock lines east and west was accepted as the best available evidence of the original corner location.