

# CERTIFICATE OF LOCATION OF GOVERNMENT CORNER

W 1/4  
E 1/4 Corner of Section 30  
25, Township 41, Range 22  
23 <sup>TH</sup> P.M.

STATE OF MINNESOTA, County of KANABEC

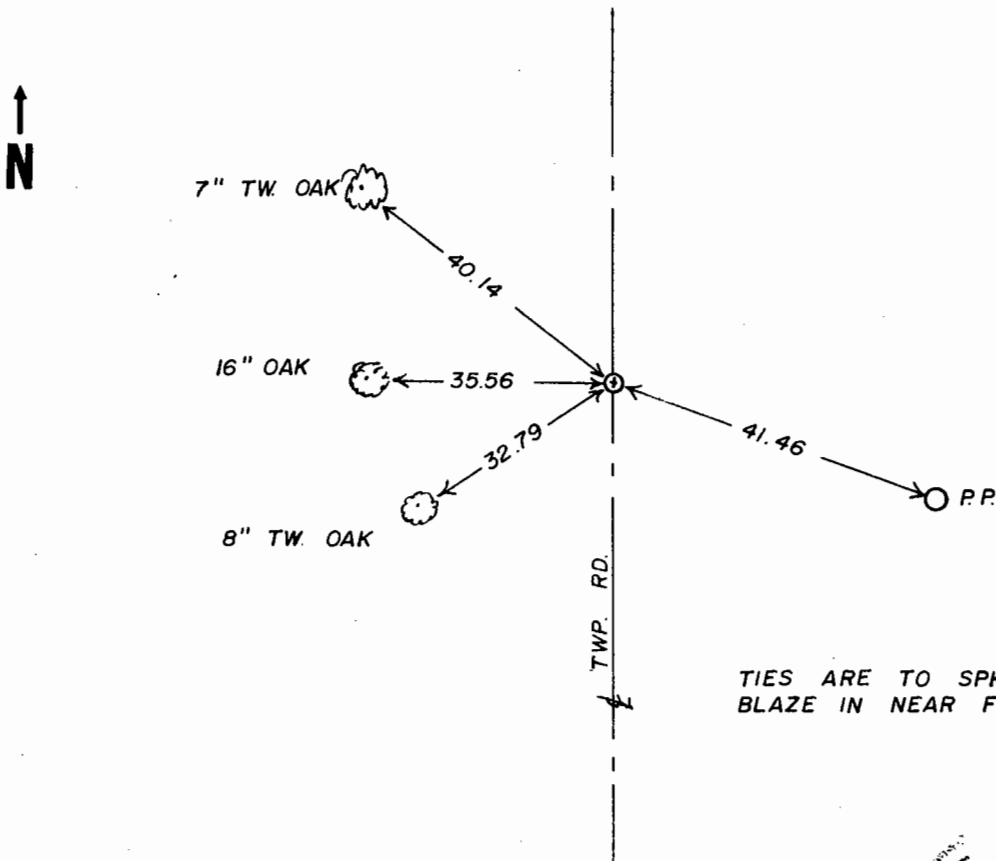
At the corner location shown on the sketch

On ..... found a .....  
Date

left monument as found,  lowered monument,  removed monument (explain)

On 10-11-88 placed a 7/8" x 24" CAPPED REBAR  
Date

## SKETCH OF REFERENCE TIES



TIES ARE TO SPK. IN  
BLAZE IN NEAR FACE

Statement of evidence relative to this corner location is on back of page.

I hereby certify that this document and the data contained herein was prepared by me or under my direct supervision.

[Signature] 10-28-44  
Signature Date

Registration No. 8195

Land Surveyor,  County Surveyor,  
 Professional Engineer  County Engineer

### OFFICE OF THE COUNTY RECORDER

County of .....

I hereby certify that this document was filed in the

County Recorder's office at .....M. on the

..... day of .....A.D., 19.....

County Recorder .....

By ....., Deputy

DOCUMENT NO. ....

55/69

## STATEMENT OF EVIDENCE

All of the original bearing trees are now gone.

There is a town road order and survey by John Buckley that shows a sandstone with a "+" cut in it at this corner and dated August 26, 1919.

In 1985, I set this corner at the PI of the road south and east at the location of a pile of small rocks. I now find that the description in the town road order calls for the east-west road to intersect the town line at a point 300 feet north of the quarter corner. Buckley's survey sketch shows the road to intersect at the quarter corner.

On October 11, 1988, we made an excavation at a point 290 to 305 feet south of the road PI with the county backhoe. We found two sandstones in the excavation, but none marked with a "+" per Buckley's survey of 1919.

I set this corner by single proportional measurement between the southeast corner of Section 25 and the northeast corner of Section 24.

This location is approximately 295 feet south of the road PI and fits the center line of the existing road. Buckley's distance for the east line of the Southeast Quarter of Section 25 was 2640 feet and our measurement is 2637.12 feet.