

CERTIFICATE OF LOCATION OF GOVERNMENT CORNER

NW Corner of Section 18, Township 41, Range 22, 4TH P.M.
NE Corner of Section 13, Township 41, Range 23

STATE OF MINNESOTA, County of KANABEC

At the corner location shown on the sketch:

Set a # 7 x 24" rebar with aluminum cap at intersection of fences

Kanabec County U.S. Survey Feet Coordinates
 NAD 1983, HARN 1996 Adjustment
 Obtained by RTK GPS Observation

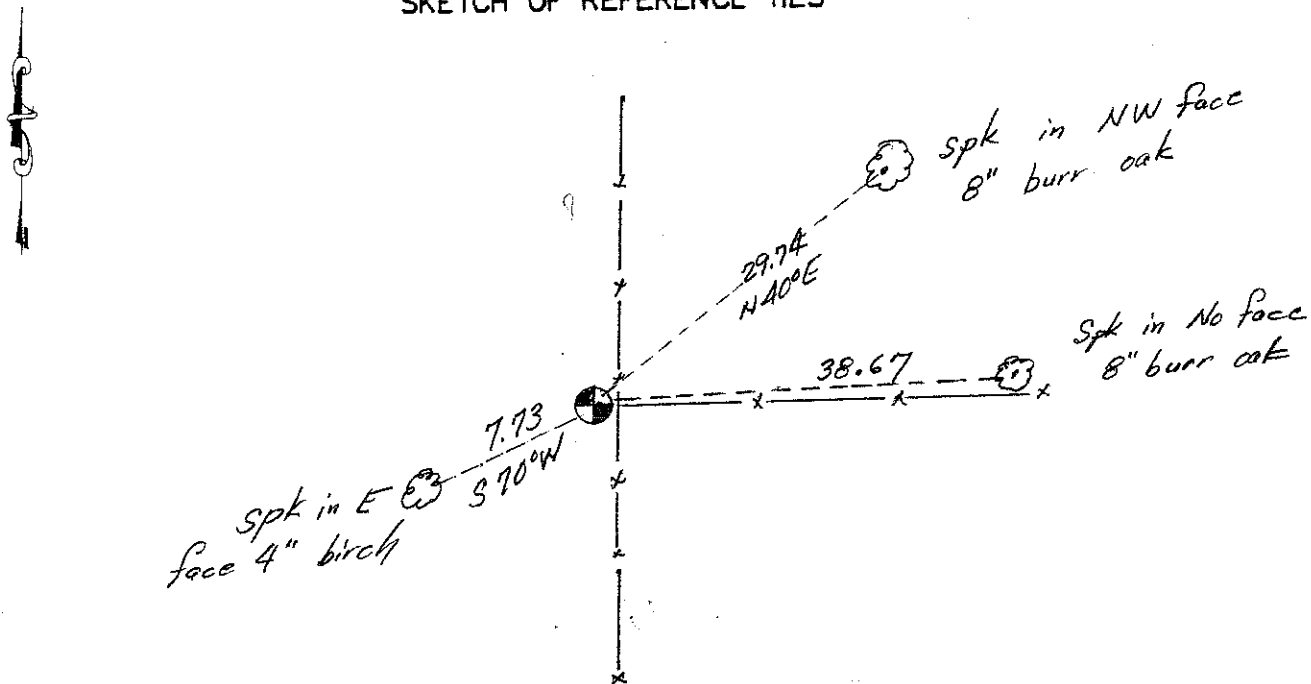
Northing= 212764.59

Easting= 428721.40

Note: NAD 1983, HARN 1996 Adjustment coordinates are NOT compatible with NAD 1983 coordinates

Note: 1 Meter=3937/1200 U.S. Survey Feet

SKETCH OF REFERENCE TIES



Statement of evidence relative to this corner location is on back of page.

I hereby certify that this document and the data contained herein was prepared by me or under my direct supervision.

Ernest E. Rud
 Signature

11-19-12
 Date

Registration No. Minn No. 9808

Land Surveyor, Professional Engineer

County Surveyor, County Engineer

OFFICE OF THE COUNTY RECORDER

County of _____

I hereby certify that this document was filed in the County Recorder's office at _____ M. on the _____ day of _____ A.D., 20____

_____ day of _____ A.D., 20____

County Recorder _____

BY _____ Deputy

DOCUMENT NO. _____

STATEMENT OF EVIDENCE: NORTHWEST CORNER 18-41-22 4122029
NORTHEAST CORNER 13-41-23 4123009

The original government post was set on October 5, 1849 and 4 bearing trees noted as:

10" Birch bearing North 5 degrees West at 20 links
8" Balsam bearing North 25 degrees West at 17 links
8" Maple bearing South 85 degrees East at 19 links
6" Balsam bearing South 40 degrees East at 15 links

No visible evidence could be found for the corner or accessories. No record of subsequent surveys could be found at the Kanabec County office.

In March 2004, E.G. Rud & Sons ran a survey along the township from the northeast corner of Section 24 to the northeast corner of the township.

This corner falls at the intersection of fences running north, south and ~~west~~^{east}. Harvey Koch, land owner in Section 18, Township 41, Range 22 testified that he and his father had established this corner for the installation of the fences. Therefore we accepted this location as the best evidence available for the replacement of this corner. A #7 rebar with an aluminum cap was set, ties taken and Kanabec County coordinates established on this position. In January 2012 this position was verified.