

CERTIFICATE OF LOCATION OF GOVERNMENT CORNER

West Quarter Corner of Section 7, Township 41, Range 22,
4th Principal Meridian, Kanabec County, State of Minnesota

At the corner location shown on the sketch:
On 12/21/2009 Placed a 7/8" X 20" CAPPED
REBAR Monument.

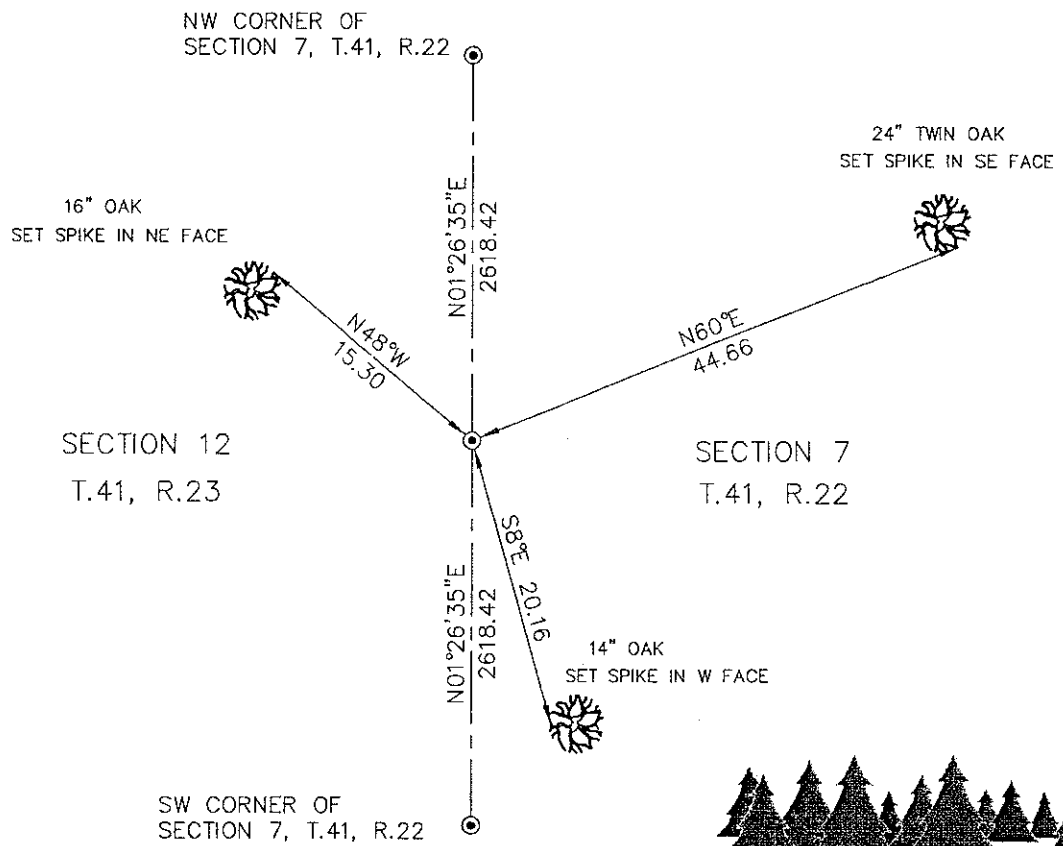
Kanabec County U.S. Survey Feet Coordinates
NAD 1983, HARN 1996 Adjustment
Obtained by RTK GPS observation
Northing: 215381.9236
Easting: 428787.5768

Note: NAD 1983, HARN 1996 Adjustment
coordinates are NOT compatible with
NAD 1983 coordinates
Note: 1 Meter = 3937/1200 U.S. Survey Feet

SKETCH OF REFERENCE TIES

NOT TO SCALE

114/39



Kroschel Land Surveyors, Inc.

1639 Main Street North, Suite 6, Pine City, MN 55063
Phone: 320-629-3267 Fax: 320-629-0176

Statement of evidence relative to this corner location is on back of page.

I hereby certify that this document and the data contained herein was prepared by me or under my direct supervision.

[Signature] 12-29-2009
Signature Date

License No. 44490

- Land Surveyor Professional Engineer
 County Surveyor County Engineer

OFFICE OF THE COUNTY RECORDER
County of Kanabec

I hereby certify that this document was filed in the
County Recorders office at _____ .M. on the
_____ day of _____ A.D., 20____

County Recorder _____
By _____, Deputy

DOCUMENT NO. _____

Statement of Evidence:

In November of 1849, Deputy Surveyor James Freeman set a post to mark the West Quarter Corner of Section 7, Township 41 North, Range 22 West, 4th Principal Meridian.

Reference ties were taken to:

- 12 inch Aspen at North 3 degrees West a distance of 19 links
- 8 inch Spruce at North 48 degrees East a distance of 20 links

All of the original Government corner evidence was searched for. None was found.

There is no resurvey data available for this corner.

In December 2009, a survey was made around Section 7, Township 41 North, Range 22 West, 4th Principal Meridian for Chad Oslin to locate existing monuments, lines of occupation and establish search areas.

On 12/21/2009 we made a search with a magnetic locator. No evidence of the corner was found. There are no occupation lines near this corner.

On 12/21/2009 set a 7/8" x 20" Rebar Monument with Aluminum Cap on line and at a proportional distance between the Northwest and Southwest corners of Section 7. Established reference ties and assigned Kanabec County Coordinates.

This location is determined to be the best available evidence of the original corner location.



Kroschel Land Surveyors, Inc.

1639 Main Street North, Suite 6, Pine City, MN 55063
Phone: 320-629-3267 Fax: 320-629-0176