

CERTIFICATE OF LOCATION OF GOVERNMENT CORNER

NW 7
NE Corner of Section 12, Township 41, Range 23, 4th P.M.

STATE OF MINNESOTA, County of KANABEC

At the corner location shown on the sketch:

*Set a # 7 x 24" rebar with
aluminum cap*

Kanabec County U.S. Survey Feet Coordinates
NAD 1983, HARN 1996 Adjustment
Obtained by RTK GPS Observation

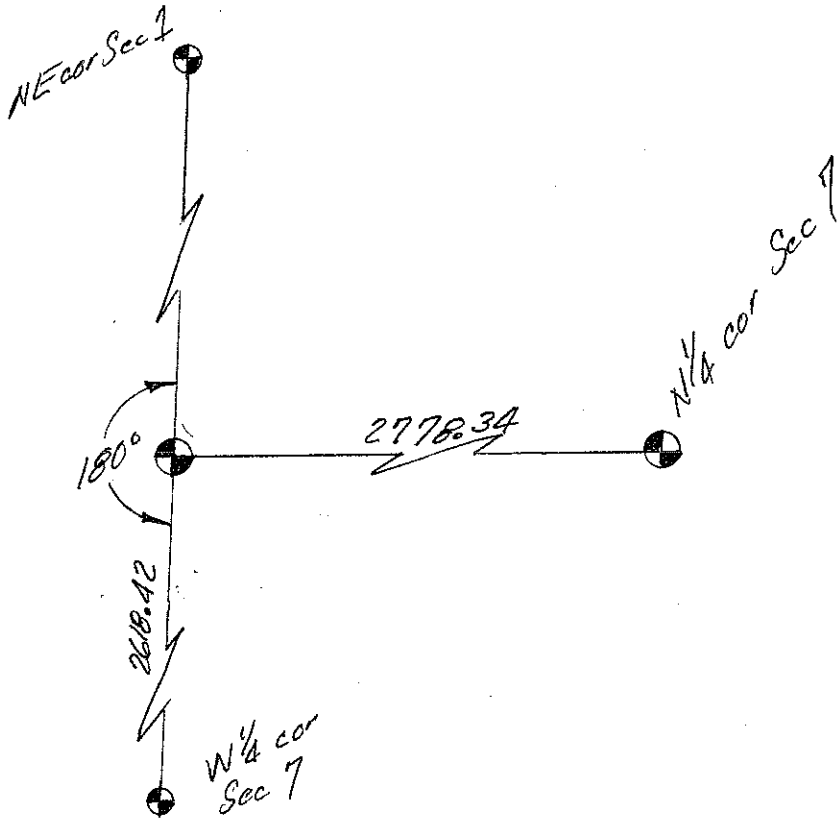
Northing= 217999.51

Easting= 428853.60

Note: NAD 1983, HARN 1996 Adjustment
coordinates are NOT compatible with
NAD 1983 coordinates

Note: 1 Meter=3937/1200 U.S. Survey Feet

SKETCH OF REFERENCE TIES



Statement of evidence relative to this corner location is on back of page.

I hereby certify that this document and the data contained herein was prepared by me or under my direct supervision.

Ernest E. Rud
Signature

11-19-12
Date

Registration No. Minn No. 9808

Land Surveyor, Professional Engineer

County Surveyor, County Engineer

OFFICE OF THE COUNTY RECORDER

County of _____

I hereby certify that this document was filed in the County Recorder's office at _____ M. on the

_____ day of _____ A.D., 20____

County Recorder _____

BY _____ Deputy

DOCUMENT NO. _____

STATEMENT OF EVIDENCE: SOUTHWEST CORNER 6-41-44 4122027
NORTHEAST CORNER 12-41-23 4123011

Original corner was set by Deputy Surveyor James Freeman on October 6, 1849 and 4 bearing trees noted as:

10" Balsam bearing South 40 degrees West at 20 links
8" Pine bearing North 48 degrees West at 36 links
8" Balsam bearing North 30 degrees East at 37 links
12" Balsam bearing South 35 degrees East at 19 links

No visible evidence could be found for the corner or bearing trees.

No records of any subsequent survey information could be found at Kanabec County offices.

In March 2004, E.G. Rud & Sons ran a survey from the northeast corner of Section 24 to the northeast corner of the township.

This corner was set as lost between the northeast corner of Section 13 and the northeast corner of Section 1. A #7 rebar with an aluminum cap was set and Kanabec County coordinates assigned to this position.