

# CERTIFICATE OF LOCATION OF GOVERNMENT CORNER

North Quarter Corner of Section 6, Township 41 North, Range 22 West,  
4th Principal Meridian, Kanabec County, State of Minnesota

At the corner location shown on the sketch:  
On 10/13/2010 set a 1/2" x 48" Iron Pipe Monument with  
Plastic Cap marked RLS 44490.

Kanabec County U.S. Survey Feet Coordinates  
NAD 1983, HARN 1996 Adjustment  
Obtained by RTK GPS observation  
Northing: 224656.2220  
Easting: 431734.1732

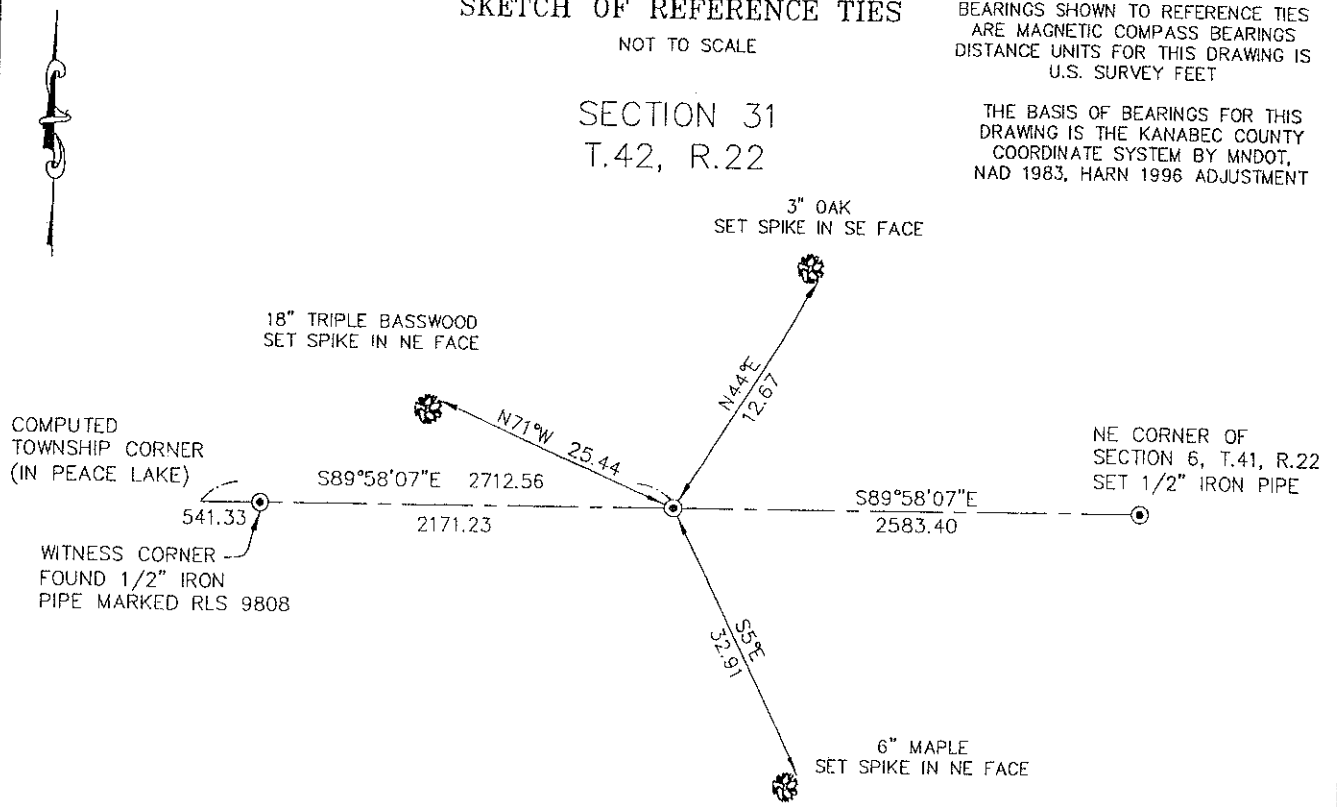
Note: NAD 1983, HARN 1996 Adjustment  
coordinates are NOT compatible with  
NAD 1983 coordinates  
Note: 1 Meter = 3937/1200 U.S. Survey Feet

## SKETCH OF REFERENCE TIES NOT TO SCALE

BEARINGS SHOWN TO REFERENCE TIES  
ARE MAGNETIC COMPASS BEARINGS  
DISTANCE UNITS FOR THIS DRAWING IS  
U.S. SURVEY FEET

THE BASIS OF BEARINGS FOR THIS  
DRAWING IS THE KANABEC COUNTY  
COORDINATE SYSTEM BY MNDOT,  
NAD 1983, HARN 1996 ADJUSTMENT

120/17



SECTION 6  
T.41, R.22



**Kroschel Land Surveyors, Inc.**  
1639 Main Street North, Suite 6, Pine City, MN 55063  
Phone: 320-629-3267 Fax: 320-629-0176

Statement of evidence relative to this corner location is on back of page.

I hereby certify that this document and  
the data contained herein was prepared  
by me or under my direct supervision.

Tyler J. Kroschel 10-27-2010  
Date

License No. 44490

- Land Surveyor
- County Surveyor

**OFFICE OF THE COUNTY RECORDER**  
County of Kanabec

I hereby certify that this document was filed in the  
County Recorder's office at \_\_\_\_\_ M. on the  
\_\_\_\_\_ day of \_\_\_\_\_ A.D., 20\_\_\_\_  
County Recorder \_\_\_\_\_  
By \_\_\_\_\_, Deputy

Statement of Evidence:

In October of 1849, Deputy Surveyor James Freeman set a post to mark the North Quarter Corner of Section 6, Township 41 North, Range 22 West, 4th Principal Meridian.

Reference ties were taken to:

14 inch Sugar Maple at South 22 degrees West a distance of 19 links

8 inch Balsam at North 17 degrees West a distance of 10 links

All of the original Government corner evidence was searched for. None was found.

There is no resurvey data available for this corner.

1918 Townships of Pomroy and Kroschel file road orders in the office of the County Auditor opening a town road along the south line of Sections 31, 32, and 33 of Kroschel Township. No road was ever built along the south line of Section 31 and 32.

In October 2010, a survey was made around Section 6, Township 41 North, Range 22 West, 4th Principal Meridian for Darline Campbell to locate existing monuments, lines of occupation and establish search areas.

On 10/13/2010, a search was made by probing with machetes and checking with a magnetic locator. No evidence of corner was found. I set a 1/2" x 48" Iron Pipe monument with Plastic Cap marked RLS 44490 on-line and at proportional distance between the Northwest corner of Section 6 and the Northeast corner of Section 6, all in Township 41, Range 22. This location was determined to be the best available evidence of the original corner monument location. Established reference ties and assigned Kanabec County Coordinates.



Kroschel Land Surveyors, Inc.

1639 Main Street North, Suite 6, Pine City, MN 55063  
Phone: 320-629-3267 Fax: 320-629-0176