

CERTIFICATE OF LOCATION OF GOVERNMENT CORNER

Northeast Corner of Section 6, Township 41 North, Range 22 West,
4th Principal Meridian, Kanabec County, State of Minnesota

At the corner location shown on the sketch:
On 10/07/2010 set a 1/2" x 36" Iron Pipe Monument with Plastic Cap marked RLS 44490.

Kanabec County U.S. Survey Feet Coordinates
NAD 1983, HARN 1996 Adjustment
Obtained by RTK GPS observation
Northing: 224654.8048
Easting: 434317.5728

Note: NAD 1983, HARN 1996 Adjustment coordinates are NOT compatible with NAD 1983 coordinates
Note: 1 Meter = 3937/1200 U.S. Survey Feet

SKETCH OF REFERENCE TIES

NOT TO SCALE

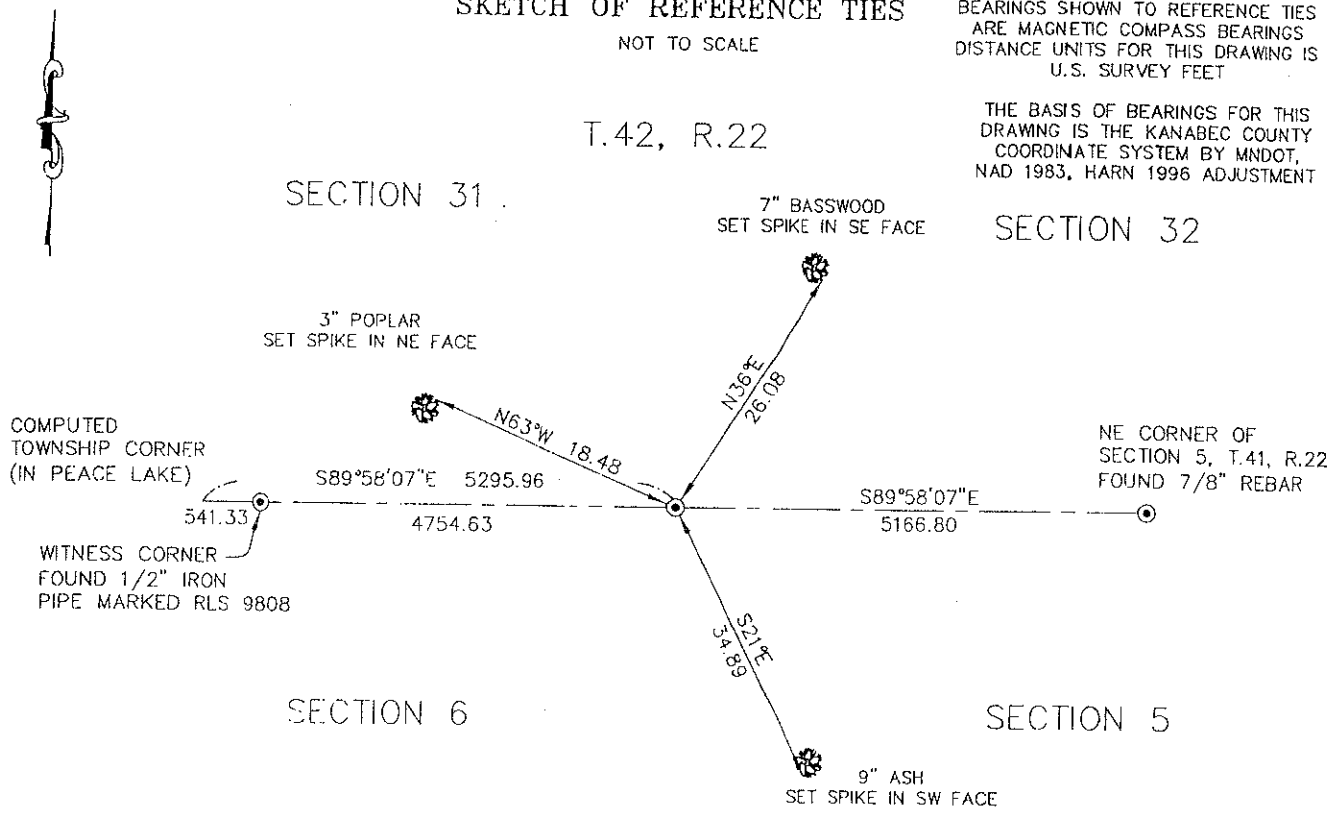
BEARINGS SHOWN TO REFERENCE TIES ARE MAGNETIC COMPASS BEARINGS
DISTANCE UNITS FOR THIS DRAWING IS U.S. SURVEY FEET

THE BASIS OF BEARINGS FOR THIS DRAWING IS THE KANABEC COUNTY COORDINATE SYSTEM BY MNDOT, NAD 1983, HARN 1996 ADJUSTMENT

T.42, R.22

SECTION 31

SECTION 32



T.41, R.22



Kroschel Land Surveyors, Inc.

1639 Main Street North, Suite 6, Pine City, MN 55063
Phone: 320-629-3267 Fax: 320-629-0176

Statement of evidence relative to this corner location is on back of page

I hereby certify that this document and the data contained herein was prepared by me or under my direct supervision.

Tyler J. Kroschel / 10-27-2010
Date

License No. 44490

- Land Surveyor
- County Surveyor

OFFICE OF THE COUNTY RECORDER
County of Kanabec

I hereby certify that this document was filed in the County Recorder's office at _____ .M. on the _____ day of _____ A.D., 20____
County Recorder _____
By _____, Deputy

DOCUMENT NO.

120/17

Statement of Evidence:

In October of 1849, Deputy Surveyor James Freeman set a post to mark the Northeast Corner of Section 6, Township 41 North, Range 22 West, 4th Principal Meridian.

Reference ties were taken to:

- 10 inch Elm at North 9 degrees West a distance of 0 links
- 10 inch Black Ash at South 30 degrees East a distance of 68 links
- 8 inch Black Ash at South 77 degrees East a distance of 77 links

All of the original Government corner evidence was searched for. None was found.

There is no resurvey data available for this corner.

1918 Townships of Pomroy and Kroschel file road orders in the office of the County Auditor opening a town road along the south line of Sections 31, 32, and 33 of Kroschel Township. No road was ever built along the south line of Section 31 and 32.

In October 2010, a survey was made around Section 6, Township 41 North, Range 22 West, 4th Principal Meridian for Darline Campbell to locate existing monuments, lines of occupation and establish search areas.

On 10/07/2010, a search was made by probing with machetes and checking with a magnetic locator. No evidence of corner was found. I set a 1/2" x 36" Iron Pipe monument with Plastic Cap marked RLS 44490 on-line and at proportional distance between the Northwest corner of Section 6 and the Northeast corner of Section 5, all in Township 41, Range 22. This location was determined to be the best available evidence of the original corner monument location. Established reference ties and assigned Kanabec County Coordinates.



Kroschel Land Surveyors, Inc.

1639 Main Street North, Suite 6, Pine City, MN 55063
Phone: 320-629-3267 Fax: 320-629-0176