

CERTIFICATE OF LOCATION OF GOVERNMENT CORNER

Northeast Corner of Section 5, Township 41 North, Range 22 West,
4th Principal Meridian, Kanabec County, State of Minnesota

At the corner location shown on the sketch:
On 10/15/2010 found a 7/8" Rebar Monument. Set a new Aluminum Cap on top.

Kanabec County U.S. Survey Feet Coordinates
NAD 1983, HARN 1996 Adjustment
Obtained by RTK GPS observation
Northing: 224651.9705
Easting: 439484.3720

Note: NAD 1983, HARN 1996 Adjustment
coordinates are NOT compatible with
NAD 1983 coordinates
Note: 1 Meter = 3937/1200 U.S. Survey Feet

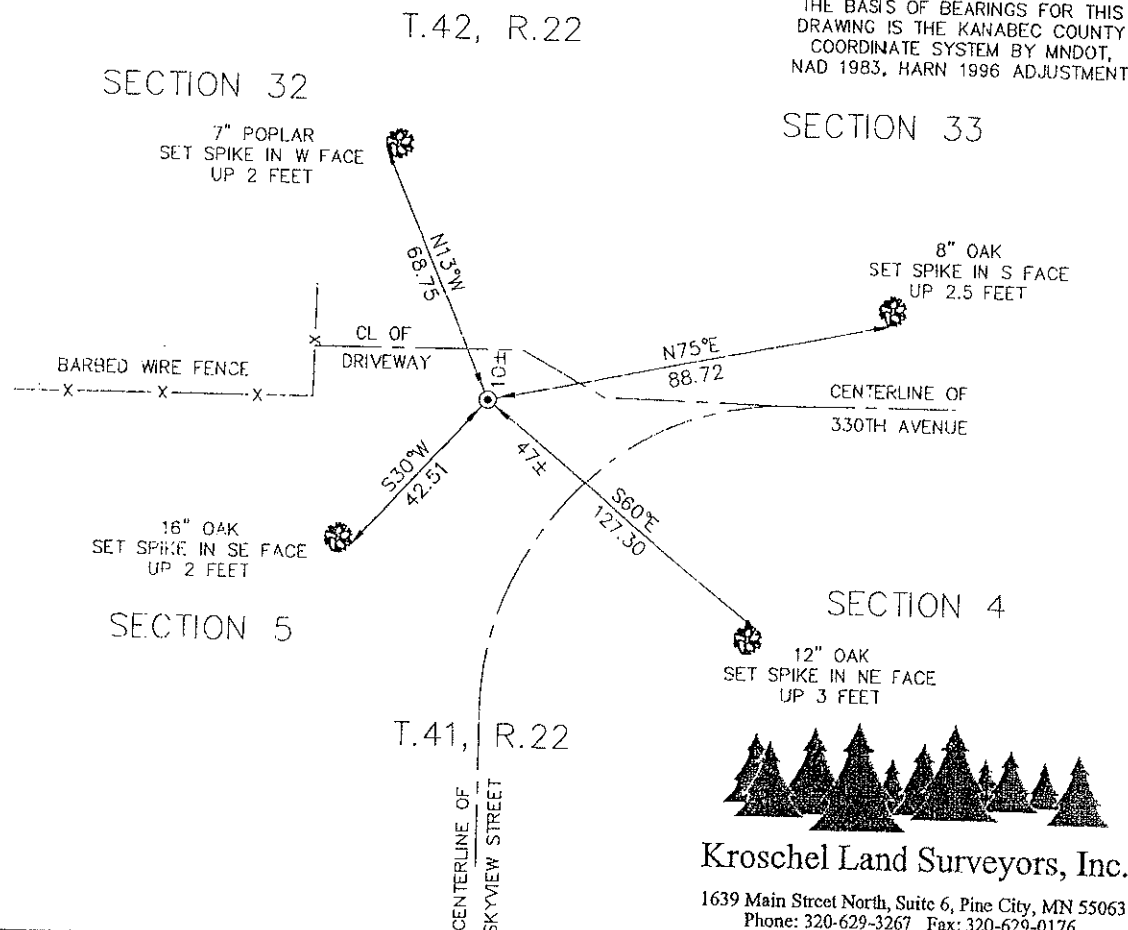
SKETCH OF REFERENCE TIES

NOT TO SCALE

BEARINGS SHOWN TO REFERENCE TIES
ARE MAGNETIC COMPASS BEARINGS
DISTANCE UNITS FOR THIS DRAWING IS
U.S. SURVEY FEET

THE BASIS OF BEARINGS FOR THIS
DRAWING IS THE KANABEC COUNTY
COORDINATE SYSTEM BY MNDOT,
NAD 1983, HARN 1996 ADJUSTMENT

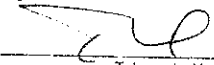
120/17




Kroschel Land Surveyors, Inc.
1639 Main Street North, Suite 6, Pine City, MN 55063
Phone: 320-629-3267 Fax: 320-629-0176

Statement of evidence relative to this corner location is on back of page.

I hereby certify that this document and the data contained herein was prepared by me or under my direct supervision.


Tyler J. Kroschel 10-27-2010
Date

License No. 44490

Land Surveyor
 County Surveyor

OFFICE OF THE COUNTY RECORDER
County of Kanabec

I hereby certify that this document was filed in the County Recorder's office at _____ M. on the _____ day of _____ A.D., 20____

County Recorder _____
By _____, Deputy
DOCUMENT NO. _____

Statement of Evidence:

In October of 1849, Deputy Surveyor James Freeman set a post to mark the Northeast Corner of Section 5, Township 41 North, Range 22 West, 4th Principal Meridian.

Reference ties were taken to:

- 10 inch Birch at North 44 degrees West a distance of 61 links
- 10 inch Birch at North 8 degrees East a distance of 13 links
- 7 inch Birch at South 7 degrees East a distance of 7 links
- 12 inch Aspen at South 24 degrees West a distance of 22 links

All of the original Government corner evidence was searched for. None was found.

1903 Pomroy Township files a road order in the office of the County Auditor opening a town road along the east line of Section 5. Attached is a survey by County Surveyor John Nelson which gives a distance of 93.75 chains along the east line of Section 5.

1903 County Surveyor John Nelson made a survey of several roads in the Township of Pomroy. He established a road along the west line of Section 4 and measured 93.75 chains between the northwest corner of Section 9 and the northwest corner of Section 4. He states he re-established this corner from government bearing trees and lists the following trees:

- Pine Stump 36" N 22 W 1.22 chains
- Tamarack 16" N 12 E 0.79 chains

He states he placed a sandstone marked "x" at all the corners marked thus "o" on the plat. (No marks are on the plat on page 314.)

1918 Townships of Pomroy and Kroschel file road orders in the office of the County Auditor opening a town road along the south line of Sections 31, 32, and 33 of Kroschel Township. Attached is a survey by S.J. Marlette dated 10-18-1917 which shows he found the Government corner at the Southwest corner of Section 33 of Kroschel Township. He shows no distances to the corner.

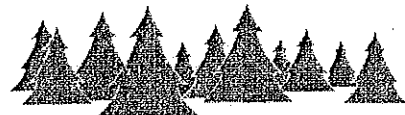
1982 Terry Johnson, RLS 13115 made a survey in Section 4. His notes show he set a rerod at the centerline intersection at the Northwest corner of Section 4. No corner certificate was filed.

1995 The MNDNR Bureau of Engineering (John Walker, RLS 16098) found a 3/4" x 15" Rebar at the intersection of roads south and east. A spike was found 1.7 feet north and 0.3 feet east of the rebar. The County Highway Department was hired to dig for this corner. A 12' x 12' hole was dug to a depth of 2 feet centered on the rebar. Nothing else was found and the rebar was reset. A distance to a county monument marking the northwest corner of Section 9 was measured at 6189.02 feet, which compares within 2 feet of John Nelson's 1903 distance. The rebar was accepted as marking the obliterated position for this corner. Mr. Walker filed a corner tie certificate in the Office of the County Recorder.

2002 John Rengo, RLS 25344 made a survey in Section 4. His notes show that the monument filed by the DNR was gone and he set a 7/8" Rebar with Aluminum Cap using the DNR ties and distance to the North Quarter corner of Section 4 (2644.21 feet). No corner certificate was filed.

In October 2010, a survey was made around Section 6, Township 41 North, Range 22 West, 4th Principal Meridian for Darline Campbell to locate existing monuments, lines of occupation and establish search areas.

On 10/15/2010, I found the 7/8" Rebar set by John Rengo, which fit well with the DNR survey information. The Aluminum Cap was gone. This location was determined to be the best available evidence of the original corner monument location. I placed a new Aluminum Cap on the rebar, established reference ties, and assigned Kanabec County Coordinates.



Kroschel Land Surveyors, Inc.

1639 Main Street North, Suite 6, Pine City, MN 55063
Phone: 320-629-3267 Fax: 320-629-0176