

CERTIFICATE OF LOCATION OF GOVERNMENT CORNER

NE Corner of Section 4, Township 41, Range 22, 4TH P.M.

STATE OF MINNESOTA, County of KANABEC

At the corner location shown on the sketch:
FOUND CAST ALUMINUM MONUMENT

Kanabec County U.S. Survey Feet Coordinates
NAD 1983, HARN 1996 Adjustment
Obtained by RTK GPS Observation

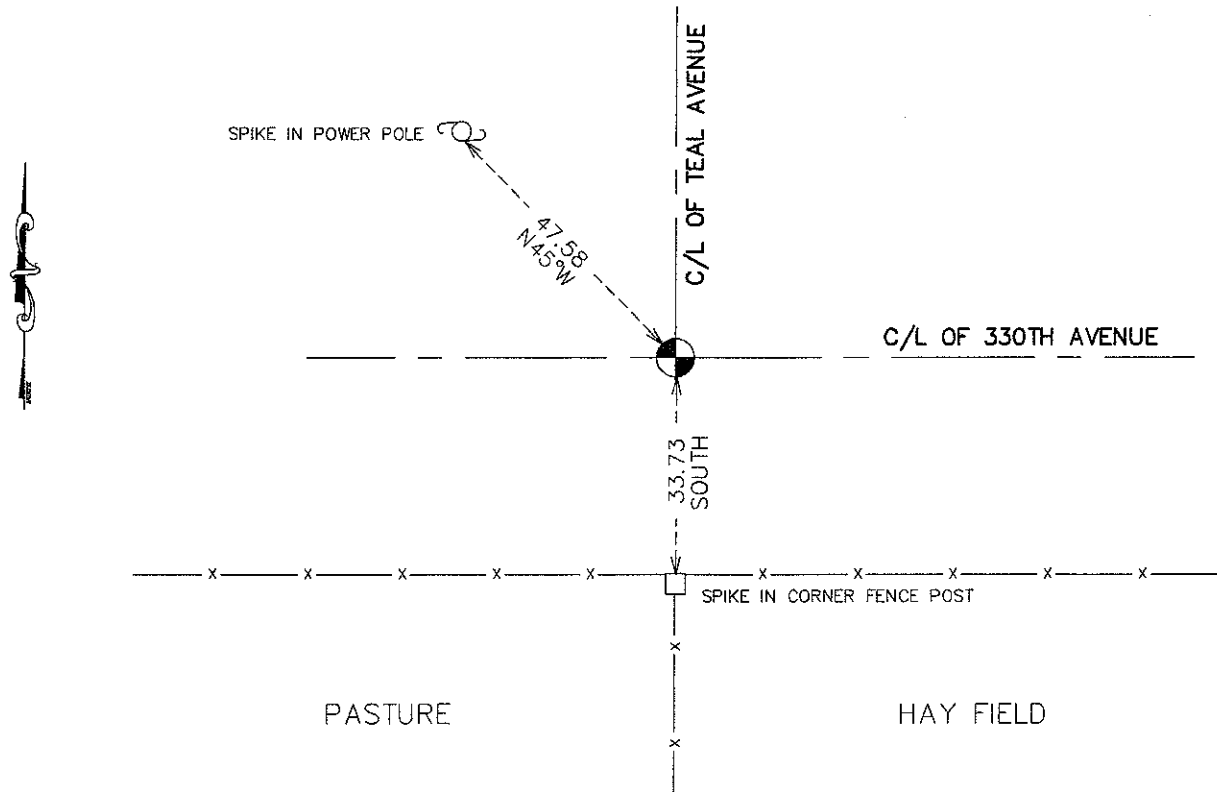
Northing= 224607.41

Easting= 444768.71

Note: NAD 1983, HARN 1996 Adjustment
coordinates are NOT compatible with
NAD 1983 coordinates

Note: 1 Meter=3937/1200 U.S. Survey Feet

SKETCH OF REFERENCE TIES



Statement of evidence relative to this corner location is on back of page.

I hereby certify that this document and the data contained herein was prepared by me or under my direct supervision.

Erick Rud
Signature

11-27-10
Date

Registration No. 9808

Land Surveyor, Professional Engineer

County Surveyor, County Engineer

OFFICE OF THE COUNTY RECORDER

County of _____

I hereby certify that this document was filed in the County Recorder's office at _____ M. on the _____ day of _____ A.D., 20____

County Recorder _____

BY _____ Deputy

DOCUMENT NO. _____

SE CORNER, SEC. 33, T42, R22

STATEMENT OF EVIDENCE

ON SEPT. 5, 1975 M.B. RUDE SET A MONUMENT FROM OLD WOOD STAKE, WHICH HE FOUND IN EXCAVATION, WHICH FIT THE CENTERLINE OF THE EAST-WEST ROAD AND TO BE SLIGHTLY WEST OF THE LINE OF OCCUPATION TO THE SOUTH. ALSO FOUND A SANDSTONE BELOW THE STAKE.

THE STAKE WAS FOUND BY GEO. H. JENKS IN 1920 AND HE SAID HE ALSO SET A SANDSTONE MARKED "X". THIS STONE COULD POSSIBLY BE THE ONE HE SET AS HE COULD HAVE MADE A MISTAKE.

ON APRIL 2010, E.G. RUD AND SONS, INC. FOUND THIS CAST ALUMINUM MONUMENT, RECHECKED THE TIES AND KANABEC COUNTY COORDINATES WERE ESTABLISHED ON THIS POSITION.