

CERTIFICATE OF LOCATION OF GOVERNMENT CORNER

SOUTH EAST Corner of Section 36, Township 41, Range 22, 4TH P.M.

STATE OF MINNESOTA, County of KANABEC

At the corner location shown on the sketch:
IN MARCH 2005 FOUND THIS MONUMENT
AND ESTABLISHED G.P.S. COORDINATES ON ITS LOCATION.

Kanabec County U.S. Survey Feet Coordinates
NAD 1983, HARN 1996 Adjustment
Obtained by RTK GPS Observation

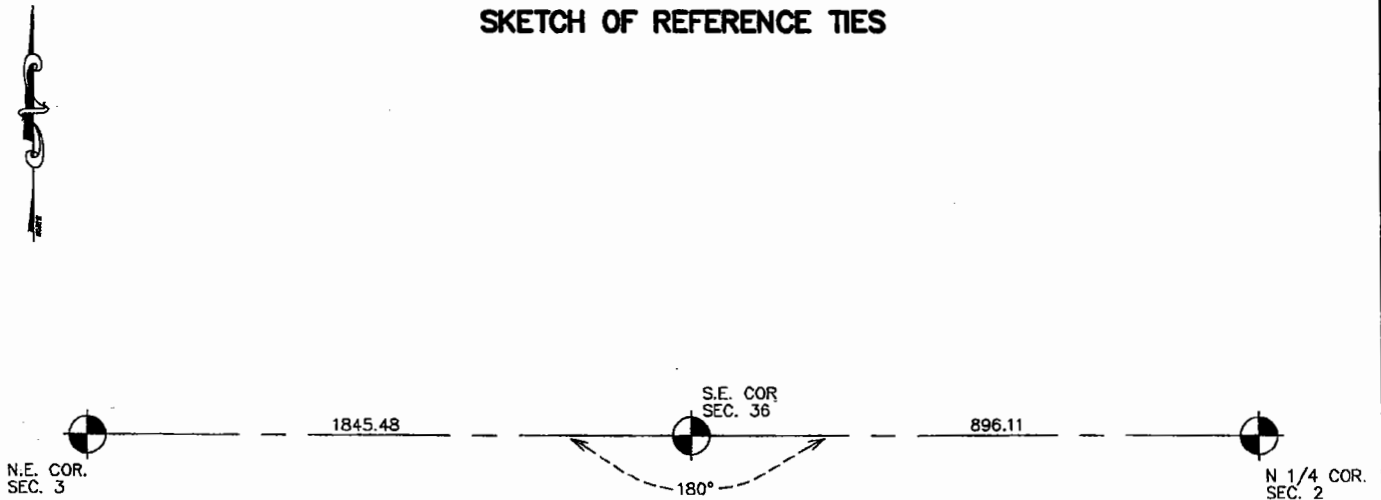
Northing= 191698.25

Easting= 460502.00

Note: NAD 1983, HARN 1996 Adjustment
coordinates are NOT compatible with
NAD 1983 coordinates

Note: 1 Meter=3937/1200 U.S. Survey Feet

SKETCH OF REFERENCE TIES



NO TIES AVAILABLE

Statement of evidence relative to this corner location is on back of page.

I hereby certify that this document and the data contained herein was prepared by me or under my direct supervision.

Ernest Rud
Signature

11-18-2005
Date

Registration No. Miss No 9808

Land Surveyor, Professional Engineer

County Surveyor, County Engineer

OFFICE OF THE COUNTY RECORDER

County of _____

I hereby certify that this document was filed in the County Recorder's office at _____ M. on the _____ day of _____ A.D., 20____

County Recorder _____

BY _____ Deputy

DOCUMENT NO. _____

STATEMENT OF EVIDENCE

ALL OF THE ORIGINAL BEARING TREES ARE NOW GONE.

THERE IS NO RESURVEY DATA ON FILE FOR THIS CORNER.

IN JANUARY OF 1986, M.B. RUDE RAN A SURVEY ALONG THE TOWNSHIP LINE TO LOCATE THE EXISTING MONUMENTS, LINES OF OCCUPATION AND TO SEARCH THE AREA.

THERE WERE NO LINES OF OCCUPATION NEAR THIS CORNER. A SEARCH WAS MADE FOR EVIDENCE OF THIS CORNER IN JANUARY AND IN APRIL OF 1986, BUT NO EVIDENCE WAS FOUND.

THIS CORNER FALLS IN A SWAMP.

THIS CORNER WAS SET ON LINE AND PROPORTIONAL MEASUREMENT BETWEEN THE SOUTHEAST CORNER OF SECTION 31, TOWNSHIP 41, RANGE 21 AND THE SOUTH QUARTER CORNER OF SECTION 35, TOWNSHIP 41, RANGE 22.

IN MARCH 2005 E.G. RUD AND SONS FOUND THIS MONUMENT AND ESTABLISHED KANABEC COUNTY COORDINATES ON THIS POSITION USING G.P.S. EQUIPMENT.