

CERTIFICATE OF LOCATION OF GOVERNMENT CORNER

 EAST QUARTER Corner of Section 6 , Township 41 , Range 23 , 4TH P.M.

STATE OF MINNESOTA, County of KANABEC

At the corner location shown on the sketch:
On / /2002 Found a 1/2" IRON PIPE.
Said monument was as found.

Kanabec County U.S. Survey Feet Coordinates
NAD 1983, HARN 1996 Adjustment
Obtained by RTK GPS Observation

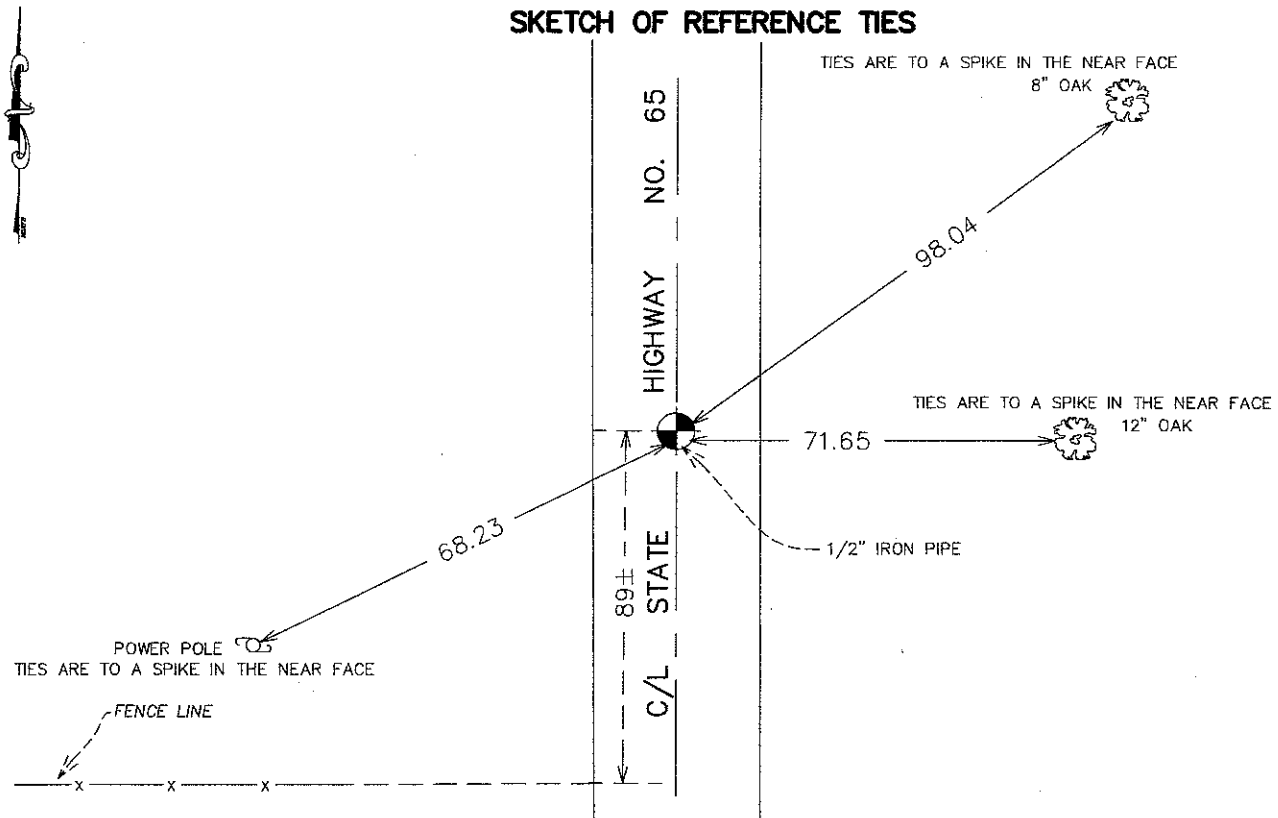
Northing= 221106.32

Easting= 402336.57

Note: NAD 1983, HARN 1996 Adjustment
coordinates are NOT compatible with
NAD 1983 coordinates

Note: 1 Meter=3937/1200 U.S. Survey Feet

SKETCH OF REFERENCE TIES



Statement of evidence relative to this corner location is on back of page.

I hereby certify that this document and the data contained herein was prepared by me or under my direct supervision.

Ernest J. Bud 11-25-2007
Signature Date

Registration No. Minn No 9808

Land Surveyor, Professional Engineer
 County Surveyor, County Engineer

OFFICE OF THE COUNTY RECORDER

County of _____

I hereby certify that this document was filed in the County Recorder's office at _____ M. on the _____ day of _____ A.D., 20____

County Recorder _____

BY _____ Deputy

DOCUMENT NO. _____

EAST QUARTER CORNER SECTION 6, T41, R23

STATEMENT OF EVIDENCE

ALL OF THE ORIGINAL BEARING TREES ARE NOW GONE.

THE STATE DEPARTMENT OF TRANSPORTATION RECORDS SHOW THIS CORNER TO BE IN THE CENTER OF STATE HIGHWAY NO. 65, BUT THEIR RECORDS DON'T SHOW WHAT WAS USED FOR THE QUARTER CORNER LOCATION.

ON JULY 16, 1985, M.B. RUDE RAN A SURVEY FROM THE SOUTHEAST CORNER TO THE NORTHEAST CORNER OF SECTION 6 AND SET THE EAST QUARTER CORNER IN THE CENTER LINE OF STATE HIGHWAY NO. 65 AT A PROPORTIONAL MEASUREMENT BETWEEN THE SOUTHEAST AND NORTHEAST CORNERS OF SECTION 6.

IN OCTOBER 2007 E.G. RUD AND SONS FOUND THIS 1/2" IRON PIPE AND ESTABLISHED KANABEC COUNTY COORDINATES ON THIS POSITION.