

CERTIFICATE OF LOCATION OF GOVERNMENT CORNER

East Quarter Corner of Section 7, Township 41 North, Range 23 West,
4th Principal Meridian, Kanabec County, State of Minnesota

At the corner location shown on the sketch:
On 3/06/2017 set a Mag Spike.

Kanabec County U.S. Survey Feet Coordinates
NAD 1983, HARN 1996 Adjustment
Obtained by RTK GPS observation
Northing: 215802.7731
Easting: 402320.3513

Note: NAD 1983, HARN 1996 Adjustment
coordinates are NOT compatible with
NAD 1983 coordinates

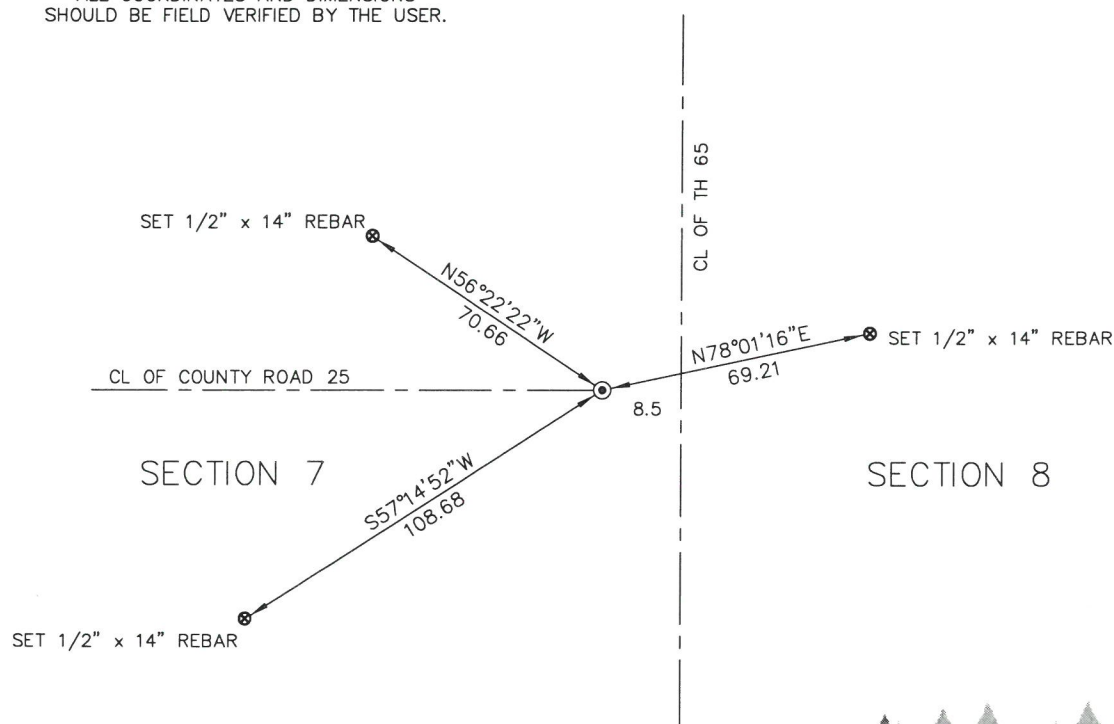
Note: 1 Meter = 3937/1200 U.S. Survey Feet

SKETCH OF REFERENCE TIES

NOT TO SCALE

KROSCHER LAND SURVEYORS, INC.
ASSUMES NO LIABILITY FOR THE ACCURACY
OF THE GPS COORDINATES SHOWN HEREON.
ALL COORDINATES AND DIMENSIONS
SHOULD BE FIELD VERIFIED BY THE USER.

THE BASIS OF BEARINGS FOR THIS
DRAWING IS THE KANABEC COUNTY
COORDINATE SYSTEM BY MNDOT,
NAD 1983, HARN 1996 ADJUSTMENT



Kroschel Land Surveyors, Inc.

1639 Main Street North, Suite 6, Pine City, MN 55063
Phone: 320-629-3267 Fax: 320-629-0176

Statement of evidence relative to this corner location is on back of page.

I hereby certify that this survey, plan, or report was prepared by me or under my direct supervision, that the United States public land survey monument record is correct and complete to the best of my knowledge and belief, and that I am a duly Licensed Land Surveyor under the laws of the State of Minnesota.

Tyler J. Kroschel 12-28-2017

Tyler J. Kroschel Date

License No. 44490

☐ Land Surveyor ☒ County Surveyor

OFFICE OF THE COUNTY RECORDER

County of Kanabec

I hereby certify that this document was filed in the
County Recorder's office at _____ .M. on the
_____ day of _____ A.D., 20____
County Recorder _____

By _____, Deputy

DOCUMENT NO. _____

Statement of Evidence:

In October of 1851, Deputy Surveyor John Gay set a post to mark the East Quarter Corner of Section 7, Township 41 North, Range 23 West, 4th Principal Meridian.

Reference ties were taken to:

- 6 inch Pine at North 85 degrees East a distance of 17 links
- 6 inch Oak at North 49 degrees West a distance of 4 links

All of the original Government corner evidence was searched for. None was found.

1961— Minnesota Department of Highways right of way plans for Trunk Highway 65 show the corner being west of the centerline of Highway 65 and on the centerline of a public road running west. The map does not state if anything was found at that location. The stationing gives a distance of 2652.2 feet to the northeast corner of Section 7 and 2669.9 feet to the southeast corner of Section 7.

In March 2017, a survey was made around Section 7, Township 41 North, Range 23 West, 4th Principal Meridian for Tom Aiels to locate existing monuments, lines of occupation and establish search areas.

On 3/6/2017 I made a search with a metal locator at the centerline intersection and on a straight line between the northeast and southeast corners of Section 7. No evidence of the corner was found. I set a Mag Spike on the centerline of County Road 25 and on—line between the northeast and southeast corners of Section 7. This location is approx. 8.5 feet west of the centerline of T.H. 65. I measure 2656.71 feet to the northeast corner of Section 7 and 2666.66 feet to the southeast corner of Section 7.

I accepted this location as the best available evidence of the original corner location. Established reference ties and assigned Kanabec County Coordinates.

No excavation was made at this location.



Kroschel Land Surveyors, Inc.

1639 Main Street North, Suite 6, Pine City, MN 55063
Phone: 320-629-3267 Fax: 320-629-0176