

CERTIFICATE OF LOCATION OF GOVERNMENT CORNER

Northeast Corner of Section 18, Township 41 North, Range 23 West,
4th Principal Meridian, Kanabec County, State of Minnesota

At the corner location shown on the sketch:

On 3/06/2017 set a 1/2" x 14" rebar with plastic cap
marked KROSCHER 44490.

Kanabec County U.S. Survey Feet Coordinates
NAD 1983, HARN 1996 Adjustment
Obtained by RTK GPS observation
Northing: 213136.1795
Easting: 402301.8970

Note: NAD 1983, HARN 1996 Adjustment
coordinates are NOT compatible with
NAD 1983 coordinates

Note: 1 Meter = 3937/1200 U.S. Survey Feet

SKETCH OF REFERENCE TIES

NOT TO SCALE

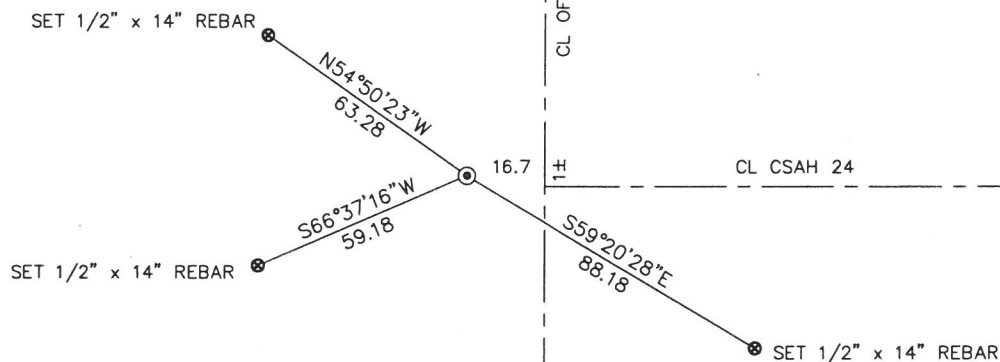
KROSCHER LAND SURVEYORS, INC.
ASSUMES NO LIABILITY FOR THE ACCURACY
OF THE GPS COORDINATES SHOWN HEREON.
ALL COORDINATES AND DIMENSIONS
SHOULD BE FIELD VERIFIED BY THE USER.

THE BASIS OF BEARINGS FOR THIS
DRAWING IS THE KANABEC COUNTY
COORDINATE SYSTEM BY MNDOT,
NAD 1983, HARN 1996 ADJUSTMENT



SECTION 7

SECTION 8



SECTION 18

SECTION 17



Kroschel Land Surveyors, Inc.

1639 Main Street North, Suite 6, Pine City, MN 55063
Phone: 320-629-3267 Fax: 320-629-0176

Statement of evidence relative to this corner location is on back of page.

I hereby certify that this survey, plan, or report was prepared by me or under my direct supervision, that the United States public land survey monument record is correct and complete to the best of my knowledge and belief, and that I am a duly Licensed Land Surveyor under the laws of the State of Minnesota.

Tyler J. Kroschel

Date

12-28-2017

License No. 44490

☐ Land Surveyor

☒ County Surveyor

OFFICE OF THE COUNTY RECORDER

County of Kanabec

I hereby certify that this document was filed in the
County Recorder's office at _____ .M. on the
_____ day of _____ A.D., 20____
County Recorder _____

By _____, Deputy

DOCUMENT NO. _____

Statement of Evidence:

In October of 1851, Deputy Surveyor John Gay set a post to mark the Northeast Corner of Section 18, Township 41 North, Range 23 West, 4th Principal Meridian.

Reference ties were taken to:

- 18 inch Pine at North 37 degrees East a distance of 37 links
- 9 inch Balsam at South 84 degrees West a distance of 4 links

All of the original Government corner evidence was searched for. None was found.

1902— Book 1 of 2, P.18 filed at the County Highway Department. County Surveyor John Nelson surveyed a road along the south line of Section 8. He set a Sandstone marked + at the southwest corner of Section 8 and established two ties. He measured a distance of 79.80 chains (5266.8 feet) to the southeast corner of Section 8. (I measure 5301 feet±)

1925— Tie Sheet #94 filed at the County Highway Department. County Surveyor Geo. Jenks filed a tie sheet for the northwest corner of Section 17. He found an old post and set a stone in its place. He made two ties.

1961— Minnesota Department of Highways right of way plans for Trunk Highway 65 show the corner 16.7 feet west of the centerline of Highway 65 and 1.1 feet north of the centerline of a public road running east. The map does not state what was found at that location. The stationing gives a distance of 5322.1 feet to the northeast corner of Section 7 and 5330.6 feet to the southeast corner of Section 18.

1975— Job #668—C for Kanabec County Highway Department. County Surveyor M.B. Rude made a survey of CSAH No. 24. He did not set any monument at this corner, but does give a distance and angle from the north quarter corner of Section 17 to the centerline intersection of Trunk Highway 65 and CSAH No. 24.

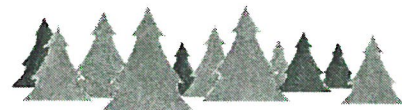
2001— County Surveyor Ernie Rud's worksheet for Sections 3—5, 8—10 and 15—17 show he set a P.K. nail at M.B. Rude's location (being the centerline intersection).

In March 2017, a survey was made around Section 7, Township 41 North, Range 23 West, 4th Principal Meridian for Tom Aiels to locate existing monuments, lines of occupation and establish search areas.

On 3/6/2017 I made a search with a metal locator at the centerline intersection and 16.7 feet west of the centerline intersection. No evidence of the corner was found. I set a 1/2" x 14" rebar with plastic cap 16.7 feet west of the centerline of T.H. 65 and 1.1 feet north of the centerline of CSAH 24, per the dimensions on the highway right of way map. I measure 5323.37 feet to the northeast corner of Section 7 and 5326.5 feet to the southeast corner of Section 18.

I accepted this location as the best available evidence of the original corner location. Established reference ties and assigned Kanabec County Coordinates.

No excavation was made at this location. The Highway Department's plans indicate a subcut in this area. Any remaining evidence of the corner would have been destroyed by road construction.



Kroschel Land Surveyors, Inc.

1639 Main Street North, Suite 6, Pine City, MN 55063
Phone: 320-629-3267 Fax: 320-629-0176