

CERTIFICATE OF LOCATION OF GOVERNMENT CORNER

East Quarter Corner of Section 18, Township 41 North, Range 23 West,
4th Principal Meridian, Kanabec County, State of Minnesota

At the corner location shown on the sketch:
On 8/11/2017 set a Mag Spike.

Kanabec County U.S. Survey Feet Coordinates
NAD 1983, HARN 1996 Adjustment
Obtained by RTK GPS observation
Northing: 210471.1614
Easting: 402291.8253

Note: NAD 1983, HARN 1996 Adjustment
coordinates are NOT compatible with
NAD 1983 coordinates

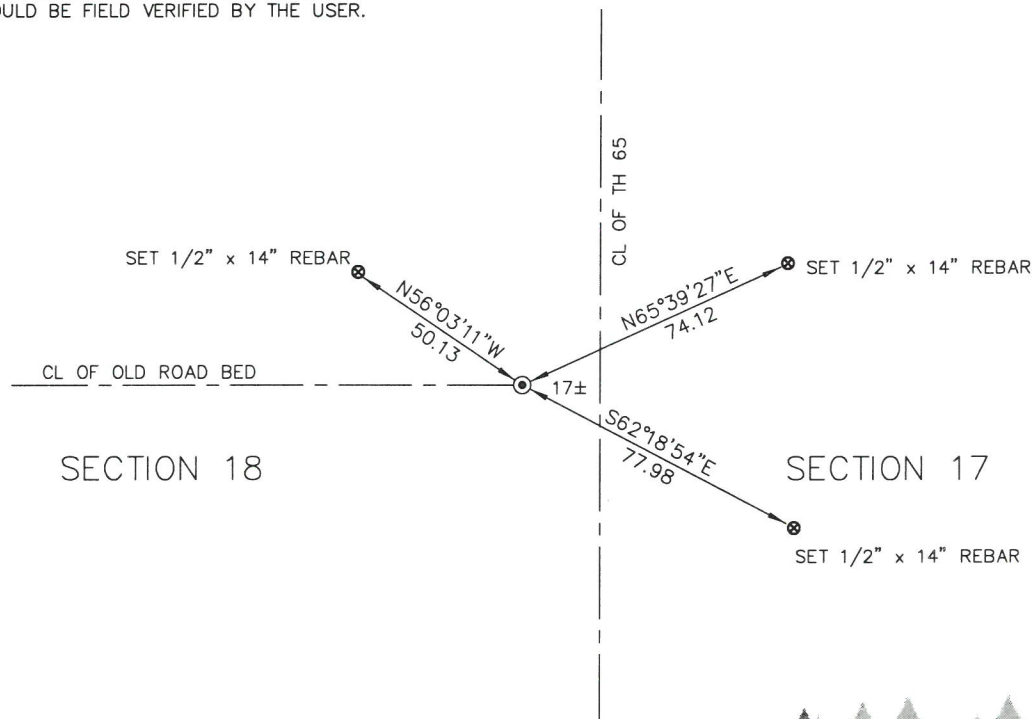
Note: 1 Meter = 3937/1200 U.S. Survey Feet

SKETCH OF REFERENCE TIES

NOT TO SCALE

KROSCHER LAND SURVEYORS, INC.
ASSUMES NO LIABILITY FOR THE ACCURACY
OF THE GPS COORDINATES SHOWN HEREON.
ALL COORDINATES AND DIMENSIONS
SHOULD BE FIELD VERIFIED BY THE USER.

THE BASIS OF BEARINGS FOR THIS
DRAWING IS THE KANABEC COUNTY
COORDINATE SYSTEM BY MNDOT,
NAD 1983, HARN 1996 ADJUSTMENT

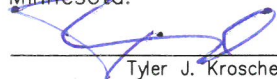


Kroschel Land Surveyors, Inc.

1639 Main Street North, Suite 6, Pine City, MN 55063
Phone: 320-629-3267 Fax: 320-629-0176

Statement of evidence relative to this corner location is on back of page.

I hereby certify that this survey, plan, or report was prepared by me or under my direct supervision, that the United States public land survey monument record is correct and complete to the best of my knowledge and belief, and that I am a duly Licensed Land Surveyor under the laws of the State of Minnesota.


Tyler J. Kroschel

12-28-2017
Date

License No. 44490

☐ Land Surveyor

☒ County Surveyor

OFFICE OF THE COUNTY RECORDER

County of Kanabec

I hereby certify that this document was filed in the
County Recorder's office at _____ .M. on the
_____ day of _____ A.D., 20____

County Recorder _____

By _____, Deputy

DOCUMENT NO. _____

Statement of Evidence:

In October of 1851, Deputy Surveyor John Gay set a post to mark the East Quarter Corner of Section 18, Township 41 North, Range 23 West, 4th Principal Meridian.

Reference ties were taken to:

12 inch Pine at South 82 degrees East a distance of 9 links

7 inch Sugar at North 70 degrees West a distance of 10 links

All of the original Government corner evidence was searched for. None was found.

1961— Minnesota Department of Highways right of way plans for Trunk Highway 65 show the corner being west of the centerline of Highway 65 and on the centerline of a public road running west. The map does not state if anything was found at that location. The stationing gives a distance of 2667.1 feet to the northeast corner of Section 18 and 2663.5 feet to the southeast corner of Section 18.

In March 2017, a survey was made around Section 17, Township 41 North, Range 23 West, 4th Principal Meridian for John Mahlke to locate existing monuments, lines of occupation and establish search areas.

On 8/11/2017 I made a search with a metal locator at the centerline intersection and on a straight line between the northeast and southeast corners of Section 18. No evidence of the corner was found. I set a Mag Spike on the centerline of the old road bed west and on-line between the northeast and southeast corners of Section 18. This location is approx. 17 feet west of the centerline of T.H. 65. I measure 2665.04 feet to the northeast corner of Section 18 and 2661.44 feet to the southeast corner of Section 18.

I accepted this location as the best available evidence of the original corner location. Established reference ties and assigned Kanabec County Coordinates.

No excavation was made at this location.



Kroschel Land Surveyors, Inc.

1639 Main Street North, Suite 6, Pine City, MN 55063
Phone: 320-629-3267 Fax: 320-629-0176