

CERTIFICATE OF LOCATION OF GOVERNMENT CORNER

NORTH 1/4 Corner of Section 19, Township 41, Range 23, 4TH P.M.

STATE OF MINNESOTA, County of KANABEC

SET A #7 REBAR WITH ALUMINUM CAP

Kanabec County U.S. Survey Feet Coordinates
NAD 1983, HARN 1996 Adjustment
Obtained by RTK GPS Observation

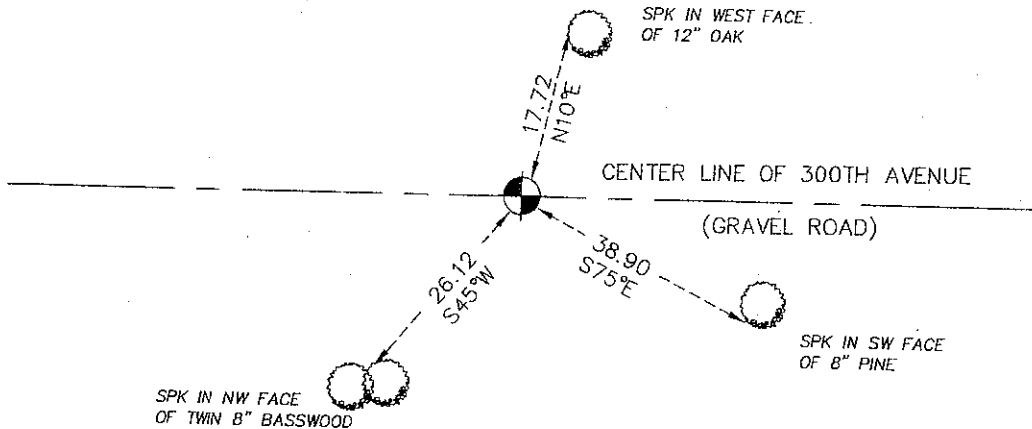
Northing= 207823.01

Easting= 399653.00

Note: NAD 1983, HARN 1996 Adjustment
coordinates are NOT compatible with
NAD 1983 coordinates

Note: 1 Meter=3937/1200 U.S. Survey Feet

SKETCH OF REFERENCE TIES



Statement of evidence relative to this corner location is on back of page.

I hereby certify that this document and the data contained herein was prepared by me or under my direct supervision.

Ernest J. Rud
Signature

4-29-09
Date

Registration No. 9808

Land Surveyor, Professional Engineer

County Surveyor, County Engineer

OFFICE OF THE COUNTY RECORDER

County of _____

I hereby certify that this document was filed in the County Recorder's office at _____ M. on the _____ day of _____ A.D., 20____

County Recorder _____

BY _____ Deputy

DOCUMENT NO. _____

S1/4 CORNER SECTION 22, TOWNSHIP 41, RANGE 24

STATEMENT OF EVIDENCE

THE ORIGINAL CORNER WAS SET BY DEPUTY SURVEYOR JOHN M. GIOY ON OCT. 14, 1851 AND TWO BEARING TREES WERE ESTABLISHED. NO VISIBLE EVIDENCE FOR THE CORNER OR BEARING TREES REMAIN. NO SUBSEQUENT SURVEYS COULD BE FOUND IN THE SURVEY BOOKS AT KANABEC COUNTY WHICH WOULD OF USED THIS CORNER.

THERE IS A ROAD OPENING ALONG THE NORTH LINE OF SECTION 19 DATED JUNE 20, 1914 FILED IN KANABEC COUNTY AUDITORS OFFICE. THERE WAS NO RECORD OF A SURVEY BEING DONE FOR THIS 2 ROD ROAD OPENING.

THIS CORNER FALLS ON THE CENTERLINE OF AN EAST-WEST TOWNSHIP ROAD FROM WHICH AN OLD FENCE LINE RUNS SOUTH AND AN ESTABLISHED OCCUPATION LINE RUNS NORTH.

IN MARCH, 2009 E.G. RUD AND SONS RAN A SURVEY AROUND SECTION 19, T.41, R.23 TO LOCATE EXISTING MONUMENTATION AND LINES OF OCCUPATION. TODAY THE NW CORNER OF SEC. 19 FALLS IN A POND WHILE AT THE TIME OF THE ORIGINAL SURVEY THIS WAS RECORDED AS A SWAMP. THE NW CORNER OF SEC. 19 WAS ESTABLISHED BY EXTENDING A LINE FROM THE SW CORNER OF SEC. 19 THRU THE WEST QUARTER ON EQUAL DISTANCE AS WEST LINE OF THE SOUTHWEST QUARTER. THIS FITS THE GOVERNMENT CHAINAGE TO THE EDGE OF THE SWAMP AND THE CENTER LINE OF THE TOWN ROAD AT THE NORTH QUARTER CORNER FITS WITHIN 2 FEET OF A LINE RUN FROM THE NORTHWEST TO NORTHEAST CORNER OF SEC. 19. A KANABEC COUNTY MONUMENT WAS SET AT THIS LOCATION AND TIES WERE TAKEN. KANABEC COUNTY COORDINATES WERE ESTABLISHED USING G.P.S. EQUIPMENT.