

CERTIFICATE OF LOCATION OF GOVERNMENT CORNER

~~WEST QUARTER~~ 19 41 23
EAST QUARTER Corner of Section 22, Township 41, Range 23, 4TH P.M.

STATE OF MINNESOTA, County of KANABEC

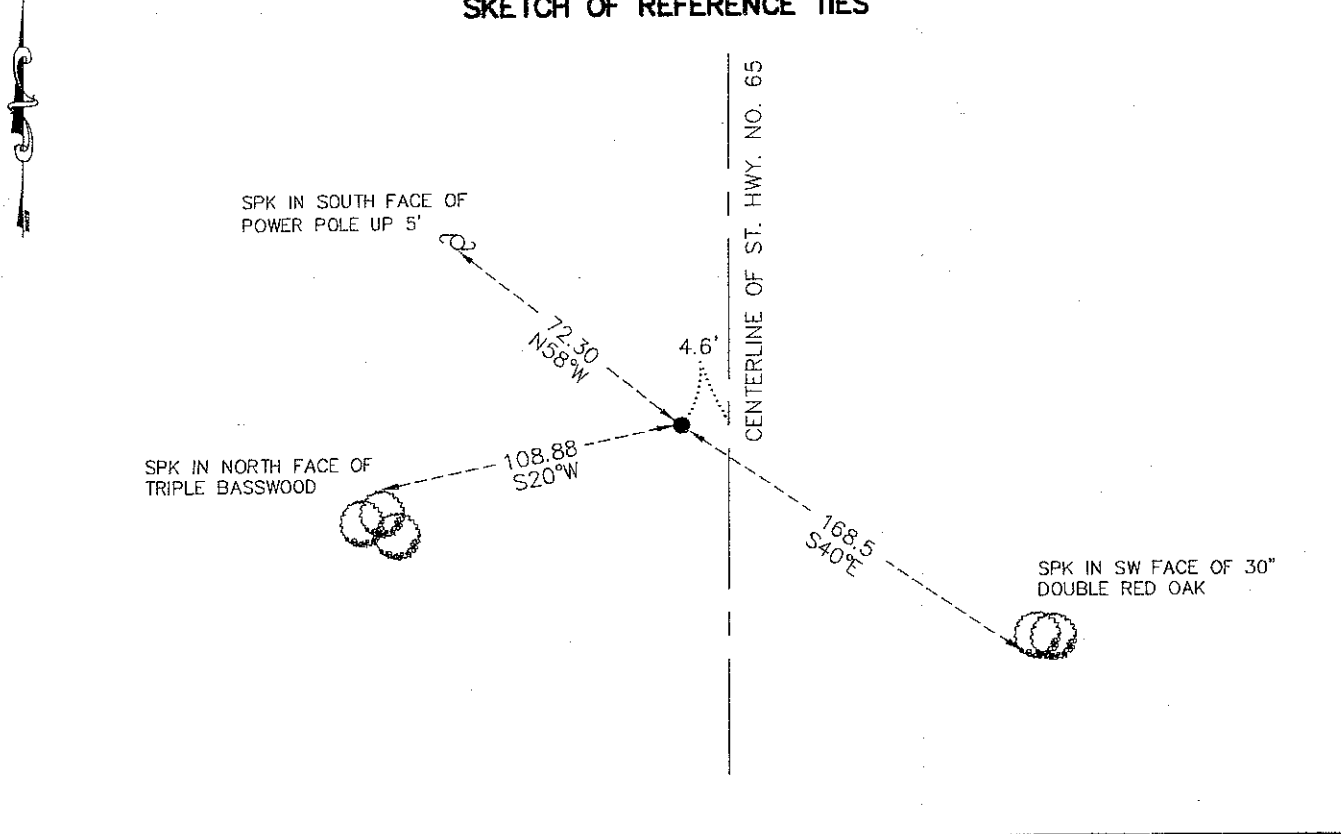
ON 3/19/2009 SET A 1/2" IRON PIPE

Kanabec County U.S. Survey Feet Coordinates
NAD 1983, HARN 1996 Adjustment
Obtained by RTK GPS Observation

Northing= 205160.24
Easting= 402275.22

Note: NAD 1983, HARN 1996 Adjustment
coordinates are NOT compatible with
NAD 1983 coordinates
Note: 1 Meter=3937/1200 U.S. Survey Feet

SKETCH OF REFERENCE TIES



Statement of evidence relative to this corner location is on back of page.

I hereby certify that this document and the data contained herein was prepared by me or under my direct supervision.

Ernest J. Rud 4-29-2009
Signature Date

Registration No. 9808

- Land Surveyor, Professional Engineer
- County Surveyor, County Engineer

OFFICE OF THE COUNTY RECORDER

County of _____

I hereby certify that this document was filed in the County Recorder's office at _____ M. on the _____ day of _____ A.D., 20____

County Recorder _____
BY _____ Deputy

DOCUMENT NO. _____

E1/4 CORNER SECTION 19, TOWNSHIP 41, RANGE 23

STATEMENT OF EVIDENCE

ALL OF THE ORIGINAL CORNER AND BEARING TREES WERE REMOVED IN THE CONSTRUCTION OF HIGHWAY NO. 65

M.B. RUDE SET THIS CORNER ON LINE AND SPLIT OF THE EAST LINE OF SECTION 19. THIS LOCATION FITS THE LINE OF OCCUPATION AT THE SIXTEENTH CORNERS NORTH AND SOUTH OF THIS CORNER

IN MARCH 2009 E.G. RUD AND SONS DID A SURVEY AROUND SECTION 19 AND THIS CORNER HAD BEEN DESTROYED. E.G. RUD AND SONS RESET THIS CORNER BY SINGLE PROPORTIONATE BETWEEN THE NORTHEAST AND SOUTHEAST CORNERS OF SECTION 19. THIS FIT THE ONE REMAINING TIE OF M.B. RUDE. NEW TIES WERE TAKEN AND KANABEC COUNTY COORDINATES WERE ESTABLISHED USING G.P.S. EQUIPMENT.