

# CERTIFICATE OF LOCATION OF GOVERNMENT CORNER

NORTH QUARTER Corner of Section 30, Township 41, Range 23, 4TH P.M.

STATE OF MINNESOTA, County of KANABEC

At the corner location shown on the sketch:

7/8" X 24" CAPPED REBAR

Kanabec County U.S. Survey Feet Coordinates  
 NAD 1983, HARN 1996 Adjustment  
 Obtained by RTK GPS Observation

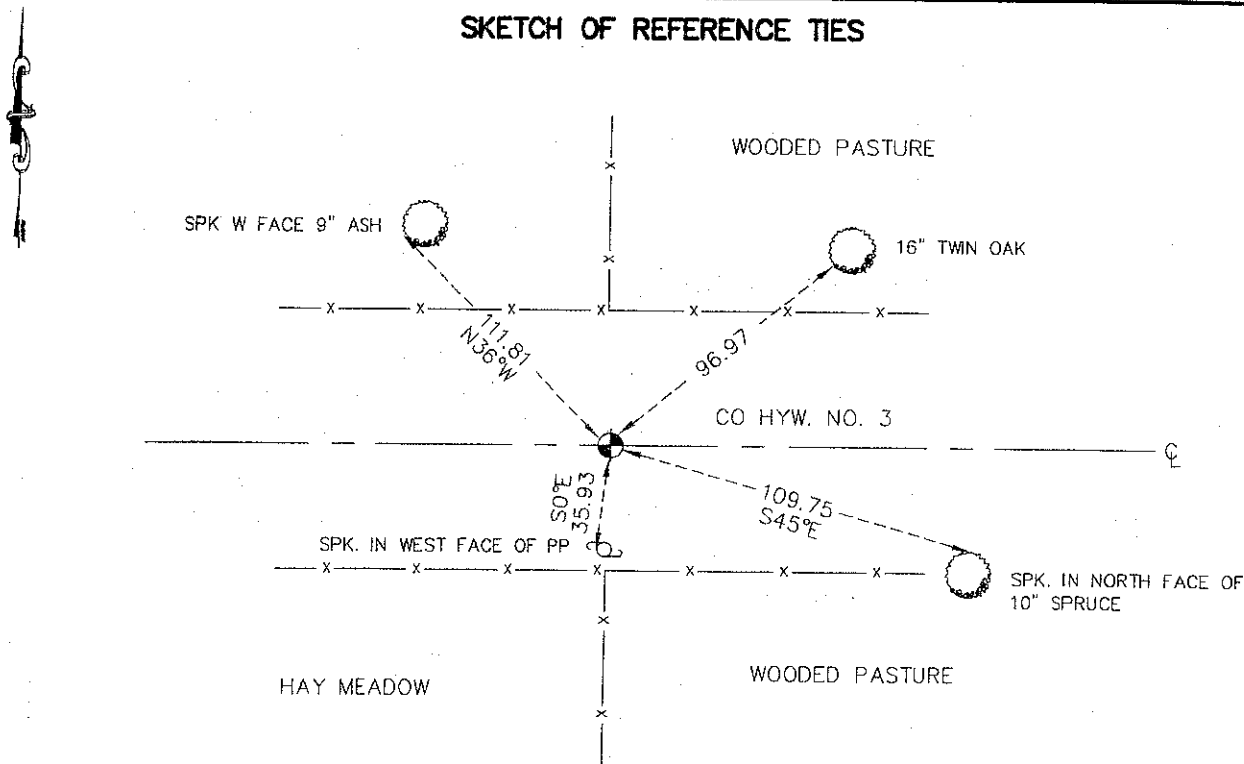
Northing= 202545.92

Easting= 399640.53

Note: NAD 1983, HARN 1996 Adjustment  
 coordinates are NOT compatible with  
 NAD 1983 coordinates

Note: 1 Meter=3937/1200 U.S. Survey Feet

### SKETCH OF REFERENCE TIES



TIES ARE TO SPK. IN  
 BLAZE IN NEAR FACE

Statement of evidence relative to this corner location is on back of page.

I hereby certify that this document and the data contained herein was prepared by me or under my direct supervision.

*Ernest Blud*  
 Signature

3-17-2009  
 Date

Registration No. 9808

Land Surveyor,     Professional Engineer

County Surveyor,     County Engineer

### OFFICE OF THE COUNTY RECORDER

County of \_\_\_\_\_

I hereby certify that this document was filed in the County Recorder's office at \_\_\_\_\_ M. on the \_\_\_\_\_ day of \_\_\_\_\_ A.D., 20 \_\_\_\_\_

County Recorder \_\_\_\_\_

BY \_\_\_\_\_ Deputy

DOCUMENT NO. \_\_\_\_\_

NORTH 1/4 CORNER SECTION 30, TOWNSHIP 41, RANGE 23

**STATEMENT OF EVIDENCE**

ALL OF THE ORIGINAL BEARING TREES ARE NOW GONE.

THERE IS NO RESURVEY DATA ON FILE FOR THIS CORNER. THERE ARE FENCE LINES NORTH AND SOUTH.

ON SEPTEMBER 4, 1986, M.B. RUDE MADE AN 15 FOOT BY 12 FOOT BY 3 FOOT DEEP EXCAVATION WITH THE COUNTY BACKHOE. THE AREA WAS SUBCUT IN PREVIOUS ROAD WORK.

NO EVIDENCE WAS FOUND IN THE EXCAVATION.

ON OCTOBER 3, 1986, M.B. RUDE SET A 7/8" BY 24" CAPPED REBAR AT THE CENTERLINE OF THE ROAD AND FENCE LINES NORTH AND SOUTH. THIS LOCATION WAS ACCEPTED AS THE OBLITERATED LOCATION OF THE ORIGINAL CORNER LOCATION AND IS 1.67 FEET EAST AND 3.1 FEET NORTH OF A STRAIGHT LINE AND PROPORTIONAL MEASUREMENT BETWEEN THE NORTHEAST AND NORTHWEST CORNERS OF SECTION 30.

ON MARCH 9, 2009 E.G. RUD AND SONS FOUND THIS #7 REBAR, TOOK NEW TIES AND ESTABLISHED KANABEC COUNTY COORDINATES ON THE MONUMENT USING G.P.S. EQUIPMENT.