

CERTIFICATE OF LOCATION OF GOVERNMENT CORNER

NORTH QUARTER Corner of Section 29, Township 41, Range 23, 4TH P.M.

STATE OF MINNESOTA, County of KANABEC

At the corner location shown on the sketch:

SET A #7 REBAR WITH CAP

Kanabec County U.S. Survey Feet Coordinates
NAD 1983, HARN 1996 Adjustment
Obtained by RTK GPS Observation

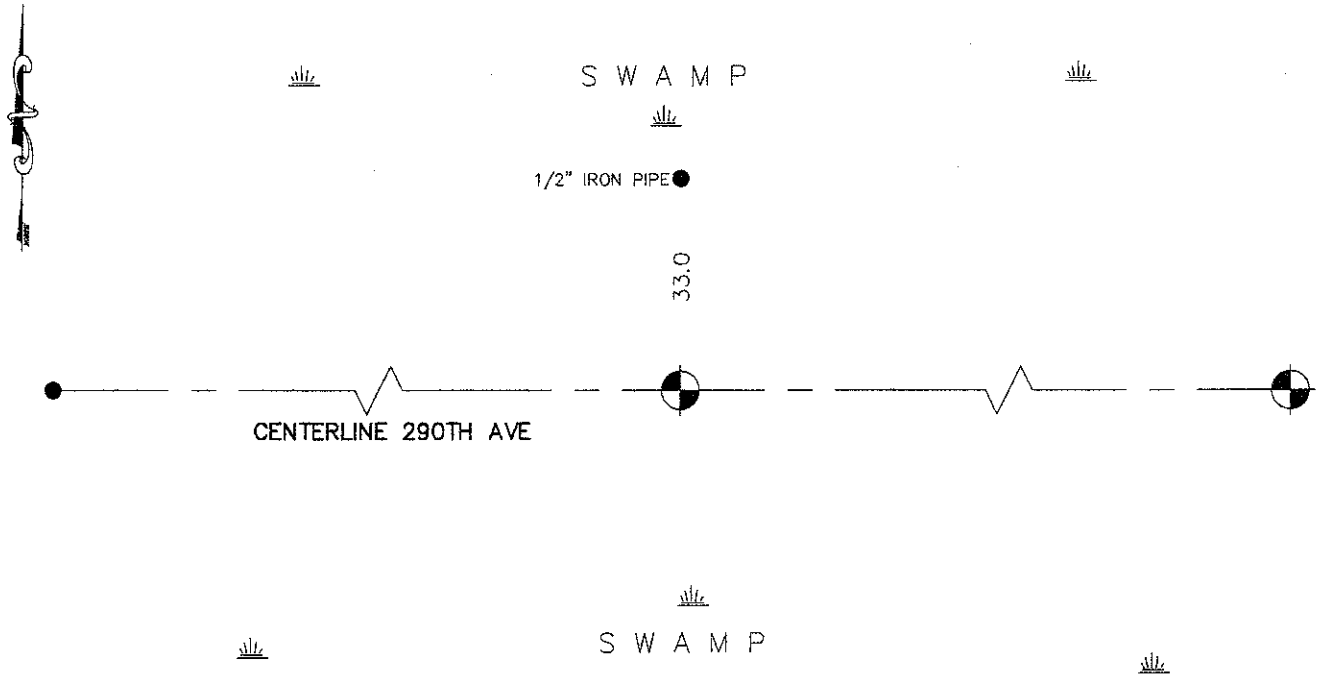
Northing= 202474.87

Easting= 404906.62

Note: NAD 1983, HARN 1996 Adjustment
coordinates are NOT compatible with
NAD 1983 coordinates

Note: 1 Meter=3937/1200 U.S. Survey Feet

SKETCH OF REFERENCE TIES



Statement of evidence relative to this corner location is on back of page.

I hereby certify that this document and the data contained herein was prepared by me or under my direct supervision.

Ernest Rud
Signature

7-18-2011
Date

Registration No. 9808

Land Surveyor, [] Professional Engineer

[] County Surveyor, [] County Engineer

OFFICE OF THE COUNTY RECORDER

County of _____

I hereby certify that this document was filed in the County Recorder's office at _____ M. on the _____ day of _____ A.D., 20____

County Recorder _____

BY _____ Deputy

DOCUMENT NO. _____

N1/4 CORNER, SEC. 29, T41, R23

STATEMENT OF EVIDENCE

THE ORIGINAL GOVERNMENT POST WAS SET BY A DEPUTY SURVEYOR JOHN M. GLEY ON OCT. 14, 1851 AND 2 BEARING TREES NOTED AS:

6" ASH @ 11 LINKS BEARING N9°W

4" ASH @ 7 LINKS BEARING S10°W

NO VISIBLE EVIDENCE REMAINS FOR THE POST OR BEARING TREES TODAY.

THIS CORNER FALLS ON THE CENTERLINE OF A TOWNSHIP ROAD RUNNING THROUGH A LARGE SWAMP. IN 1986 M.B. RUDE REESTABLISHED THIS CORNER AS LOST WHILE DOING A SURVEY IN THE SW 1/4 OF SEC. 20

ON APR. 19, 2011 E.G. RUD AND SONS, INC. SET A MONUMENT AT THIS LOCATION AND KANABEC COUNTY COORDINATES WERE ESTABLISHED ON THIS POSITION.