

CERTIFICATE OF LOCATION OF GOVERNMENT CORNER

NORTH QUARTER Corner of Section 31, Township 41, Range 23, 4TH P.M.

STATE OF MINNESOTA, County of KANABEC

At the corner location shown on the sketch:

FOUND THIS MONUMENT
AND ESTABLISHED KANABEC COUNTY COORDINATES ON ITS LOCATION.

Kanabec County U.S. Survey Feet Coordinates
NAD 1983, HARN 1996 Adjustment
Obtained by RTK GPS Observation

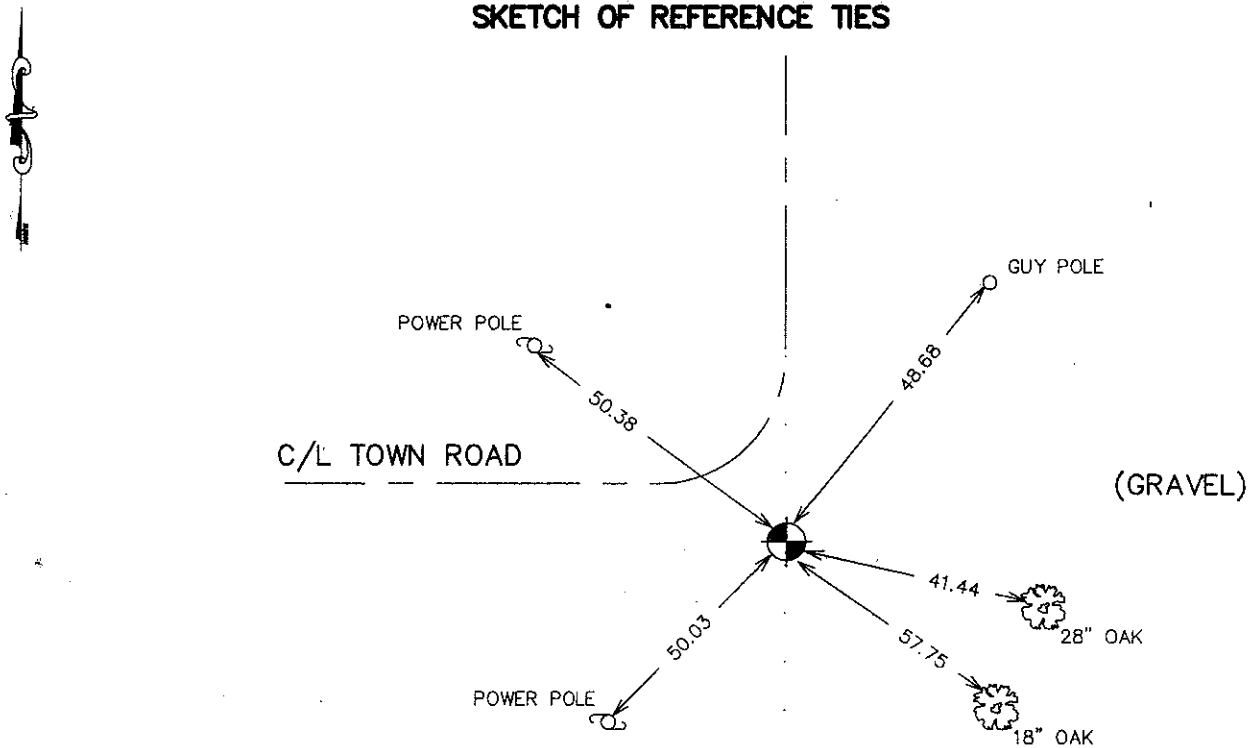
Northing= 197251.59

Easting= 399489.21

Note: NAD 1983, HARN 1996 Adjustment
coordinates are NOT compatible with
NAD 1983 coordinates

Note: 1 Meter=3937/1200 U.S. Survey Feet

SKETCH OF REFERENCE TIES



Statement of evidence relative to this corner location is on back of page.

I hereby certify that this document and the data contained herein was prepared by me or under my direct supervision.

Ernest J. Reed
Signature

10-05-2007
Date

Registration No. 9808

- Land Surveyor, Professional Engineer
 County Surveyor, County Engineer

OFFICE OF THE COUNTY RECORDER

County of _____

I hereby certify that this document was filed in the County Recorder's office at _____ M. on the _____ day of _____ A.D., 20____

County Recorder _____

BY _____ Deputy

DOCUMENT NO. _____

NORTH QUARTER CORNER SECTION 31, T41, R23

STATEMENT OF EVIDENCE

The original post was set by Deputy Surveyor John M. Gley on October 14, 1851. An oak and birch tree were used as bearing trees. No visible evidence of the corner or bearing trees remain.

On March 15, 1927 Charles Handschu made a survey of Knife Lake of which this corner was part of. A 1/2" iron pipe was set at that time.

On June 16th 1970, N.C. Hoiium found this 1/2" iron pipe and set a cast iron monument and took ties.

In May 2007, E.G.Rud found this monument and established Kanabec County coordinates on this location using G.P.S. equipment.