

CERTIFICATE OF LOCATION OF GOVERNMENT CORNER

NORTH QUARTER Corner of Section 32, Township 41, Range 23, 4TH P.M.

STATE OF MINNESOTA, County of KANABEC

At the corner location shown on the sketch:
 FOUND CAST ALUMINUM MONUMENT DOWN 6" IN GRAVEL ROAD.

Kanabec County U.S. Survey Feet Coordinates
 NAD 1983, HARN 1996 Adjustment
 Obtained by RTK GPS Observation

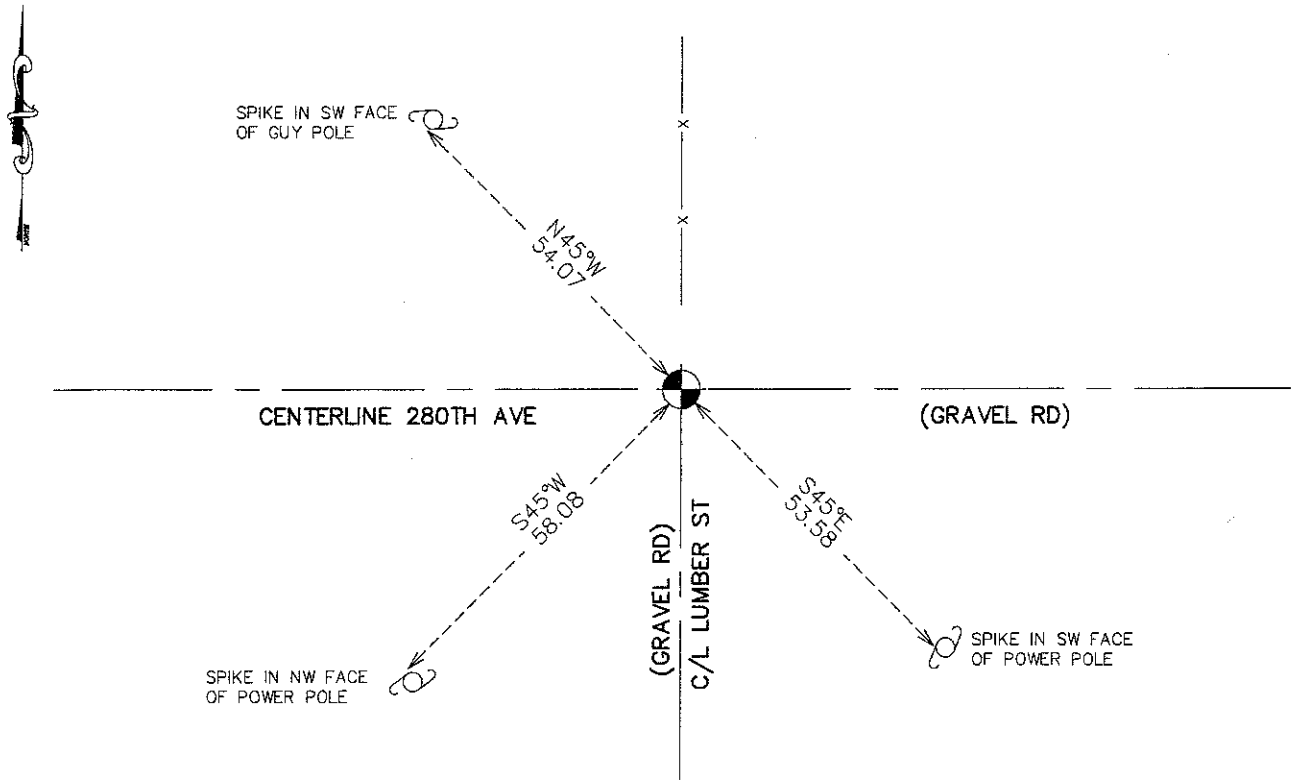
Northing= 197191.24

Easting= 404843.26

Note: NAD 1983, HARN 1996 Adjustment
 coordinates are NOT compatible with
 NAD 1983 coordinates

Note: 1 Meter=3937/1200 U.S. Survey Feet

SKETCH OF REFERENCE TIES



Statement of evidence relative to this corner location is on back of page.

I hereby certify that this document and the data contained herein was prepared by me or under my direct supervision.

Ernest Lund
 Signature

7-18-2011
 Date

Registration No. 9808

- Land Surveyor, Professional Engineer
 County Surveyor, County Engineer

OFFICE OF THE COUNTY RECORDER

County of _____

I hereby certify that this document was filed in the County Recorder's office at _____ M. on the _____ day of _____ A.D., 20____

County Recorder _____

BY _____ Deputy

DOCUMENT NO. _____

N1/4 CORNER, SEC. 32, T41, R23

STATEMENT OF EVIDENCE

THE ORIGINAL GOVERNMENT POST WAS SET BY A DEPUTY SURVEYOR JOHN M. GLEY ON OCT. 14, 1851 AND 2 BEARING TREES NOTED AS:

5" ASPEN @ 40 LINKS BEARING N70°W

4" ASPEN @ 23 LINKS BEARING S75°W

NO VISIBLE EVIDENCE REMAINS FOR THE POST OR BEARING TREES TODAY.

ON NOV. 11, 1972 M.B. PLACED A SPIKE IN THE CENTERLINE OF EAST-WEST ROAD AND AN OLD FENCE LINE RUNNING NORTH. ONE TIE TO A TELEPHONE POLE CHECKED PER SURVEY RECORD DATED 1944 IN THE REGISTRAR OF DEEDS OFFICE. .

ON OCT. 3, 1973 M.B. RUDE SET A CAST ALUMINUM MONUMENT TO REPLACE THE SPIKE AND RECORDED TIES ON CERTIFICATE OF LOCATION NO. 272.

ON SEPT. 9, 1992 M.B. RUDE FOUND A CAST ALUMINUM MONUMENT LEANING AND BROKEN AND REPLACED IT WITH A NEW CAST ALUMINUM MONUMENT AND ESTABLISHED 3 NEW TIES.

ON APR. 19, 2011 E.G. RUD AND SONS, INC. FOUND THIS MONUMENT 6 INCHES BELOW THE SURFACE OF A GRAVEL ROAD IN GOOD CONDITION. M.B. RUDE'S TIES WERE VERIFIED, NEW TIES WERE TAKEN AND KANABEC COUNTY COORDINATES WERE ESTABLISHED ON THIS POSITION.