

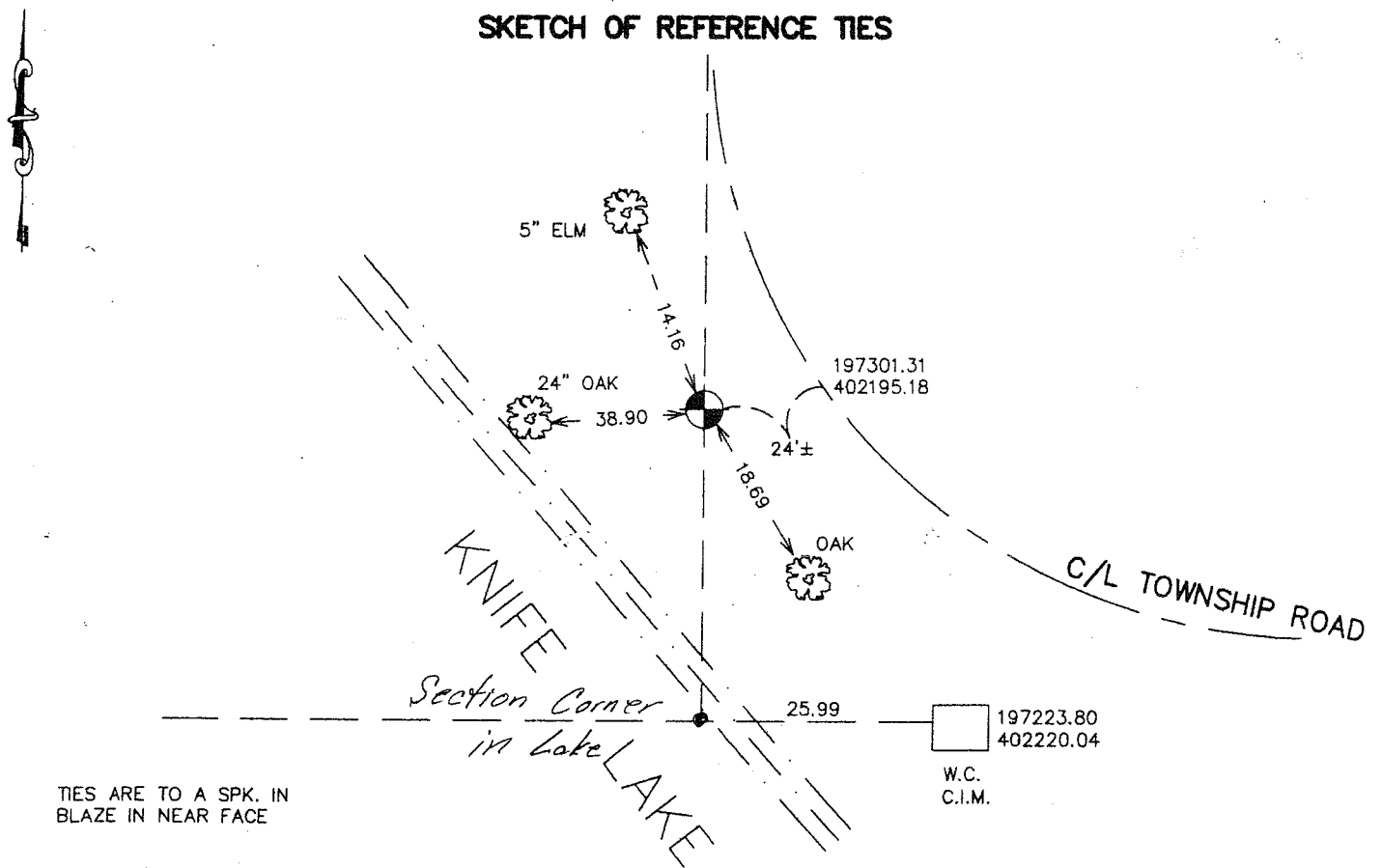
CERTIFICATE OF LOCATION OF GOVERNMENT CORNER

WHITNESS _____ Corner Between Section 29 + 30, Township 41, Range 23, 4TH P.M.
 STATE OF MINNESOTA, County of KANABEC

At the corner location shown on the sketch:
 FOUND THIS CORNER
 AND ESTABLISHED G.P.S. COORDINATES ON ITS LOCATION.

Kanabec County U.S. Survey Feet Coordinates
 NAD 1983, HARN 1996 Adjustment
 Obtained by RTK GPS Observation
 Northing= 197224.23 *Computed*
 Easting= 402194.05 *Position*
 Note: NAD 1983, HARN 1996 Adjustment
 coordinates are NOT compatible with
 NAD 1983 coordinates
 Note: 1 Meter=3937/1200 U.S. Survey Feet

SKETCH OF REFERENCE TIES



TIES ARE TO A SPK. IN
 BLAZE IN NEAR FACE

197223.80
 402220.04
 W.C.
 C.I.M.

Statement of evidence relative to this corner location is on back of page.

I hereby certify that this document and the data contained herein was prepared by me or under my direct supervision.

Ernest J. Reed 2-13-2007
 Signature Date

Registration No. Minn No 9808

- Land Surveyor, Professional Engineer
 County Surveyor, County Engineer

OFFICE OF THE COUNTY RECORDER

County of _____

I hereby certify that this document was filed in the County Recorder's office at _____ M. on the _____ day of _____ A.D., 20____

County Recorder _____

BY _____ Deputy

DOCUMENT NO. _____

SOUTHEAST CORNER SECTION 30, T41, R23

STATEMENT OF EVIDENCE

THE SOUTHEAST CORNER OF SECTION 30 FALLS IN KNIFE LAKE WHICH HAS BEEN RAISED BY THE CONSTRUCTION OF A DAM.

M.B. RUDE COMPUTED THE LOCATION OF THE SOUTHEAST CORNER OF SECTION 30 FROM THE SOUTH QUARTER CORNER OF SECTION 30 AND A WITNESS CORNER TO THE EAST AND THE SOUTH QUARTER CORNER OF SECTION 29, AND THE EXTENSION OF A LINE SOUTH FROM THE NORTHEAST CORNER OF GOVERNMENT LOT 1 AND THE NORTHEAST CORNER OF SECTION 30.

M.B. RUDE SET A WITNESS CORNER ON THE SECTION LINE BETWEEN SECTIONS 29 AND 30.

ON DECEMBER 19, 2006 E.G. RUD AND SONS FOUND THESE TWO WITNESS CORNERS AND ESTABLISHED KANABEC COUNTY COORDINATES USING G.P.S. EQUIPMENT. THIS COMPUTED POSITION FIT A LINE FROM THE NORTHEAST CORNER OF SECTION 30 THROUGH THE NORTHEAST CORNER OF GOVERNMENT LOT 1 WITHIN 0°00'03" OF A STRAIGHT LINE.