

# CERTIFICATE OF LOCATION OF GOVERNMENT CORNER

NORTHEAST Corner of Section 8, Township 41, Range 23, 4TH P.M.  
 STATE OF MINNESOTA, County of KANABEC

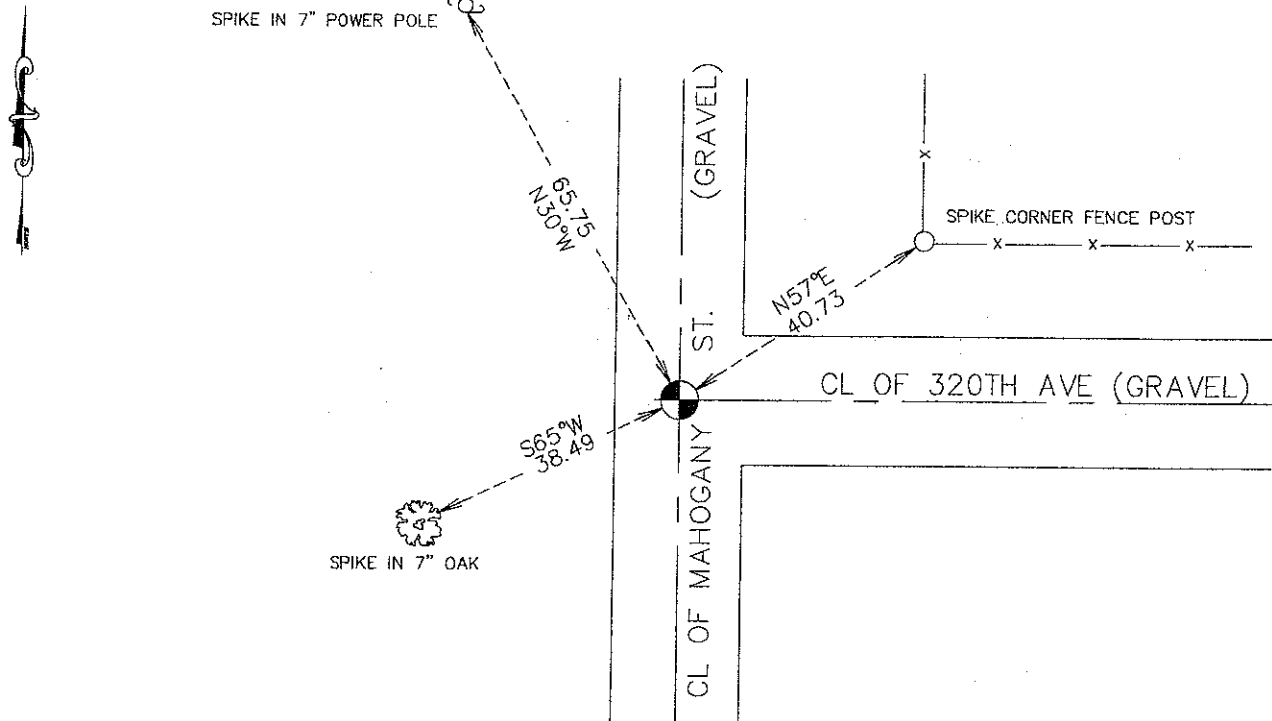
At the corner location shown on the sketch:  
 FOUND INSCRIBED GREEN ROCK SET BY JOHN NELSON AND  
 SET A #7 REBAR WITH AN ALUMINUM CAP

Kanabec County U.S. Survey Feet Coordinates  
 NAD 1983, HARN 1996 Adjustment  
 Obtained by RTK GPS Observation

Northing= 218344.895  
 Easting= 407627.362

Note: NAD 1983, HARN 1996 Adjustment  
 coordinates are NOT compatible with  
 NAD 1983 coordinates  
 Note: 1 Meter=3937/1200 U.S. Survey Feet

### SKETCH OF REFERENCE TIES



Statement of evidence relative to this corner location is on back of page.

I hereby certify that this document and the data contained herein was prepared by me or under my direct supervision.

*Ernest [Signature]*  
 Signature

12-21-2011  
 Date

Registration No. 98008

- Land Surveyor,       Professional Engineer  
 County Surveyor,     County Engineer

### OFFICE OF THE COUNTY RECORDER

County of \_\_\_\_\_

I hereby certify that this document was filed in the County Recorder's office at \_\_\_\_\_ M. on the \_\_\_\_\_ day of \_\_\_\_\_ A.D., 20\_\_\_\_

County Recorder \_\_\_\_\_

BY \_\_\_\_\_ Deputy

**DOCUMENT NO.** \_\_\_\_\_

NE CORNER, SEC. 8, T41, R23

**STATEMENT OF EVIDENCE**

**THE ORIGINAL CORNER WAS SET BY DEPUTY SURVEYOR ON OCTOBER 13, 1851 AND 4 BEARING TREES NOTED AS:**

**6" BALSAM @ 5 LINKS BEARING S49°W**

**12" ASPEN @ 43 LINKS BEARING S71°E**

**NO VISIBLE EVIDENCE COULD BE FOUND FOR THE ORIGINAL CORNER OR BEARING TREES.**

**IN BOOK 1 OF 2BOOKS, PAGE 19, JOHN NELSON RECORDED A SURVEY DATED NOVEMBER 3, 1902 FOR A ROAD ALONG THE EAST LINES OF SEC. 5, 8, 17 AND 20. JOHN NELSON ESTABLISHED THE NE CORNER OF SEC. 8 AND NOTED 2 BEARING TREES AS:**

**20" PINE STUMP @ 38 LINKS BEARING N79°30'E**

**14" WHITE BIRCH @ 91.5 LINKS BEARING S27°30'W**

**IN 2001, E.G. RUD AND SONS RAN A SURVEY ALONG THIS LINE AND EXCAVATED AT THIS INTERSECTION. 2 FEET BELOW THE SURFACE A GREEN ROCK WITH AN "X" AND THE SEC. NOS. 4, 5, 8 AND 9 INSCRIBED IN THE PROPER QUADRANTS. ON THE SIDES T41 AND R23 WERE INSCRIBED ON OPPOSITE SIDES. A #7 REBAR WITH AN ALUMINUM CAP WAS SET, TIES WERE TAKEN AND KANABEC COUNTY COORDINATES WERE ESTABLISHED ON THIS POSITION.**