

# CERTIFICATE OF LOCATION OF GOVERNMENT CORNER

East Quarter corner of Section 8, Township 41 North, Range 23 West,  
4th Principal Meridian, Kanabec County, State of Minnesota

At the corner location shown on the sketch:  
On 4/26/2022, set a 1/2" x 14" Iron Rebar with plastic cap marked KROSCHER 44490.

Kanabec County U.S. Survey Feet Coordinates  
NAD 1983, HARN 1996 Adjustment  
Obtained by RTK GPS observation  
Northing: 215699.8466  
Easting: 407614.8935

Note: NAD 1983, HARN 1996 Adjustment coordinates are NOT compatible with NAD 1983 coordinates  
Note: 1 Meter = 3937/1200 U.S. Survey Feet

## SKETCH OF REFERENCE TIES

NOT TO SCALE

DISTANCE UNITS FOR THIS DRAWING IS  
U.S. SURVEY FEET

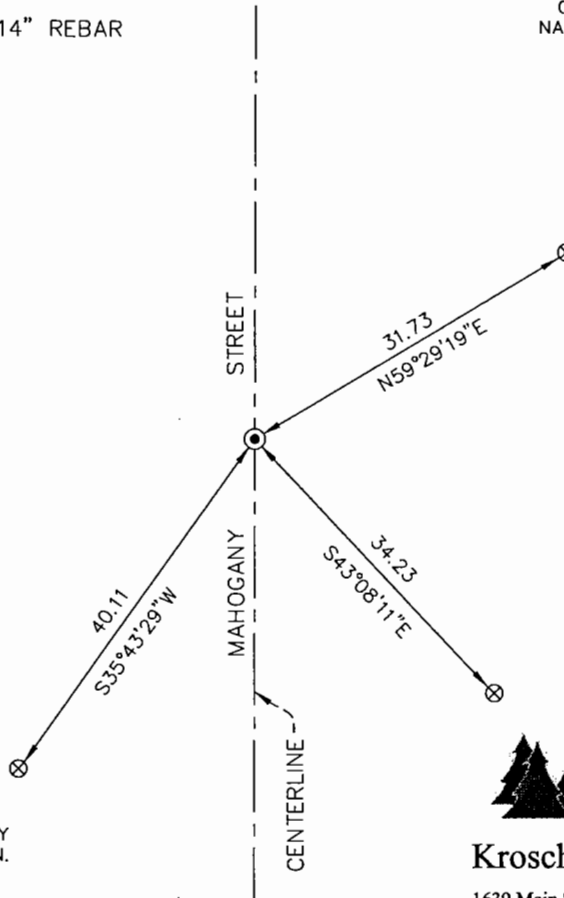
THE BASIS OF BEARINGS FOR THIS  
DRAWING IS THE KANABEC COUNTY  
COORDINATE SYSTEM BY MNDOT,  
NAD 1983, HARN 1996 ADJUSTMENT



⊗ DENOTES SET 1/2" x 14" REBAR

SECTION 8

SECTION 9

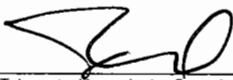


KROSCHER LAND SURVEYORS, INC.  
ASSUMES NO LIABILITY FOR THE ACCURACY  
OF THE GPS COORDINATES SHOWN HEREON.  
ALL COORDINATES AND DIMENSIONS  
SHOULD BE FIELD VERIFIED BY THE USER.

**Kroschel Land Surveyors, Inc.**  
1639 Main Street North, Suite 6, Pine City, MN 55063  
Phone: 320-629-3267 Fax: 320-629-0176

Statement of evidence relative to this corner location is on back of page.

I hereby certify that this report was prepared by me or under my direct supervision, that the United States public land survey monument record is correct and complete to the best of my knowledge and belief, and that I am a duly Licensed Land Surveyor under the laws of the State of Minnesota.

  
Tyler J. Kroschel, County Surveyor  
License No. 44490

2-9-2023  
Date

**OFFICE OF THE COUNTY RECORDER**  
County of Kanabec

I hereby certify that this document was filed in the County Recorder's office at \_\_\_\_\_ .M. on the \_\_\_\_\_ day of \_\_\_\_\_ A.D., 20\_\_\_\_  
County Recorder \_\_\_\_\_, Deputy

DOCUMENT NO. \_\_\_\_\_

Statement of Evidence:

In November of 1851, Deputy Surveyor John M. Gay set a post to mark the East Quarter Corner of Section 8, Township 41 North, Range 23 West, 4th Principal Meridian.

Reference ties were taken to:

6 inch Maple at North 15 degrees West a distance of 18 links  
12 inch Aspen at South 65 degrees East a distance of 3 links

All of the original Government corner evidence was searched for. None was found.

1902- County Surveyor John Nelson made a survey for a road along the East line of Section 8, per Book 1 of 2 of Surveys, P.19 on file at the County Highway Department. Nelson's survey shows he measured a distance of 5291.22 feet along the East line of Section 8. I measure 5288.37 feet. Nelson's survey does not show any information at the East Quarter corner of Section 8.

In March 2022, I made a survey around Section 9, Township 41 North, Range 23 West, 4th Principal Meridian for Jay Waldman to locate existing monuments, lines of occupation and establish search areas.

On 4/26/2022, I made a search with a metal locator at the centerline of the Township Road and halfway between the Northeast and Southeast corners of Section 8. No evidence of the corner was found in the search. I determined the corner lost and placed a 1/2" x 14" Iron Rebar with a plastic cap marked KROSCHEL 44490 on-line and halfway between the Northeast and Southeast corners of Section 8. Established reference ties and assigned Kanabec County Coordinates.

This position was determined to be the best available evidence of the original corner monument location. No excavation search was made at this location.