

CERTIFICATE OF LOCATION OF GOVERNMENT CORNER

NORTH QUARTER Corner of Section 16, Township 41, Range 23, 4TH P.M.

STATE OF MINNESOTA, County of KANABEC

At the corner location shown on the sketch:

FOUND THIS MONUMENT
AND ESTABLISHED KANABEC COUNTY COORDINATES ON ITS LOCATION.

Kanabec County U.S. Survey Feet Coordinates
NAD 1983, HARN 1996 Adjustment
Obtained by RTK GPS Observation

Northing= 213011.51

Easting= 410234.70

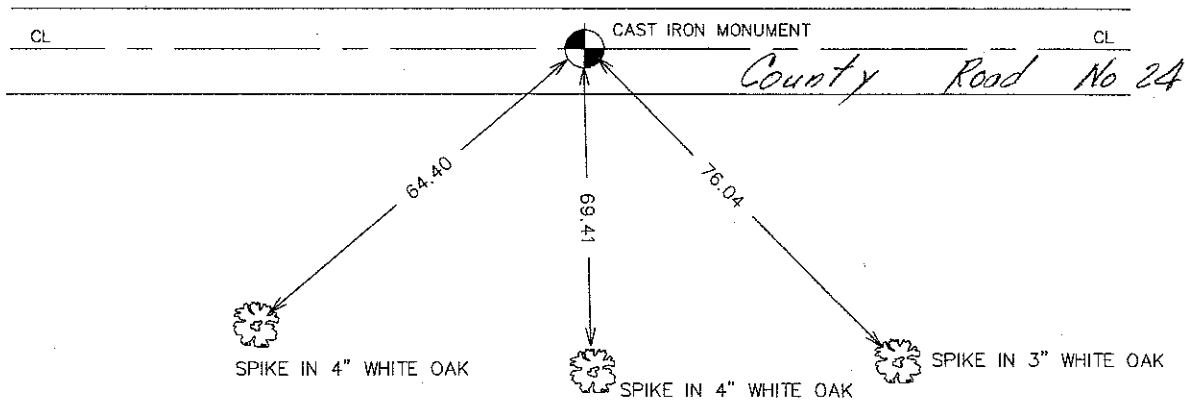
Note: NAD 1983, HARN 1996 Adjustment
coordinates are NOT compatible with
NAD 1983 coordinates

Note: 1 Meter=3937/1200 U.S. Survey Feet

SKETCH OF REFERENCE TIES



TIES ARE TO A SPK. IN
BLAZE IN NEAR FACE



Statement of evidence relative to this corner location is on back of page.

I hereby certify that this document and the data contained herein was prepared by me or under my direct supervision.

Ernest J. Reed 11-25-2007
Signature Date

Registration No. 9808

- Land Surveyor, Professional Engineer
 County Surveyor, County Engineer

OFFICE OF THE COUNTY RECORDER

County of _____

I hereby certify that this document was filed in the County Recorder's office at _____ M. on the _____ day of _____ A.D., 20____

County Recorder _____

BY _____ Deputy

DOCUMENT NO. _____

NORTH QUARTER CORNER SECTION 16, T41, R23

STATEMENT OF EVIDENCE

M.B. RUDE SET MONUMENT FROM HIS SURVEY OF COUNTY ROAD NUMBER 24. PLACE OF MONUMENT FIT CENTERLINE OF EAST-WEST ROAD GOOD AND OCCUPATION LINE NORTH-SOUTH.

IN 2001 E.G. RUD AND SONS FOUND THIS CAST IRON MONUMENT AND ESTABLISHED KANABEC COUNTY COORDINATES ON THIS POSITION.