

# CERTIFICATE OF LOCATION OF GOVERNMENT CORNER

NORTHEAST Corner of Section 17, Township 41, Range 23, 4TH P.M.  
 STATE OF MINNESOTA, County of KANABEC

At the corner location shown on the sketch:

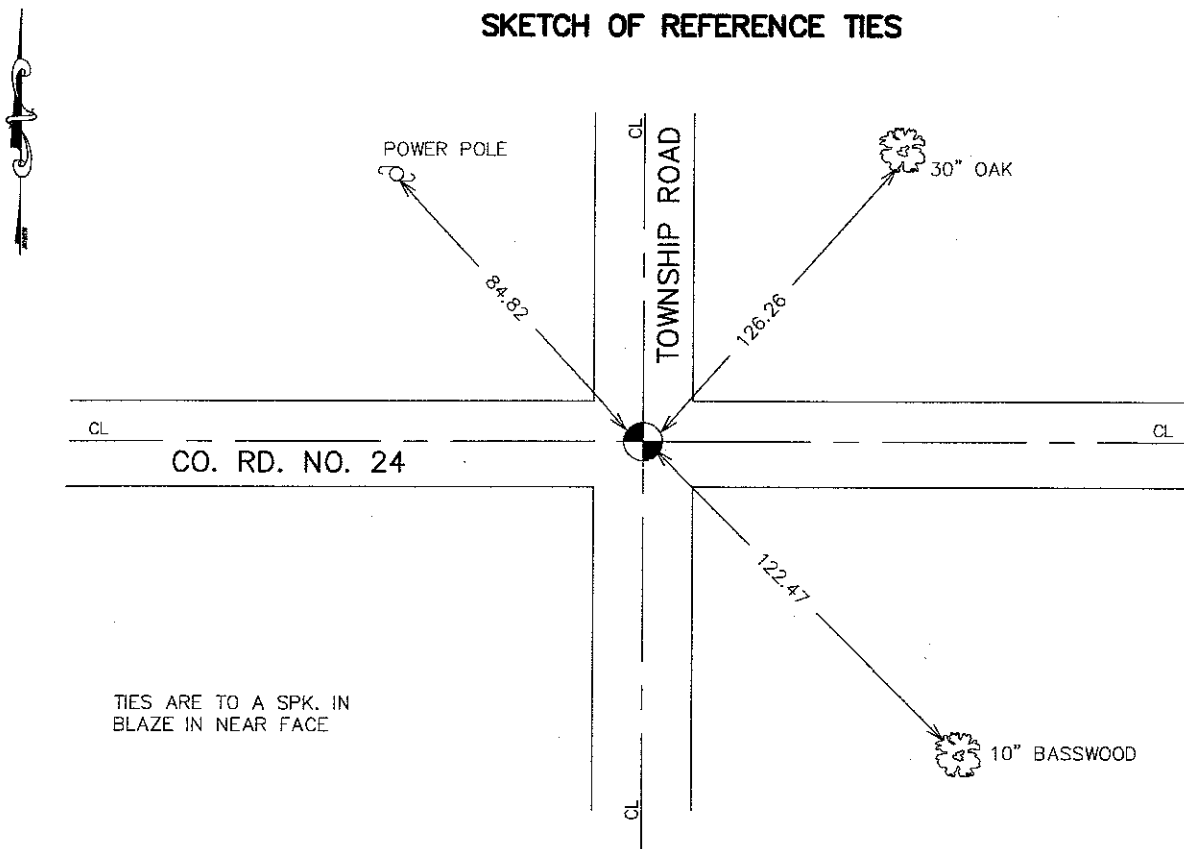
FOUND THIS MONUMENT  
 AND ESTABLISHED KANABEC COUNTY COORDINATES ON ITS LOCATION.

Kanabec County U.S. Survey Feet Coordinates  
 NAD 1983, HARN 1996 Adjustment  
 Obtained by RTK GPS Observation

Northing= 213055.69  
 Easting= 407602.31

Note: NAD 1983, HARN 1996 Adjustment  
 coordinates are NOT compatible with  
 NAD 1983 coordinates  
 Note: 1 Meter=3937/1200 U.S. Survey Feet

## SKETCH OF REFERENCE TIES



TIES ARE TO A SPK. IN  
 BLAZE IN NEAR FACE

Statement of evidence relative to this corner location is on back of page.

I hereby certify that this document and the data  
 contained herein was prepared by me or under  
 my direct supervision.

Ernest J. Rud 11-25-2007  
 Signature Date

Registration No. 9808

- Land Surveyor,  Professional Engineer  
 County Surveyor,  County Engineer

### OFFICE OF THE COUNTY RECORDER

County of \_\_\_\_\_

I hereby certify that this document was filed in  
 the County Recorder's office at \_\_\_\_\_ M. on the  
 \_\_\_\_\_ day of \_\_\_\_\_ A.D., 20\_\_\_\_

County Recorder \_\_\_\_\_

BY \_\_\_\_\_ Deputy

DOCUMENT NO. \_\_\_\_\_

NORTHEAST CORNER SECTION 17, T41, R23

**STATEMENT OF EVIDENCE**

IN 1975, THIS CORNER WAS LOCATED AND A CORNER CERTIFICATE WAS FILED.

THIS CORNER WAS REMOVED IN ROAD CONSTRUCTION AND RESET BY THE COUNTY HIGHWAY DEPARTMENT, BUT NO NEW CERTIFICATE WAS FILED.

IN OCTOBER OF 1990, M.B. RUDE FOUND THE CAST IRON MONUMENT THAT WAS RESET BY THE COUNTY HIGHWAY DEPARTMENT AND VERIFIED ITS LOCATION AND MADE NEW REFERENCE TIES.

IN 2001 E.G. RUD AND SONS FOUND THIS MONUMENT AND ESTABLISHED KANABEC COUNTY COORDINATES ON THIS POSITION.