

# CERTIFICATE OF LOCATION OF GOVERNMENT CORNER

East quarter Corner of Section 17, Township 41, Range 23, 4th P.M.

STATE OF MINNESOTA, County of KANABEC

At the corner location shown on the sketch:

*Set 1/2" iron pipe with cap*

Kanabec County U.S. Survey Feet Coordinates  
NAD 1983, HARN 1996 Adjustment  
Obtained by RTK GPS Observation

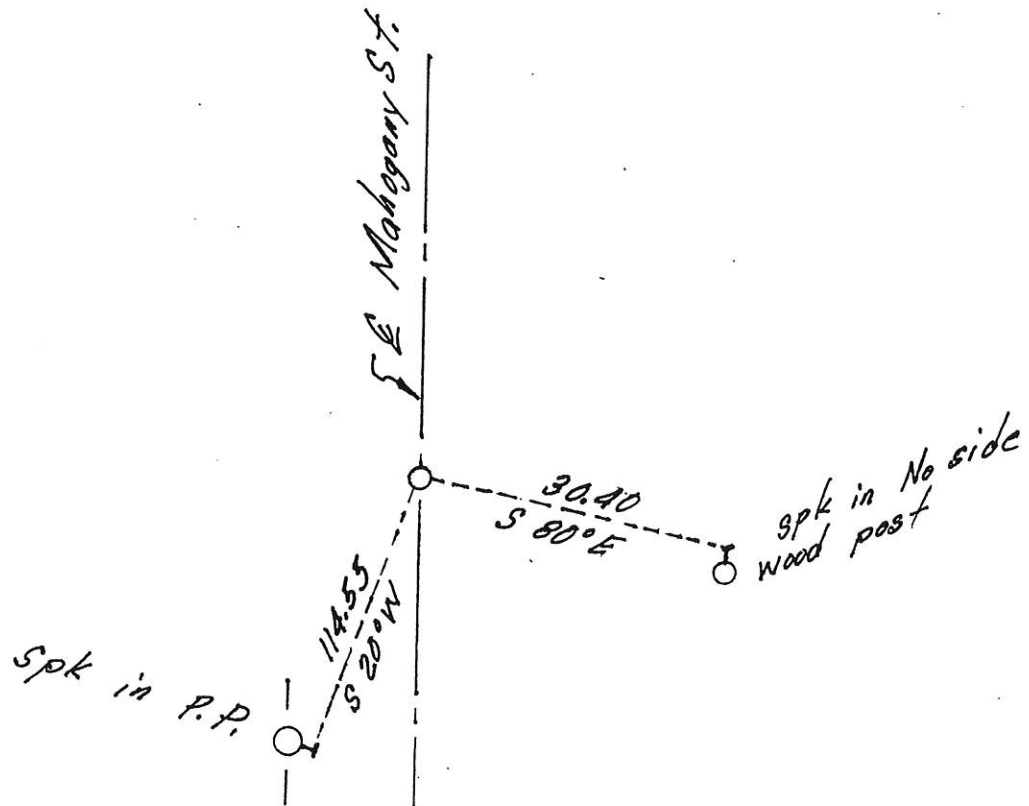
Northing= 210396.96

Easting= 407569.91

Note: NAD 1983, HARN 1996 Adjustment  
coordinates are NOT compatible with  
NAD 1983 coordinates

Note: 1 Meter=3937/1200 U.S. Survey Feet

## SKETCH OF REFERENCE TIES



Statement of evidence relative to this corner location is on back of page.

I hereby certify that this document and the data contained herein was prepared by me or under my direct supervision.

*Ernest L. Rud*  
Signature

12-4-2014  
Date

Registration No. 9808

Land Surveyor,       Professional Engineer

County Surveyor,       County Engineer

## OFFICE OF THE COUNTY RECORDER

County of \_\_\_\_\_

I hereby certify that this document was filed in the County Recorder's office at \_\_\_\_\_ M. on the

\_\_\_\_\_ day of \_\_\_\_\_ A.D., 20\_\_

County Recorder \_\_\_\_\_

BY \_\_\_\_\_ Deputy

DOCUMENT NO. \_\_\_\_\_

## STATEMENT OF EVIDENCE

East Quarter Corner Section 17, Township 41, Range 23

The original government post was set by a deputy surveyor John M. Gley on October 13, 1851 and two bearing trees noted as;

14" Oak bearing South 10° East at 24 Links

12" Elm bearing North 35° West at 129 Links

All original Government corners are now gone.

In 1902, John Nelson made a survey for a Supervisor's Road Order, per records at the County Auditor's Office.

In November 1995, M.B. Rude made a survey along the east line of Section 17, Township 41, Range 23 to locate existing monuments, lines of occupation and establish search areas.

This corner falls in the center line of a north-south Township Road and fence line west.

On November 7, 1995, he made a 2 ½' X 15' X 3' excavation with a backhoe. No evidence of the corner was found in the excavation.

After analyzing all of the available evidence the intersection of the north-south road and fence line west by extended east was accepted as the perpetuated original government corner location.

On November 18, 2014 E.G. Rud & Sons did s survey in Section 16 and could not find this monument. A new corner was set from M.B. Rude's mathematical information and one remaining tie to a power pole. New ties were taken and Kanabec County Coordinates established on this corner.