

CERTIFICATE OF LOCATION OF GOVERNMENT CORNER

EAST QUARTER Corner of Section 20, Township 41, Range 23, 4TH P.M.

STATE OF MINNESOTA, County of KANABEC

At the corner location shown on the sketch:
 FOUND CAST IRON MONUMENT.

Kanabec County U.S. Survey Feet Coordinates
 NAD 1983, HARN 1996 Adjustment
 Obtained by RTK GPS Observation

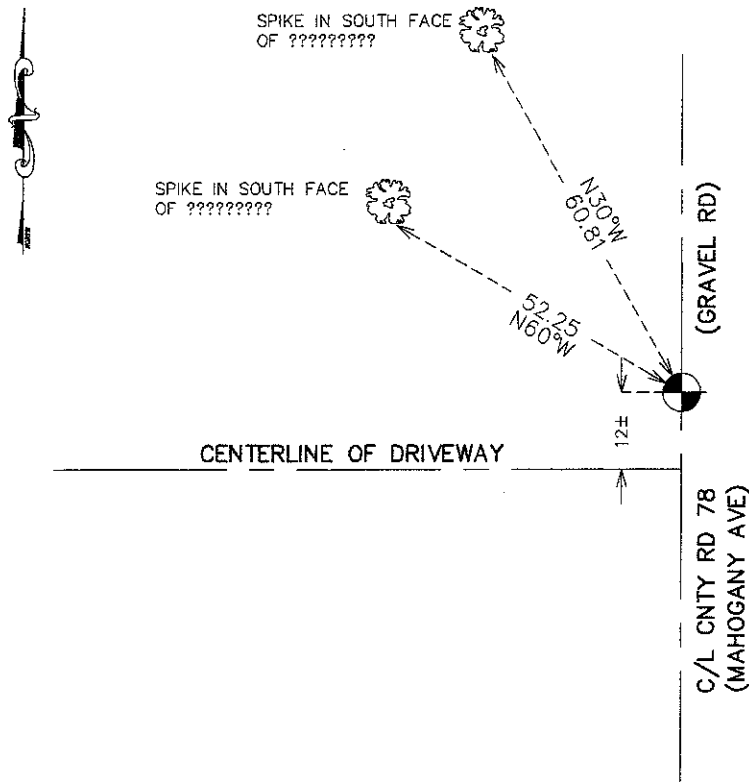
Northing= 205103.57

Easting= 407540.53

Note: NAD 1983, HARN 1996 Adjustment
 coordinates are NOT compatible with
 NAD 1983 coordinates

Note: 1 Meter=3937/1200 U.S. Survey Feet

SKETCH OF REFERENCE TIES



Statement of evidence relative to this corner location is on back of page.

I hereby certify that this document and the data contained herein was prepared by me or under my direct supervision.

Ernest Rud
 Signature

7-18-2011
 Date

Registration No. 9800

Land Surveyor, Professional Engineer
 County Surveyor, County Engineer

OFFICE OF THE COUNTY RECORDER

County of _____

I hereby certify that this document was filed in the County Recorder's office at _____ M. on the _____ day of _____ A.D., 20 _____

County Recorder _____

BY _____ Deputy

DOCUMENT NO. _____

E1/4 CORNER, SEC. 20, T41, R23

STATEMENT OF EVIDENCE

THE ORIGINAL GOVERNMENT POST WAS SET BY A DEPUTY SURVEYOR JOHN M. GLEY ON OCT. 13, 1851 AND 2 BEARING TREES NOTED AS:

30" PINE @ 16 LINKS BEARING S38°W

12" MAPLE @ 54 LINKS BEARING N62°E

NO VISIBLE EVIDENCE REMAINS FOR THE POST OR BEARING TREES TODAY.

ON APRIL 29, 1977 M.B. SET A CAST IRON MONUMENT IN THE CENTERLINE OF NORTH-SOUTH HIGHWAY AND FENCE LINE WEST EXTENDED EAST.

THIS CORNER FALLS IN A CUT SECTION OF THE HIGHWAY SO ALL THE EVIDENCE OF THE ORIGINAL CORNER WAS REMOVED IN THE HIGHWAY CONSTRUCTION.

DOERING BROS, A LIFELONG RESIDENT IN THE AREA, STATED THAT THE FENCE LINE HAS BEEN REBUILT IN ITS SAME LOCATION AND HAS BEEN ACCEPTED AS BEING ON THE QUARTER LINE.

THIS LOCATION IS ABOUT 12 FEET NORTH OF A SPLIT BETWEEN THE NW AND SW CORNERS

ON APR. 19, 2011 E.G. RUD AND SONS, INC. FOUND THIS MONUMENT, TOOK NEW TIES AND KANABEC COUNTY COORDINATES WERE ESTABLISHED ON THIS POSITION.