

CERTIFICATE OF LOCATION OF GOVERNMENT CORNER

NORTH QUARTER Corner of Section 28, Township 41, Range 23, 4TH P.M.

STATE OF MINNESOTA, County of KANABEC

At the corner location shown on the sketch:
FOUND CAST IRON MONUMENT.

Kanabec County U.S. Survey Feet Coordinates
NAD 1983, HARN 1996 Adjustment
Obtained by RTK GPS Observation

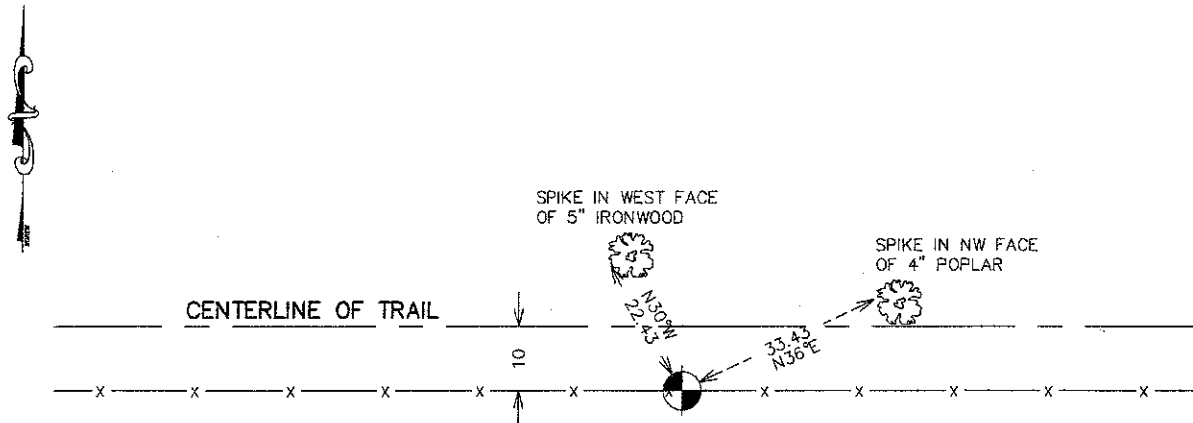
Northing= 202437.20

Easting= 410165.06

Note: NAD 1983, HARN 1996 Adjustment
coordinates are NOT compatible with
NAD 1983 coordinates

Note: 1 Meter=3937/1200 U.S. Survey Feet

SKETCH OF REFERENCE TIES



Statement of evidence relative to this corner location is on back of page.

I hereby certify that this document and the data contained herein was prepared by me or under my direct supervision.

Ernest J. Rud
Signature

7-18-2011
Date

Registration No. 9808

Land Surveyor, Professional Engineer

County Surveyor, County Engineer

OFFICE OF THE COUNTY RECORDER

County of _____

I hereby certify that this document was filed in the County Recorder's office at _____ M. on the

_____ day of _____ A.D., 20____

County Recorder _____

BY _____ Deputy

DOCUMENT NO. _____

N1/4 CORNER, SEC. 28, T41, R23

STATEMENT OF EVIDENCE

THE ORIGINAL GOVERNMENT POST WAS SET BY A DEPUTY SURVEYOR JOHN M. GLEY ON OCT. 13, 1851 AND 2 BEARING TREES NOTED AS:

6" BIRCH @ 12 LINKS BEARING N5°W

10" BIRCH @ 18 LINKS BEARING S23°E

NO VISIBLE EVIDENCE REMAINS FOR THE POST OR BEARING TREES TODAY.

THERE IS A VERY OLD EAST-WEST FENCE THAT HAS BEEN ACCEPTED AS THE SECTION LINE. THIS FENCE RUNS FROM A POINT ABOUT 700 FEET EAST OF THE CORNER, WEST TO THE NW CORNER OF SEC. 28

THERE ARE NO NORTH-SOUTH FENCE LINE OR LINES OF OCCUPATION IN THE AREA..

ON MAY 13, 1977 M.B. RUDE ACCEPTED THE OLD FENCE LINE EAST-WEST AS THE BEST AVAILABLE EVIDENCE OF THE NORTH-SOUTH POSITION AND SET A CAST ALUMINUM MONUMENT AND STEEL FENCE POST ON THE EAST-WEST FENCE AT A PROPORTIONAL MEASUREMENT BETWEEN THE NW AND NE CORNERS OF SEC. 28.

ON APR. 19, 2011 E.G. RUD AND SONS, INC. FOUND THIS MONUMENT, TOOK NEW TIES AND KANABEC COUNTY COORDINATES WERE ESTABLISHED ON THIS POSITION.