

CERTIFICATE OF LOCATION OF GOVERNMENT CORNER

EAST QUARTER Corner of Section 29, Township 41, Range 23, 4TH P.M.

STATE OF MINNESOTA, County of KANABEC

At the corner location shown on the sketch:
FOUND CAST IRON MONUMENT DOWN 9" IN GRAVEL ROAD

Kanabec County U.S. Survey Feet Coordinates
NAD 1983, HARN 1996 Adjustment
Obtained by RTK GPS Observation

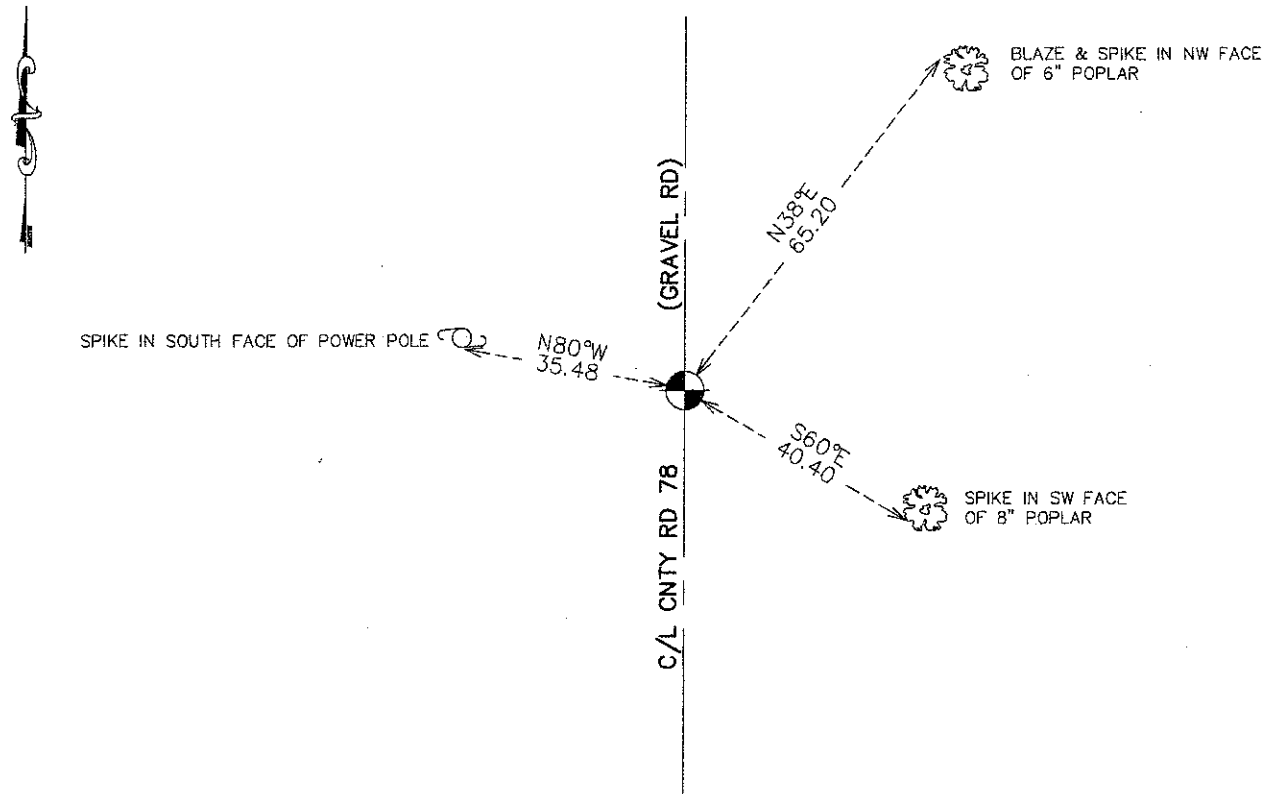
Northing= 199799.84

Easting= 407512.64

Note: NAD 1983, HARN 1996 Adjustment coordinates are NOT compatible with NAD 1983 coordinates

Note: 1 Meter=3937/1200 U.S. Survey Feet

SKETCH OF REFERENCE TIES



Statement of evidence relative to this corner location is on back of page.

I hereby certify that this document and the data contained herein was prepared by me or under my direct supervision.

Ernest J. Rud 7-18-2011
Signature Date

Registration No. 9808

- Land Surveyor, Professional Engineer
- County Surveyor, County Engineer

OFFICE OF THE COUNTY RECORDER

County of _____

I hereby certify that this document was filed in the County Recorder's office at _____ M. on the _____ day of _____ A.D., 20_____

County Recorder _____

BY _____ Deputy

DOCUMENT NO. _____

E1/4 CORNER, SEC. 29, T41, R23

STATEMENT OF EVIDENCE

THE ORIGINAL GOVERNMENT POST WAS SET BY A DEPUTY SURVEYOR JOHN M. GLEY ON OCT. 13, 1851 AND 1 BEARING TREES NOTED AS:

9" ASPEN @ 40 LINKS BEARING N80°E

8" ASPEN @ 38 LINKS BEARING N54°W

NO VISIBLE EVIDENCE REMAINS FOR THE POST OR BEARING TREES TODAY.

JOHN NELSON, COUNTY SURVEYOR IN 1902, MADE A ROAD SURVEY, SURVEY RECORDS BOOK 2, PAGE 17-

36" PINE @ 1.1 CHAIN BEARING N19°E

28" DRY PINE @ 1.48 CHAINS BEARING S26.5°W

THESE TIES ARE NOW GONE.

ON APRIL 26, 1977 M.B. RUDE MADE AN EXCAVATION WITH THE COUNTY BACKHOE IN THE CENTER OF THE N-S HIGHWAY AND A FENCE LINE WEST EXTENDED EAST.

THE EXCAVATION WAS 15 FEET WIDE EAST-WEST, 20 FEET LONG NORTH-SOUTH, 3 FEET DEEP 1 FOOT INTO NATURAL GROUND. NO EVIDENCE WAS FOUND IN THE EXCAVATION.

HE BACKFILLED THE EXCAVATION AND SET A CAST IRON MONUMENT IN THE CENTERLINE OF THE COUNTY HIGHWAY AND FENCE LINE WEST EXTENDED EAST.

THIS LOCATION FITS WELL WITH THE PROPORTIONAL MEASUREMENT LOCATION USED BY JOHN NELSON IN 1902.

ON APR. 19, 2011 E.G. RUD AND SONS, INC. FOUND THIS MONUMENT, TOOK NEW TIES AND KANABEC COUNTY COORDINATES WERE ESTABLISHED ON THIS POSITION.