

CERTIFICATE OF LOCATION OF GOVERNMENT CORNER

NORTH QUARTER Corner of Section 33, Township 41, Range 23, 4TH P.M.

STATE OF MINNESOTA, County of KANABEC

At the corner location shown on the sketch:
FOUND CAST IRON MONUMENT AT FENCE INTERSECTION

Kanabec County U.S. Survey Feet Coordinates
NAD 1983, HARN 1996 Adjustment
Obtained by RTK GPS Observation

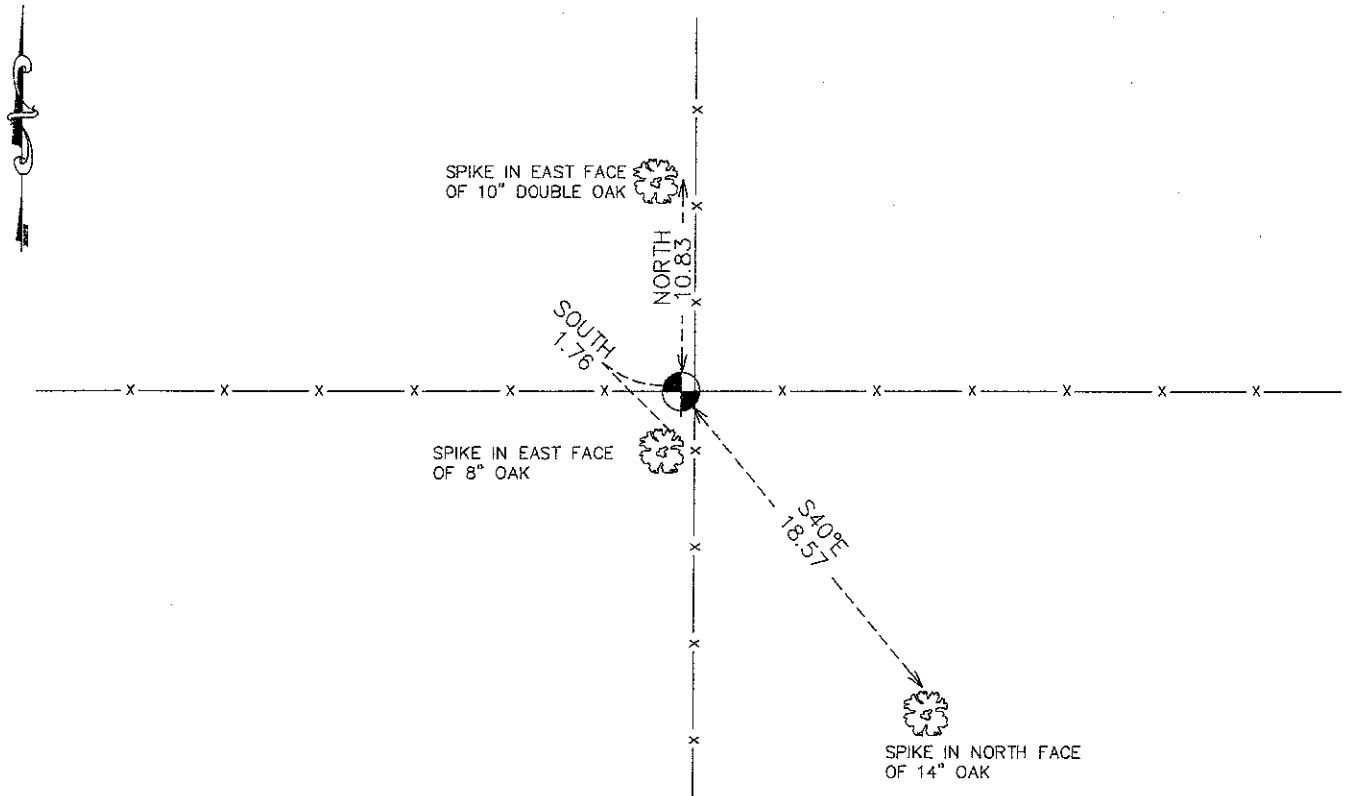
Northing= 197123.076

Easting= 410129.566

Note: NAD 1983, HARN 1996 Adjustment
coordinates are NOT compatible with
NAD 1983 coordinates

Note: 1 Meter=3937/1200 U.S. Survey Feet

SKETCH OF REFERENCE TIES



Statement of evidence relative to this corner location is on back of page.

I hereby certify that this document and the data contained herein was prepared by me or under my direct supervision.

Ernest Rud 7-18-2011
Signature Date

Registration No. 9808

- Land Surveyor, Professional Engineer
- County Surveyor, County Engineer

OFFICE OF THE COUNTY RECORDER

County of _____

I hereby certify that this document was filed in the County Recorder's office at _____ M. on the

_____ day of _____ A.D., 20____

County Recorder _____

BY _____ Deputy

DOCUMENT NO. _____

N1/4 CORNER, SEC. 33, T41, R23

STATEMENT OF EVIDENCE

THE ORIGINAL GOVERNMENT POST WAS SET BY A DEPUTY SURVEYOR JOHN M. GLEY ON OCT. 13, 1851 AND 1 BEARING TREES NOTED AS:

10" BIRCH @ 9 LINKS BEARING N4°W

NO VISIBLE EVIDENCE REMAINS FOR THE POST OR BEARING TREES TODAY.

M.B. RUDE SET A CAST IRON MONUMENT IN A RE-SURVEY OF SEC. 33 BY LINES OF OCCUPATION. HE MADE AN EXCAVATION AT CORNER LOCATION BUT FOUND NO EVIDENCE OF ORIGINAL CORNER OR BEARING TREE. HE SET THE CORNER AT THE SW SIDE OF OLD CORNER FENCE POST. LINE AND SPLIT BETWEEN NW AND NE CORNERS FALLS 0.77 FEET SOUTH AND 2.2 FEET WEST OF LOCATION.

ON APR. 19, 2011 E.G. RUD AND SONS, INC. FOUND THIS MONUMENT, TOOK NEW TIES AND KANABEC COUNTY COORDINATES WERE ESTABLISHED ON THIS POSITION.