

CERTIFICATE OF LOCATION OF GOVERNMENT CORNER

NORTHEAST Corner of Section 32, Township 41, Range 23, 4TH P.M.

STATE OF MINNESOTA, County of KANABEC

At the corner location shown on the sketch:
FOUND CAST ALUMINUM MONUMENT DOWN 9 INCHES

Kanabec County U.S. Survey Feet Coordinates
NAD 1983, HARN 1996 Adjustment
Obtained by RTK GPS Observation

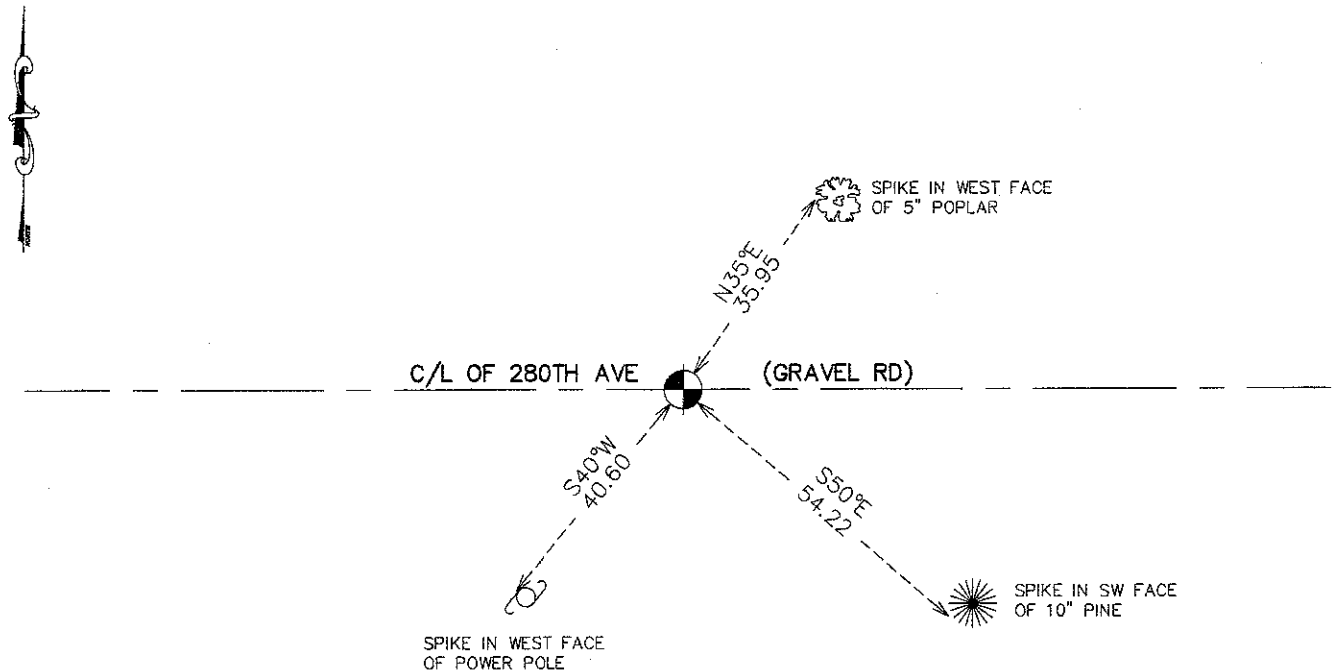
Northing= 197156.10

Easting= 407472.37

Note: NAD 1983, HARN 1996 Adjustment
coordinates are NOT compatible with
NAD 1983 coordinates

Note: 1 Meter=3937/1200 U.S. Survey Feet

SKETCH OF REFERENCE TIES



Statement of evidence relative to this corner location is on back of page.

I hereby certify that this document and the data contained herein was prepared by me or under my direct supervision.

Ernest Blud
Signature

7-18-2011
Date

Registration No. 9808

Land Surveyor, Professional Engineer

County Surveyor, County Engineer

OFFICE OF THE COUNTY RECORDER

County of _____

I hereby certify that this document was filed in the County Recorder's office at _____ M. on the

_____ day of _____ A.D., 20____

County Recorder _____

BY _____ Deputy

DOCUMENT NO. _____

NE CORNER, SEC. 32, T41, R23

STATEMENT OF EVIDENCE

THE ORIGINAL GOVERNMENT POST WAS SET BY A DEPUTY SURVEYOR JOHN M. GLEY ON OCT. 13, 1851 AND 2 BEARING TREES NOTED AS:

6" ASPEN @ 27 LINKS BEARING N4°E

5" ASPEN @ 26 LINKS BEARING N21°W

NO VISIBLE EVIDENCE REMAINS FOR THE POST OR BEARING TREES TODAY.

THERE ARE NO FENCE LINES OR LINES OF OCCUPATION IN THE AREA.

ON OCT. 3, 1973 M.B. RUDE FOUND A LARGE SPIKE AT THE INTERSECTION OF ROADS RUNNING EAST, NORTH AND WEST AND A FENCE LINE SUNNING SOUTH. HE ACCEPTED THIS LOCATION AS BEING THE BEST EVIDENCE FOR THE PERPETUATION OF THIS CORNER AND SET A CAST ALUMINUM MONUMENT AND TOOK TIES AND RECORDED CERTIFICATE OF LOCATION NO. 294.

ON APR. 19, 2011 E.G. RUD AND SONS, INC. FOUND THIS MONUMENT 9 INCHES BELOW THE SURFACE AND IN GOOD SHAPE, TOOK NEW TIES AND KANABEC COUNTY COORDINATES WERE ESTABLISHED ON THIS POSITION.