

# CERTIFICATE OF LOCATION OF GOVERNMENT CORNER

EAST QUARTER Corner of Section 32, Township 41, Range 23, 4TH P.M.

STATE OF MINNESOTA, County of KANABEC

At the corner location shown on the sketch:

FOUND CAST ALUMINUM MONUMENT

Kanabec County U.S. Survey Feet Coordinates  
NAD 1983, HARN 1996 Adjustment  
Obtained by RTK GPS Observation

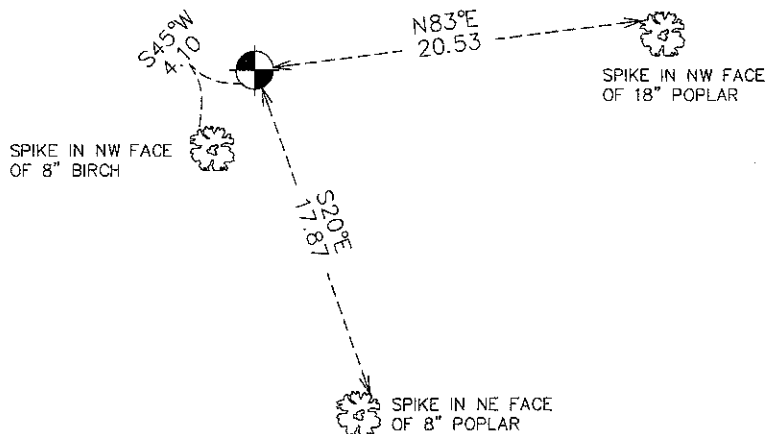
Northing= 194517.56

Easting= 407396.42

Note: NAD 1983, HARN 1996 Adjustment  
coordinates are NOT compatible with  
NAD 1983 coordinates

Note: 1 Meter=3937/1200 U.S. Survey Feet

## SKETCH OF REFERENCE TIES



Statement of evidence relative to this corner location is on back of page.

I hereby certify that this document and the data contained herein was prepared by me or under my direct supervision.

Ernst Rud 7-18-2011  
Signature Date

Registration No. 9808

- Land Surveyor,     Professional Engineer
- County Surveyor,     County Engineer

### OFFICE OF THE COUNTY RECORDER

County of \_\_\_\_\_

I hereby certify that this document was filed in the County Recorder's office at \_\_\_\_\_ M. on the

\_\_\_\_\_ day of \_\_\_\_\_ A.D., 20\_\_

County Recorder \_\_\_\_\_

BY \_\_\_\_\_ Deputy

DOCUMENT NO. \_\_\_\_\_

E1/4 CORNER, SEC. 32, T41, R23

**STATEMENT OF EVIDENCE**

**THE ORIGINAL GOVERNMENT POST WAS SET BY A DEPUTY SURVEYOR JOHN M. GLEY ON OCT. 13, 1851 AND 2 BEARING TREES NOTED AS:**

**20" PINE @ 15 LINKS BEARING S45°E**

**20" PINE @ 12 LINKS BEARING N77°W**

**NO VISIBLE EVIDENCE REMAINS FOR THE POST OR BEARING TREES TODAY.**

**THERE ARE NO FENCE LINES OR LINES OF OCCUPATION IN THE AREA.**

**IN NOV. 1973, M.B. RUDE FOUND A LARGE SPIKE AT AN OLD ESTABLISHED FENCE CORNER. M.B. ACCEPTED THIS LOCATION AS BEING THE BEST EVIDENCE FOR THE PERPETUATION OF THIS CORNER AND SET A CAST ALUMINUM MONUMENT AND TOOK TIES.**

**ON APR. 19, 2011 E.G. RUD AND SONS, INC. FOUND THIS MONUMENT IN GOOD SHAPE, TOOK NEW TIES AND KANABEC COUNTY COORDINATES WERE ESTABLISHED ON THIS POSITION.**