

CERTIFICATE OF LOCATION OF GOVERNMENT CORNER

NORTH QUARTER Corner of Section 10, Township 41, Range 23, 4TH P.M.

STATE OF MINNESOTA, County of KANABEC

At the corner location shown on the sketch:
 On 6/20/2001 Found a 1/2" IRON PIPE #13115 AND 3 POINTED
 ROCKS BELOW.
 Set a KANABEC COUNTY MONUMENT

Kanabec County U.S. Survey Feet Coordinates
 NAD 1983, HARN 1996 Adjustment
 Obtained by RTK GPS Observation

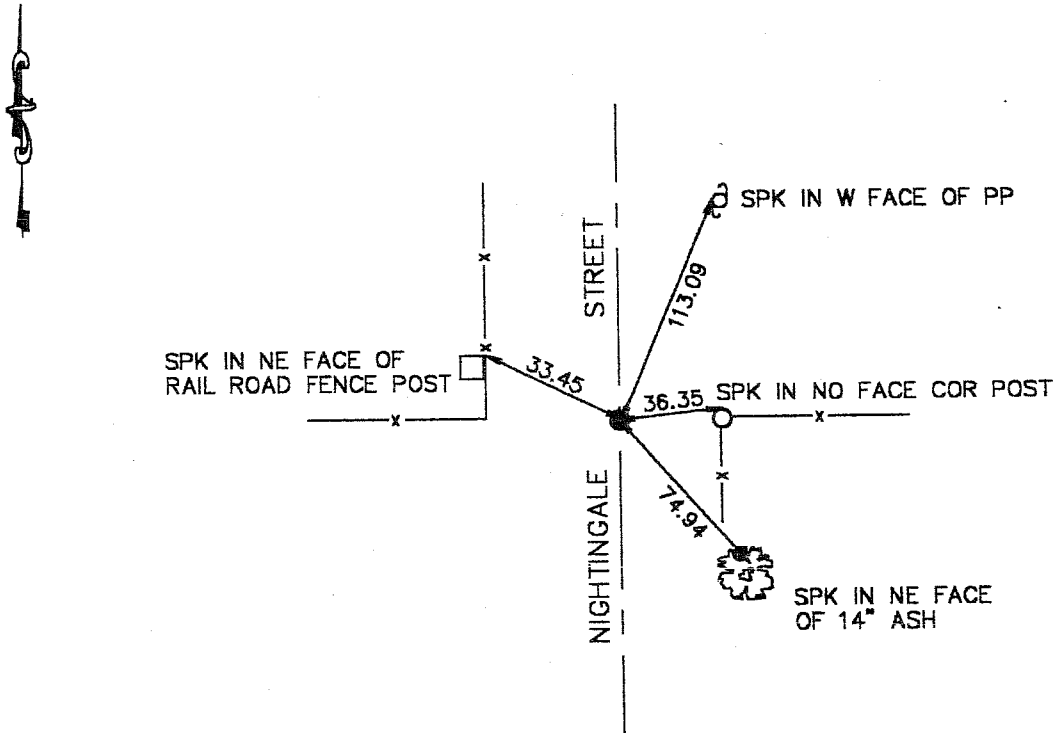
Northing= 218158.490

Easting= 415546.549

Note: NAD 1983, HARN 1996 Adjustment
 coordinates are NOT compatible with
 NAD 1983 coordinates

Note: 1 Meter=3937/1200 U.S. Survey Feet

SKETCH OF REFERENCE TIES



Statement of evidence relative to this corner location is on back of page.

I hereby certify that this document and the data contained herein was prepared by me or under my direct supervision.

Ernest Rud
Signature

10-3-2002
Date

Registration No. 9808

Land Surveyor, Professional Engineer

County Surveyor, County Engineer

OFFICE OF THE COUNTY RECORDER

County of _____

I hereby certify that this document was filed in the County Recorder's office at _____ M. on the

_____ day of _____ A.D., 20__

County Recorder _____

BY _____ Deputy

DOCUMENT NO. _____

STATEMENT OF EVIDENCE

ORIGINAL CORNER WAS SET IN OCT. 1851. NO BEARING TREES REMAINING.

ON JUNE 20, 2001 WE EXCAVATED A HOLE 20' NORTH SOUTH X 10' EAST WEST, FOUND A 1/2" IRON PIPE #13115 ON SURFACE AND BELOW SURFACE, WE FOUND THREE POINTED ROCKS.

FITS OCCUPATION LINES EAST AND WEST. *# E of N-S Road*

SET KANABEC COUNTY MONUMENT AT LOCATION OF IRON PIPE, AND TOOK TIES.