

CERTIFICATE OF LOCATION OF GOVERNMENT CORNER

NORTH QUARTER Corner of Section 15, Township 41, Range 23, 4TH P.M.
 STATE OF MINNESOTA, County of KANABEC

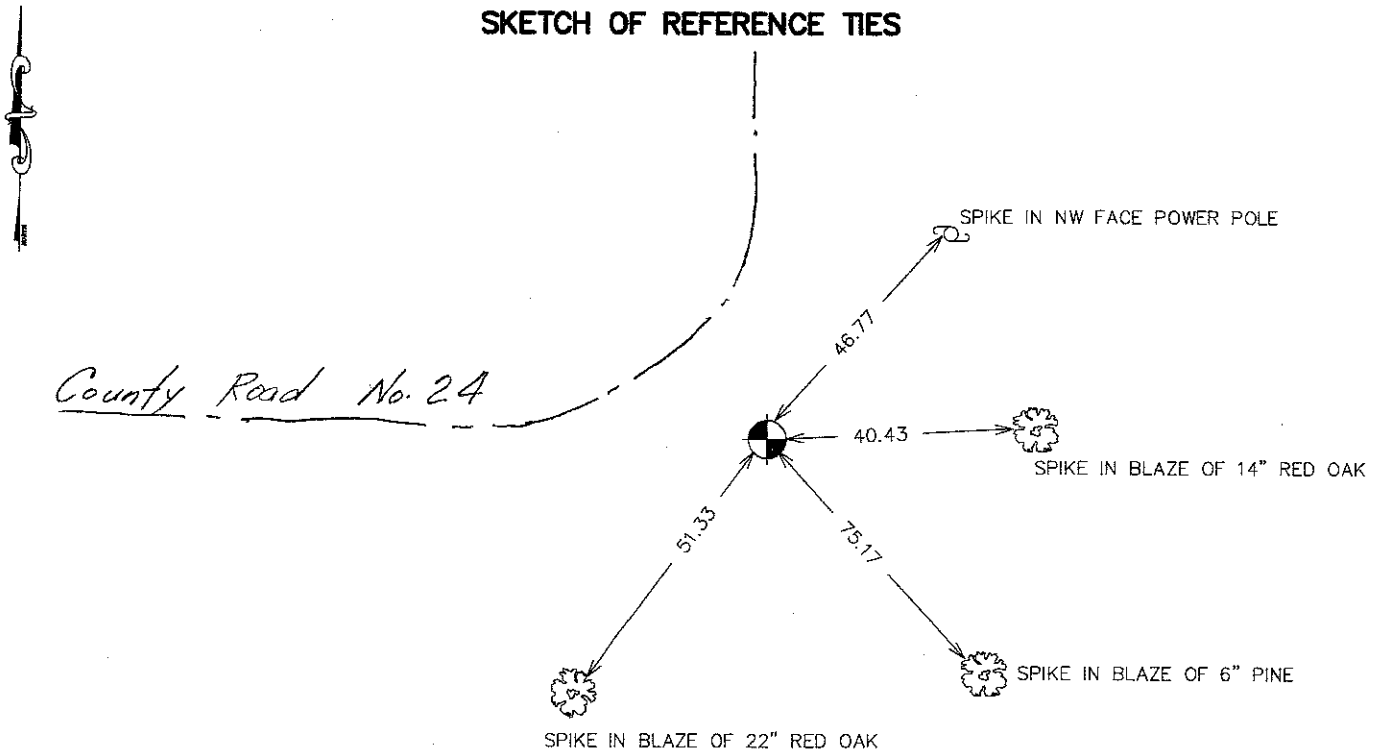
At the corner location shown on the sketch:
 FOUND THIS MONUMENT
 AND ESTABLISHED KANABEC COUNTY COORDINATES ON ITS LOCATION.

Kanabec County U.S. Survey Feet Coordinates
 NAD 1983, HARN 1996 Adjustment
 Obtained by RTK GPS Observation

Northing= 212923.63
 Easting= 415503.98

Note: NAD 1983, HARN 1996 Adjustment
 coordinates are NOT compatible with
 NAD 1983 coordinates
 Note: 1 Meter=3937/1200 U.S. Survey Feet

SKETCH OF REFERENCE TIES



Statement of evidence relative to this corner location is on back of page.

I hereby certify that this document and the data contained herein was prepared by me or under my direct supervision.

Ernest Blud 11-25-2007
Signature Date

Registration No. 9808

Land Surveyor, Professional Engineer
 County Surveyor, County Engineer

OFFICE OF THE COUNTY RECORDER

County of _____

I hereby certify that this document was filed in the County Recorder's office at _____ M. on the _____ day of _____ A.D., 20____

County Recorder _____

BY _____ Deputy

DOCUMENT NO. _____

NORTH QUARTER CORNER SECTION 15, T41, R23

STATEMENT OF EVIDENCE

M.B. RUDE SET MONUMENT FROM HIS SURVEY OF COUNTY ROAD #24. HE FOUND IN HIS SURVEY THAT THE COUNTYS PIN WAS GOOD FOR THE CORNER AS IT FIT OCCUPATION LINE TO THE EAST AND THE CENTERLINE OF THE ROAD TO THE NORTH AND TO THE WEST. POINT FALLS ON THE EDGE OF THE CURVE TO THE EAST.

IN 2001 E.G. RUD FOUND THIS CORNER AND ESTABLISHED KANABEC COUNTY COORDINATES ON ITS POSITION.