

CERTIFICATE OF LOCATION OF GOVERNMENT CORNER

NORTHEAST Corner of Section 16, Township 41, Range 23, 4TH P.M.

STATE OF MINNESOTA, County of KANABEC

At the corner location shown on the sketch:

FOUND THIS MONUMENT
AND ESTABLISHED KANABEC COUNTY COORDINATES ON ITS LOCATION.

Kanabec County U.S. Survey Feet Coordinates
NAD 1983, HARN 1996 Adjustment
Obtained by RTK GPS Observation

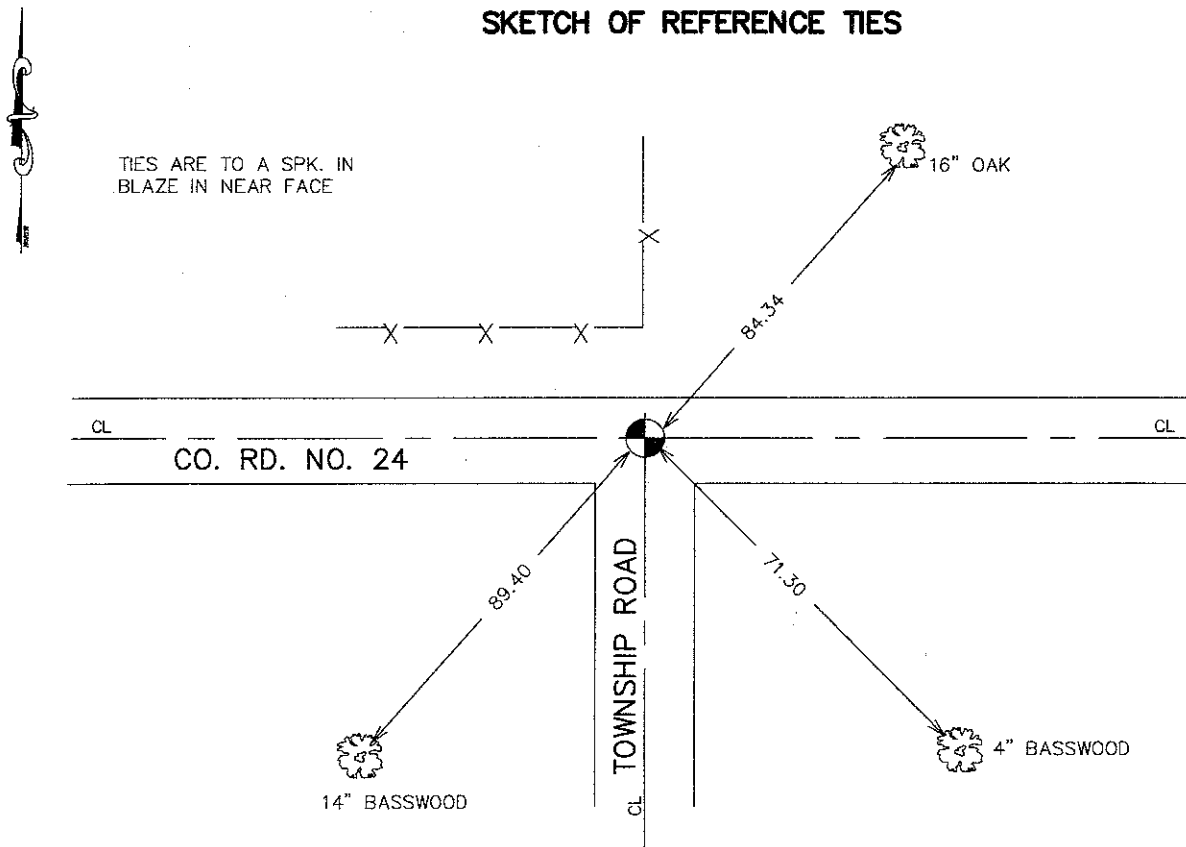
Northing= 212967.19

Easting= 412903.45

Note: NAD 1983, HARN 1996 Adjustment
coordinates are NOT compatible with
NAD 1983 coordinates

Note: 1 Meter=3937/1200 U.S. Survey Feet

SKETCH OF REFERENCE TIES



Statement of evidence relative to this corner location is on back of page.

I hereby certify that this document and the data contained herein was prepared by me or under my direct supervision.

Ernest L. Rud
Signature

11-25-2007
Date

Registration No. 9808

Land Surveyor, [] Professional Engineer

[] County Surveyor, [] County Engineer

OFFICE OF THE COUNTY RECORDER

County of _____

I hereby certify that this document was filed in the County Recorder's office at _____ M. on the

_____ day of _____ A.D., 20__

County Recorder _____

BY _____ Deputy

DOCUMENT NO. _____

NORTHEAST CORNER SECTION 16, T41, R23

STATEMENT OF EVIDENCE

IN 1975, THIS CORNER WAS LOCATED AND A CORNER CERTIFICATE WAS FILED.

THIS CORNER WAS REMOVED IN ROAD CONSTRUCTION AND WAS RESET BY THE COUNTY HIGHWAY DEPARTMENT, BUT NO NEW CERTIFICATE WAS FILED.

IN OCTOBER OF 1990, M.B. RUDE FOUND THE CAST IRON MONUMENT THAT WAS RESET BY THE COUNTY HIGHWAY DEPARTMENT AND VERIFIED ITS LOCATION AND MADE NEW REFERENCE TIES.

IN 2001 E.G. RUD AND SONS FOUND THIS MONUMENT AND ESTABLISHED KANABEC COUNTY COORDINATES ON THIS POSITION.