

# CERTIFICATE OF LOCATION OF GOVERNMENT CORNER

East quarter Corner of Section 16, Township 41, Range 23, 4th P.M.  
 STATE OF MINNESOTA, County of KANABEC

At the corner location shown on the sketch:

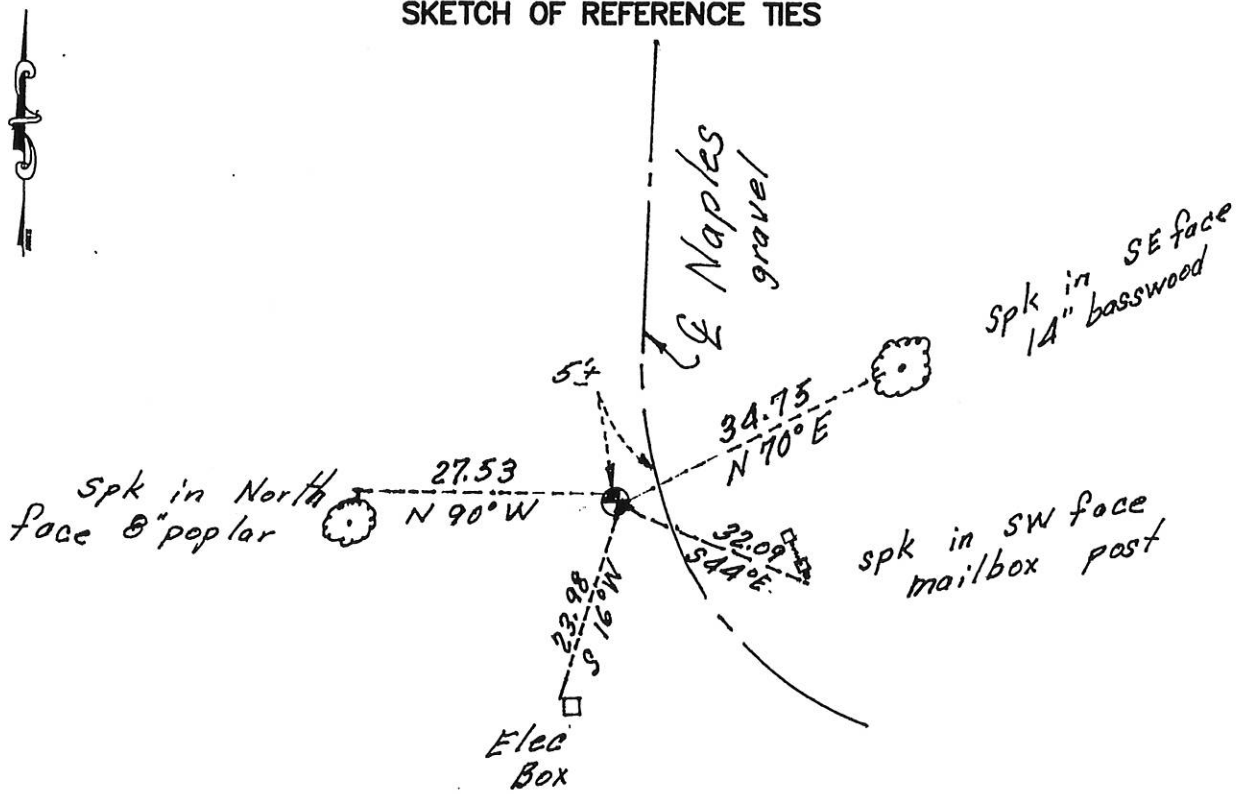
*Found a #7 rebar with aluminium cap. down 1.2 feet in gravel road.*

Kanabec County U.S. Survey Feet Coordinates  
 NAD 1983, HARN 1996 Adjustment  
 Obtained by RTK GPS Observation

Northing= 210342.86  
 Easting= 412859.60

Note: NAD 1983, HARN 1996 Adjustment coordinates are NOT compatible with NAD 1983 coordinates  
 Note: 1 Meter=3937/1200 U.S. Survey Feet

## SKETCH OF REFERENCE TIES



Statement of evidence relative to this corner location is on back of page.

I hereby certify that this document and the data contained herein was prepared by me or under my direct supervision.

*Ernest L. Rud*  
 Signature

Dec 4, 2014  
 Date

Registration No. 9808

Land Surveyor,       Professional Engineer

County Surveyor,       County Engineer

## OFFICE OF THE COUNTY RECORDER

County of \_\_\_\_\_

I hereby certify that this document was filed in the County Recorder's office at \_\_\_\_\_ M. on the \_\_\_\_\_ day of \_\_\_\_\_ A.D., 20\_\_\_\_

County Recorder \_\_\_\_\_

BY \_\_\_\_\_ Deputy

DOCUMENT NO. \_\_\_\_\_

STATEMENT OF EVIDENCE

East Quarter Corner Section 16, Township 41, Range 23

The original government post was set by a deputy surveyor John M. Gley on October 11, 1851 and two bearing trees noted as;

14" Oak bearing South 83° West at 2 Links

36" Pine bearing South 30° East at 27 Links

All of the original bearing trees are now gone.

In October of 1990, M.B. Rude made a survey around Sections 15 and 16, Township 41, Range 23, to locate the existing monuments, lines of occupation and establish search areas.

In October 1990, he set this corner on the northerly extension of a fence line south and a proportional distance between the northeast and southeast corners of Section 16, Township 41, Range 23.

On November 18, 2014, E.G. Rud & Sons found this monument down 1.2 <sup>feet</sup> ~~yards~~ in the gravel road. New ties were taken and Kanabec County Coordinates established on this position.