

CERTIFICATE OF LOCATION OF GOVERNMENT CORNER

EAST QUARTER Corner of Section 21, Township 41, Range 23, 4TH P.M.

STATE OF MINNESOTA, County of KANABEC

At the corner location shown on the sketch:

FOUND CAST ALUMINUM MONUMENT

Kanabec County U.S. Survey Feet Coordinates
NAD 1983, HARN 1996 Adjustment
Obtained by RTK GPS Observation

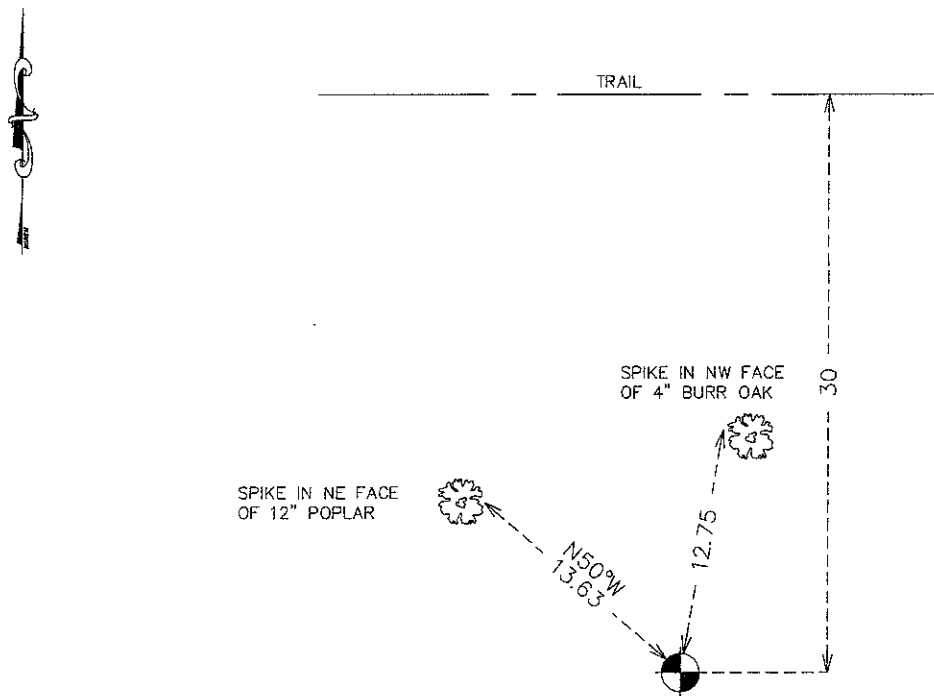
Northing= 205060.62

Easting= 412832.02

Note: NAD 1983, HARN 1996 Adjustment
coordinates are NOT compatible with
NAD 1983 coordinates

Note: 1 Meter=3937/1200 U.S. Survey Feet

SKETCH OF REFERENCE TIES



Statement of evidence relative to this corner location is on back of page.

I hereby certify that this document and the data contained herein was prepared by me or under my direct supervision.

Ernest J. Rud 7-18-2011
Signature Date

Registration No. 9808

- Land Surveyor, Professional Engineer
- County Surveyor, County Engineer

OFFICE OF THE COUNTY RECORDER

County of _____

I hereby certify that this document was filed in the County Recorder's office at _____ M. on the

_____ day of _____ A.D., 20__

County Recorder _____

BY _____ Deputy

DOCUMENT NO. _____

E1/4 CORNER, SEC. 21, T41, R23

STATEMENT OF EVIDENCE

THE ORIGINAL GOVERNMENT POST WAS SET BY A DEPUTY SURVEYOR JOHN M. GLEY ON OCT. 11, 1851 AND 2 BEARING TREES NOTED AS:

16" ASPEN @ 10 LINKS BEARING N85°E

8" BIRCH @ 13 LINKS BEARING S45°W

NO VISIBLE EVIDENCE REMAINS FOR THE POST OR BEARING TREES TODAY.

THERE ARE NO FENCE LINES OR LINES OF OCCUPATION IN THE AREA.

ON MAY 13, 1977 M.B. RUDE SET A CAST ALUMINUM MONUMENT AND STEEL FENCE POST BY SINGLE PROPORTIONAL MEASUREMENT BETWEEN THE NE AND SE CORNERS OF SEC. 21. THE CORNER FALLS 44 FEET NORTH OF AN E-W FENCE LINE. THERE ARE NO N-S LINES OF OCCUPATION.

HE CHECKED AN AERIAL PHOTO AND THE E-W FENCE LINE DOES NOT RUN ON THE QUARTER LINE.

ON APR. 19, 2011 E.G. RUD AND SONS, INC. FOUND THIS MONUMENT, TOOK NEW TIES AND KANABEC COUNTY COORDINATES WERE ESTABLISHED ON THIS POSITION.