

CERTIFICATE OF LOCATION OF GOVERNMENT CORNER

EAST QUARTER Corner of Section 28, Township 41, Range 23, 4TH P.M.
 STATE OF MINNESOTA, County of KANABEC

At the corner location shown on the sketch:
 FOUND CAST ALUMINUM MONUMENT

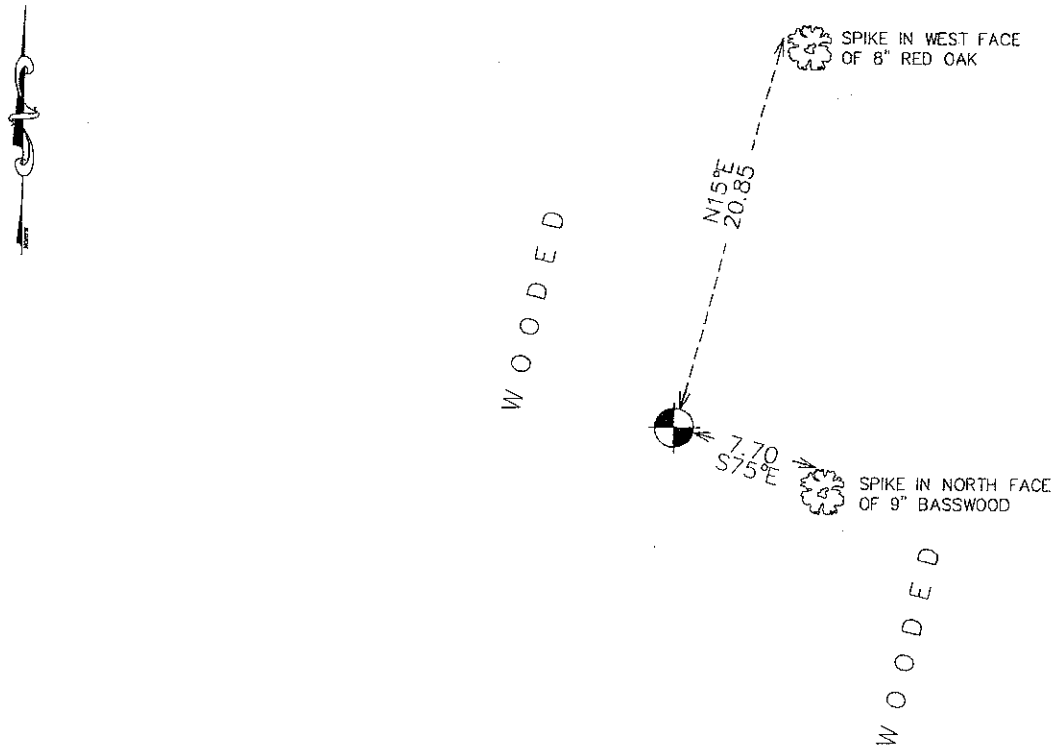
Kanabec County U.S. Survey Feet Coordinates
 NAD 1983, HARN 1996 Adjustment
 Obtained by RTK GPS Observation

Northing= 199745.69
 Easting= 412784.01

Note: NAD 1983, HARN 1996 Adjustment
 coordinates are NOT compatible with
 NAD 1983 coordinates

Note: 1 Meter=3937/1200 U.S. Survey Feet

SKETCH OF REFERENCE TIES



Statement of evidence relative to this corner location is on back of page.

I hereby certify that this document and the data contained herein was prepared by me or under my direct supervision.

Ernest Glud 7-18-2011
Signature Date

Registration No. *Ernest Glud*

Land Surveyor, Professional Engineer
 County Surveyor, County Engineer

OFFICE OF THE COUNTY RECORDER

County of _____

I hereby certify that this document was filed in the County Recorder's office at _____ M. on the _____ day of _____ A.D., 20____

County Recorder _____

BY _____ Deputy

DOCUMENT NO. _____

E1/4 CORNER, SEC. 28, T41, R23

STATEMENT OF EVIDENCE

THE ORIGINAL GOVERNMENT POST WAS SET BY A DEPUTY SURVEYOR JOHN GLEY ON OCT. 13, 1851 AND 2 BEARING TREES NOTED AS:

**5" SPRUCE @ 55 LINKS BEARING N12°E
5" SPRUCE @ 127 LINKS BEARING S63°E**

NO VISIBLE EVIDENCE REMAINS FOR THE POST OR BEARING TREES TODAY.

ON MAY 13, 1977 M.B. RUDE SET A CAST ALUMINUM MONUMENT AND STEEL FENCE POST BY SINGLE PROPORTIONAL MEASUREMENT BETWEEN THE SE AND NE CORNERS OF SEC. 28. THERE WERE NO N-S FENCE LINES OR LINES OF OCCUPATION IN THE AREA.

THERE WAS A FENCE LINE ABOUT 100 FEET SOUTH OF THIS LOCATION THAT WAS BUILT ABOUT 15 YEARS PRIOR AND HE COULD FIND NO EVIDENCE THAT THE FENCE WAS BUILT ON THE QUARTER LINE.

ON APR. 19, 2011 E.G. RUD AND SONS, INC. FOUND THIS MONUMENT IN GOOD SHAPE WITH A FENCE POST ALONGSIDE, NEW TIES WERE TAKEN AND KANABEC COUNTY COORDINATES WERE ESTABLISHED ON THIS POSITION.