

# CERTIFICATE OF LOCATION OF GOVERNMENT CORNER

NORTH QUARTER Corner of Section 34, Township 41, Range 23 4TH P.M.  
STATE OF MINNESOTA, County of KANABEC

At the corner location shown on the sketch:  
CAST ALUMINUM MONUMENT

Kanabec County U.S. Survey Feet Coordinates  
NAD 1983, HARN 1996 Adjustment  
Obtained by RTK GPS Observation

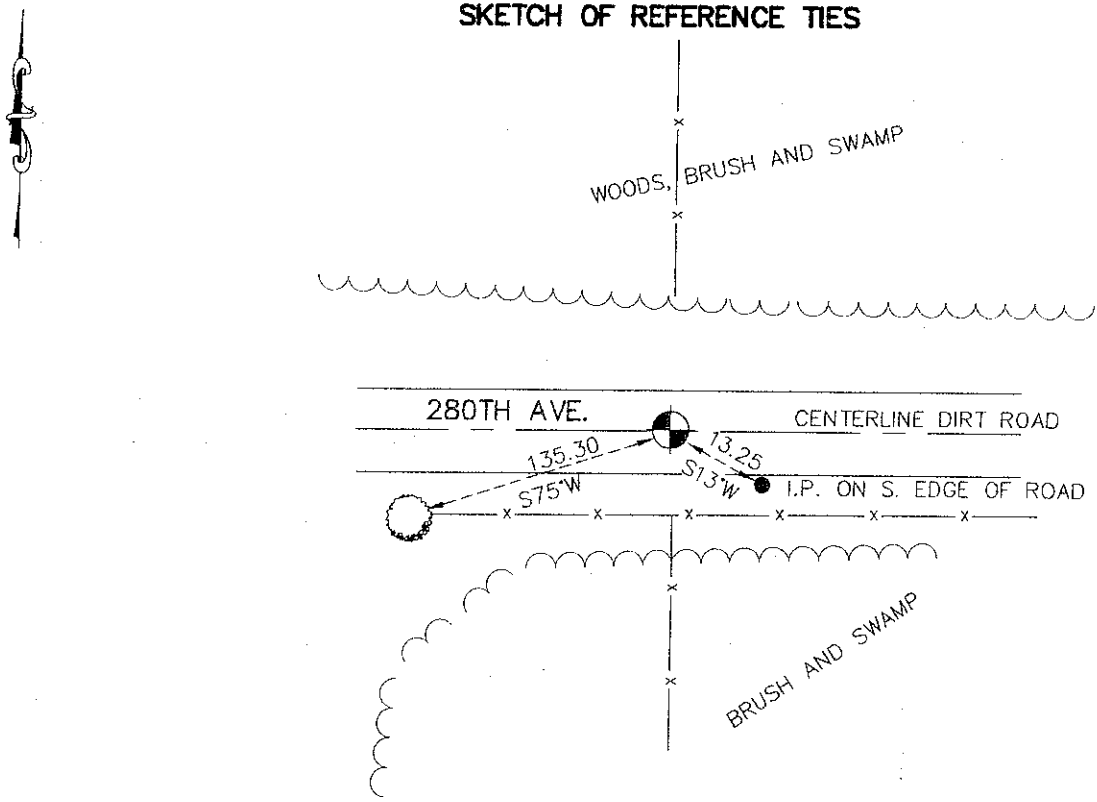
Northing= 197039.15

Easting= 415404.98

Note: NAD 1983, HARN 1996 Adjustment  
coordinates are NOT compatible with  
NAD 1983 coordinates

Note: 1 Meter=3937/1200 U.S. Survey Feet

## SKETCH OF REFERENCE TIES



Statement of evidence relative to this corner location is on back of page.

I hereby certify that this document and the data contained herein was prepared by me or under my direct supervision.

*Ernest L. Rud*  
Signature

3-17-2009  
Date

Registration No. *Minn No. 9808*

Land Surveyor, [ ] Professional Engineer

[ ] County Surveyor, [ ] County Engineer

## OFFICE OF THE COUNTY RECORDER

County of \_\_\_\_\_

I hereby certify that this document was filed in the County Recorder's office at \_\_\_\_\_ M. on the

\_\_\_\_\_ day of \_\_\_\_\_ A.D., 20 \_\_\_\_\_

County Recorder \_\_\_\_\_

BY \_\_\_\_\_ Deputy

DOCUMENT NO. \_\_\_\_\_

NORTH QUARTER CORNER SECTION 34, TOWNSHIP 41, RANGE 23,  
4TH PRINCIPAL MERIDIAN, KANABEC COUNTY, MN

**STATEMENT OF EVIDENCE**

OCT. 11, 1851 ORIGINAL CORNER WAS SET BY DEPUTY SURVEYOR JOHN GIAY AND TWO TAMARACK TREES WERE USED AS BEARING TREES.

NOV. 26, 1974 M.B. RUDE SET A CAST ALUMINUM MONUMENT IN PLACE OF A LARGE SPIKE HE FOUND ON THE CENTERLINE OF A TOWNSHIP ROAD AND FENCE LINES RUNNING NORTH AND SOUTH.

JUNE 9, 2008 E.G. RUD AND SONS FOUND THIS CAST ALUMINUM MONUMENT, TOOK NEW TIES AND ESTABLISHED KANABEC COUNTY COORDINATES USING G.P.S. EQUIPMENT.