

CERTIFICATE OF LOCATION OF GOVERNMENT CORNER

NORTHEAST Corner of Section 33, Township 41, Range 23, 4TH P.M.
 STATE OF MINNESOTA, County of KANABEC

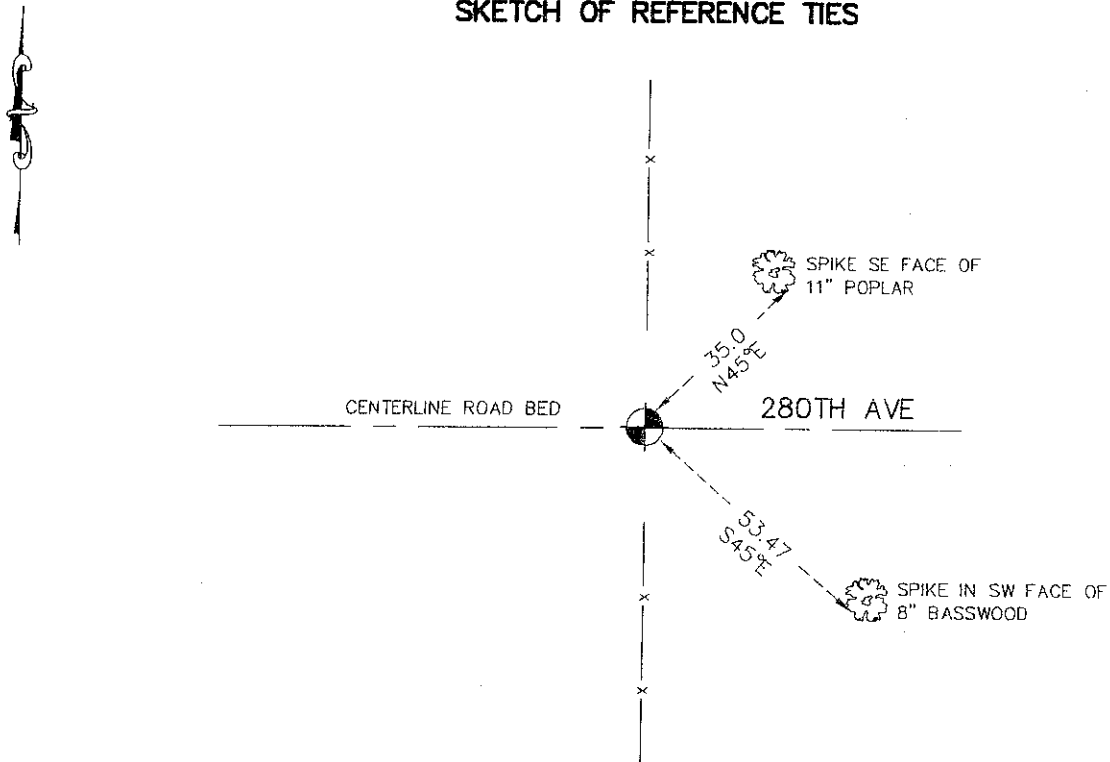
At the corner location shown on the sketch:
 CAST ALUMINUM MONUMENT WITH MAGNET ON TOP OF SANDSTONE

Kanabec County U.S. Survey Feet Coordinates
 NAD 1983, HARN 1996 Adjustment
 Obtained by RTK GPS Observation

Northing= 197087.84
 Easting= 412782.71

Note: NAD 1983, HARN 1996 Adjustment
 coordinates are NOT compatible with
 NAD 1983 coordinates
 Note: 1 Meter=3937/1200 U.S. Survey Feet

SKETCH OF REFERENCE TIES



Statement of evidence relative to this corner location is on back of page.

I hereby certify that this document and the data contained herein was prepared by me or under my direct supervision.

Ernest J. Red 3-17-2009
Signature Date

Registration No. Minn No. 9808

Land Surveyor, Professional Engineer
 County Surveyor, County Engineer

OFFICE OF THE COUNTY RECORDER

County of _____

I hereby certify that this document was filed in the County Recorder's office at _____ M. on the _____ day of _____ A.D., 20____

County Recorder _____
 BY _____ Deputy

DOCUMENT NO. _____

NORTHEAST CORNER SECTION 33, TOWNSHIP 41, RANGE 23

STATEMENT OF EVIDENCE

OCTOBER 11, 1851 ORIGINAL CORNER WAS SET BY DEPUTY SURVEYOR JOHN M. GIAY AND A BIRCH AND OAK TREE WERE ESTABLISHED AS BEARING TREES.

OCT. 4, 1974 M.B. RUDE EXCAVATED WITH A BACKHOE ON THE CENTERLINE OF A ROAD AND FENCE LINE RUNNING NORTH AND SOUTH. AT 3 FEET DOWN A SANDSTONE WITH A CHISELED "X" WAS FOUND WHICH FIT THE FENCE NORTH AND SOUTH.

JUNE 10, 2008 E.G. RUD & SONS, INC. FOUND THE CAST ALUMINUM MONUMENT, TOOK NEW TIES AND ESTABLISHED KANABEC COUNTY COORDINATES USING G.P.S. EQUIPMENT. MEASUREMENTS COMPARED WITHIN 0.2 OF A FOOT WITH M.B. RUDE.