

4123080

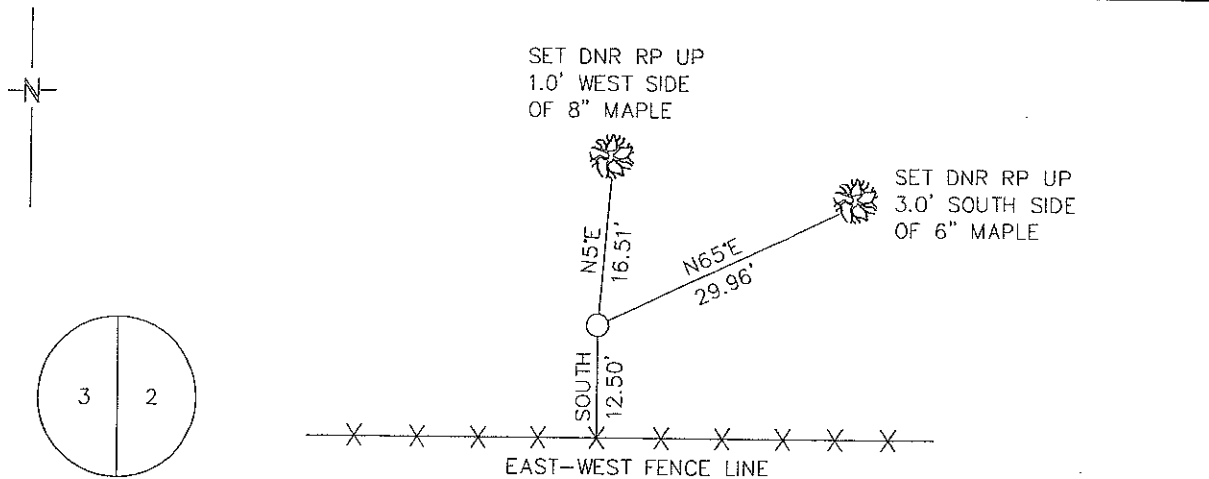
Index No. C-17

CERTIFICATE OF LOCATION OF GOVERNMENT CORNER

EAST QUARTER Corner of Section 3, Township 41N, Range 23W
4TH Principal Meridian, State of Minnesota, County of KANABEC

At the corner location shown on the sketch:

- On _____ found a _____
DATE
- left monument as found, lowered monument, removed monument (explain)
- On 12/16/2009 Placed a 3/4" X 24" REBAR WITH CAP STAMPED "MN DNR LS #16098"
DATE



KANABEC COUNTY
COORDINATE SYSTEM
NAD 83 96 ADJ.
N = 220777.665
E = 418197.850

BEARINGS OBSERVED WITH A COMPASS

Statement of evidence for this corner location is on back of this page.

2/02/2010
SFT00056

I certify that this document was researched and prepared by me or under my direct supervision.

SIGNATURE John D. Walker DATE 12/3/2010 License Number 16098

Title: Land Surveyor Professional Engineer County Surveyor County Engineer

East Quarter Corner Section 3, Township 41 North, Range 23 West

The Department of Natural Resources, Division of Lands and Minerals, contacted the following offices for information regarding this corner:

MN Secretary of State
Kanabec County Surveyor
Kanabec County Recorder's Office
Kanabec County Engineer's Office
E.G. Rud & Sons, Inc., Land Surveyors

1851 The US General Land Office field notes, on file in the Secretary of State's Office, show this corner to be marked with a post and the following bearing trees were marked:

Aspen 7" N56°W 5 links (3.3')

Aspen 8" S 80°E 5 links (3.3')

The GLO distance to the corner south was 40 chains (2640') and the distance north was 62.38 chains (4117.08').

2009 In December, the DNR survey crew searched for this corner at the computed lost position of the corner and located an east – west fence line. The fence line fell 12.5' south of the lost position. The fence runs east – west from the approximate center of section 3 to 328' east of the east quarter corner location. There is another fence corner 1371.5' west of the corner location. The fence is pretty straight, but using it would make the southeast quarter only 2598.4'. The lost position was accepted for the corner and a ¾"x24" rebar with a plastic cap stamped MN DNR LS 16098 was set to mark the corner location.

Northeast Corner Section 3 bears N00°03'22"W 4071.69'

Northeast Corner Section 11 bears S00°03'22"E 2610.89'

For more information on our survey in this area, please contact MN DNR, Division of Lands and Minerals, Survey Section, 1601 Minnesota Drive, Brainerd, MN 56401