

4123079

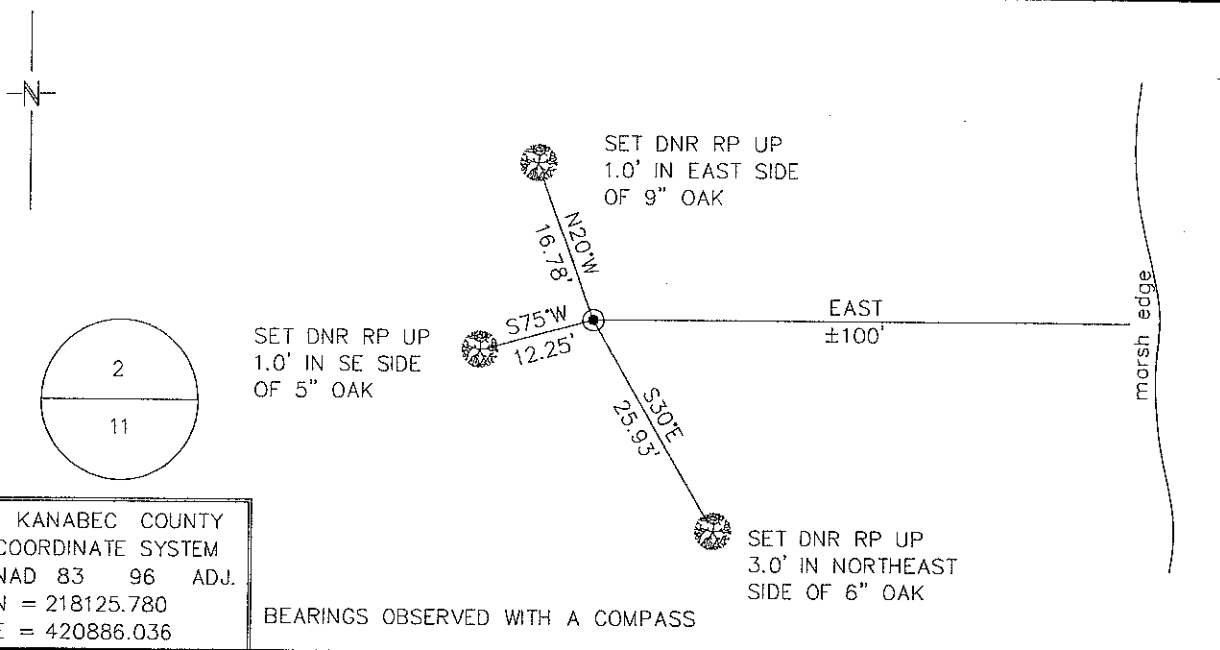
Index No. E-19

# CERTIFICATE OF LOCATION OF GOVERNMENT CORNER

NORTH QUARTER Corner of Section 11, Township 41N, Range 23W  
4TH Principal Meridian, State of Minnesota, County of KANABEC

At the corner location shown on the sketch:

- On \_\_\_\_\_ found a \_\_\_\_\_  
DATE
- left monument as found,  lowered monument,  removed monument (explain)
- On 1/12/2010 Placed a 1" X 72" INSIDE DIAMETER IRON PIPE WITH CAP  
DATE  
STAMPED "MN DNR LS 16098". UP 2.0'



Statement of evidence for this corner location is on back of this page.

2/09/2010  
SFT00056.00.00.01

I certify that this document was researched and prepared by me or under my direct supervision.

SIGNATURE John D. Walker DATE 12/3/2010 License Number 16098

Title:  Land Surveyor  Professional Engineer  County Surveyor  County Engineer

**North Quarter Corner Section 11, Township 41 North, Range 23 West**

The Department of Natural Resources, Division of Lands and Minerals, contacted the following offices for information regarding this corner:

MN Secretary of State  
Kanabec County Surveyor  
Kanabec County Recorder's Office  
Kanabec County Engineer's Office  
E.G. Rud & Sons, Inc., Land Surveyors

1851 The US General Land Office field notes, on file in the Secretary of State's Office, show this corner to be marked with a post and the following bearing trees were marked:

Balsam 8" S 35° E 10 links (6.6')  
Balsam 4" N 03° E 4 links (2.64')

2010 In January, the DNR survey crew searched for this corner at the lost position between section corners. No evidence of the original GLO bearing trees was found. The corner was established at lost position. A 1"x72" iron pipe with a plastic cap stamped with MN DNR LS 16098 on it, left, up 2', was set to mark the corner location.

Northeast Corner Section 11 bears S89°07'32"E 2685.94' (2659.47' GLO)  
Northeast Corner Section 10 bears N89°07'32"W 2685.94' (2659.47' GLO)  
The east bank of the Snake River is about 1880' westerly (1805' GLO)

For more information on our survey in this area, please contact MN DNR, Division of Lands and Minerals, Survey Section, 1601 Minnesota Drive, Brainerd, MN 56401